

Thomas Simpson

Five dances from
Opus Newer Paduanen

1617

Arranged for recorders or other instruments

by Christian Mondrup

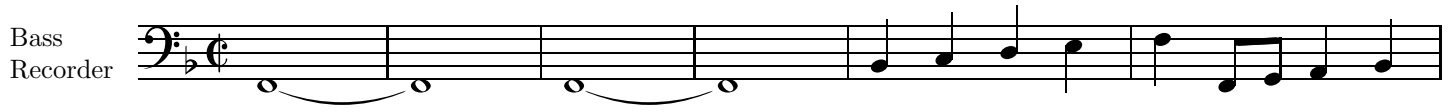
Dedicated to Århus Blokfløjtekreds

Great Bass Recorder or Bass Recorder

Paduan

Thomas Simpson
Opus newer Paduanen, 1617

Bass
Recorder



7



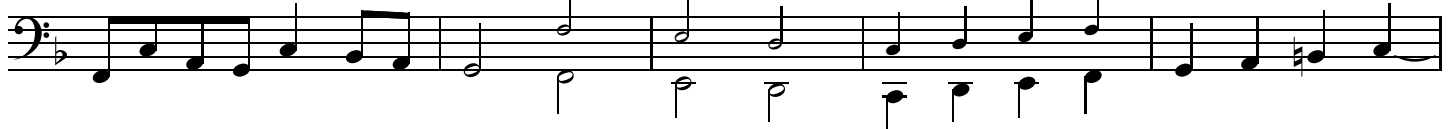
14



21



27



32



38



45



51



56



61



Intrada

Thomas Simpson
Opus newer Paduanen, 1617

Bass
Recorder



Measures 1-5 of the Intrada. The staff is in bass clef with a key signature of one flat (B-flat). The melody begins with a half rest, followed by a series of eighth and quarter notes, ending with a quarter note on B-flat.

6



Measures 6-8. Measure 6 continues the melody. Measure 7 has a first ending bracket over a quarter note on B-flat. Measure 8 has a second ending bracket over a quarter note on B-flat, followed by a repeat sign and a quarter note on B-flat.

10



Measures 10-13. Measure 10 starts with a quarter note on B-flat, followed by eighth notes. Measure 11 has a quarter note on B-flat, followed by eighth notes. Measure 12 has a quarter note on B-flat, followed by eighth notes. Measure 13 has a quarter note on B-flat, followed by eighth notes.

14



Measures 14-18. Measure 14 starts with a quarter note on B-flat, followed by eighth notes. Measure 15 has a quarter note on B-flat, followed by eighth notes. Measure 16 has a quarter note on B-flat, followed by eighth notes. Measure 17 has a quarter note on B-flat, followed by eighth notes. Measure 18 has a quarter note on B-flat, followed by eighth notes.

19



Measures 19-23. Measure 19 starts with a quarter note on B-flat, followed by eighth notes. Measure 20 has a quarter note on B-flat, followed by eighth notes. Measure 21 has a quarter note on B-flat, followed by eighth notes. Measure 22 has a quarter note on B-flat, followed by eighth notes. Measure 23 has a quarter note on B-flat, followed by eighth notes.

24

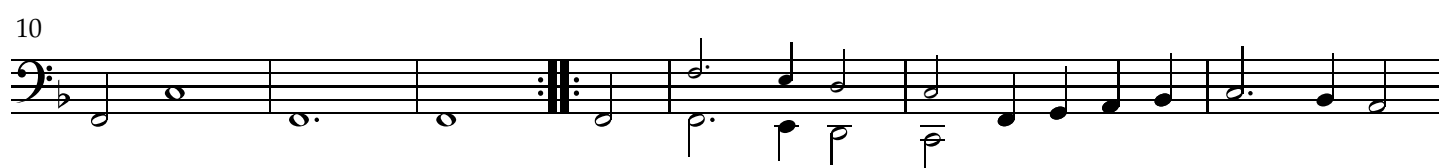


Measures 24-28. Measure 24 starts with a quarter note on B-flat, followed by eighth notes. Measure 25 has a quarter note on B-flat, followed by eighth notes. Measure 26 has a quarter note on B-flat, followed by eighth notes. Measure 27 has a quarter note on B-flat, followed by eighth notes. Measure 28 has a quarter note on B-flat, followed by eighth notes.

Courante

Thomas Simpson
Opus newer Paduanen, 1617

Bass
Recorder



Volta

Thomas Simpson
Opus newer Paduanen, 1617



Allemande

Thomas Simpson
Opus newer Paduanen, 1617

Bass
Recorder



The five dances in this collection have all been taken from “Opus Newer Paduanen” (Hamburg 1617) by Thomas Simpson (1582–c.1630), appointed to the Danish court 1622–25.

All the dances have been transposed a fourth down and some necessary octave changes have been made. The notes set with small types are to be played on a F bass recorder if no C bass is available.

Christian Mondrup
Werner Icking Music Archive
http://imslp.org/wiki/Category:WIMA_files

Thomas Simpson

Five dances from
Opus Newer Paduanen
1617

Arranged for recorders or other instruments

by Christian Mondrup

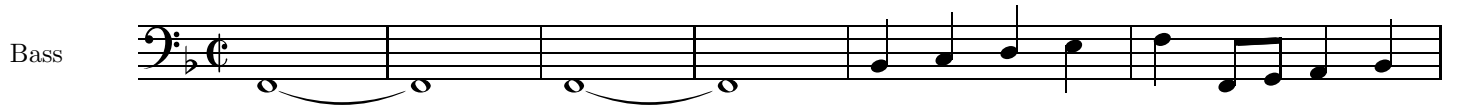
Dedicated to Århus Blokfløjtekreds

Bass Instrument

Paduan

Thomas Simpson
Opus newer Paduanen, 1617

Bass



7



14



21



27



32



38



45



51



56



61



Intrada

Thomas Simpson
Opus newer Paduanen, 1617

Bass



6



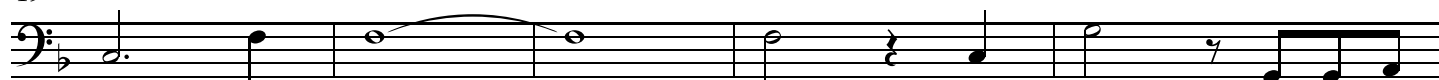
10



14



19



24



Courante

Thomas Simpson
Opus newer Paduanen, 1617

Bass



5



10



15



20



Volta

Thomas Simpson
Opus newer Paduanen, 1617

Bass



6



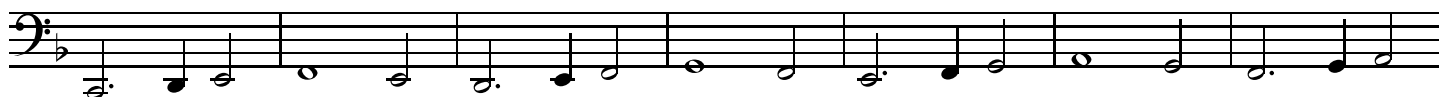
11



17



24

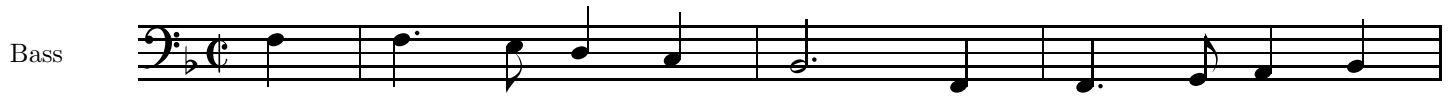


31



Allemande

Thomas Simpson
Opus newer Paduanen, 1617



The five dances in this collection have all been taken from “Opus Newer Paduanen” (Hamburg 1617) by Thomas Simpson (1582–c.1630), appointed to the Danish court 1622–25.

All the dances have been transposed a fourth down and some necessary octave changes have been made. The notes set with small types are to be played on a F bass recorder if no C bass is available.

Christian Mondrup
Werner Icking Music Archive
http://imslp.org/wiki/Category:WIMA_files