

Sopranino Recorder 1

Sonata a Sette, (SPCM No. 12)

(from Sacro-Profanus Concentus Musicus, (1662))

Johann Heinrich Schmelzer (c.1620–23 –1680)

4

8

13

17

21

24

24

51

57

13

74

81

Sopranino Recorder 2

Sonata a Sette, (SPCM No. 12)

(from Sacro-Profanus Concentus Musicus, (1662))

Johann Heinrich Schmelzer (c.1620–23 –1680)

6

11

16

20

24

20

47

52

57

11

71

77

102

107

112

117

125

Descant Recorder 2

Sonata a Sette, (SPCM No. 12)

(from Sacro-Profanus Concentus Musicus, (1662))

Johann Heinrich Schmelzer (c.1620–23 –1680)

7

11

13

4

31

36

42

47

11

62

10

76

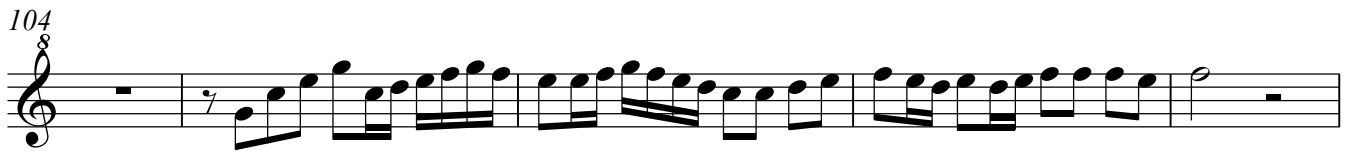
3

83

89

10

104



109



117



124

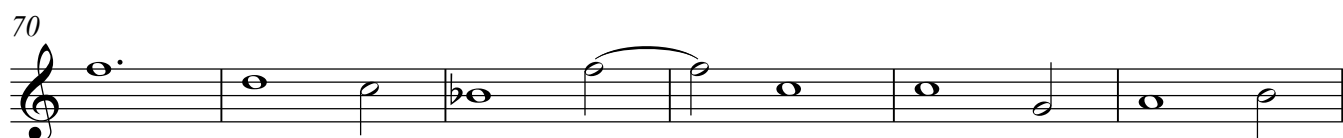
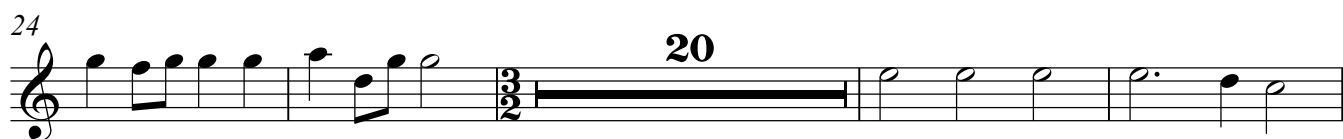
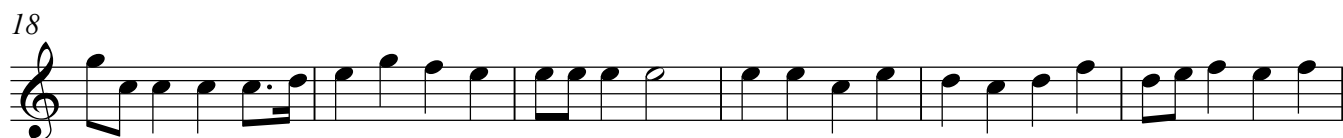


Treble Recorder

Sonata a Sette, (SPCM No. 12)

(from Sacro-Profanus Concentus Musicus, (1662))

Johann Heinrich Schmelzer (c.1620–23 –1680)

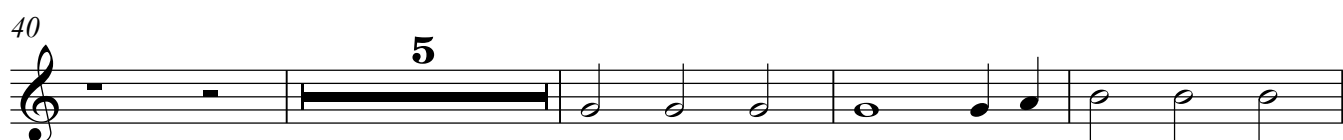


Tenor Recorder

Sonata a Sette, (SPCM No. 12)

(from Sacro-Profanus Concentus Musicus, (1662))

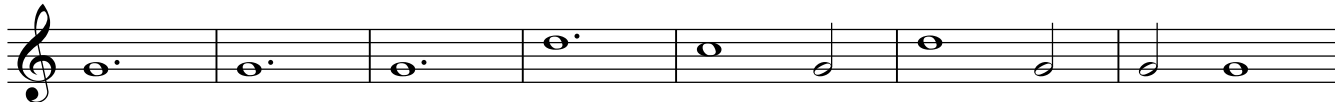
Johann Heinrich Schmelzer (c.1620–23 –1680)



74



81



88



94



99



109



115



121



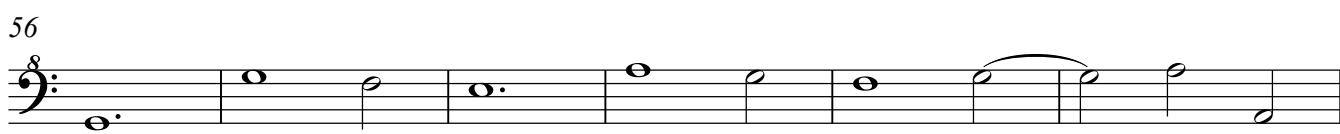
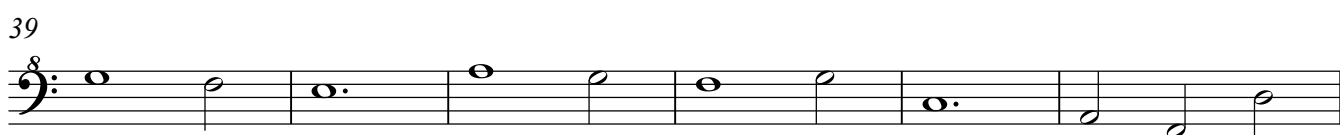
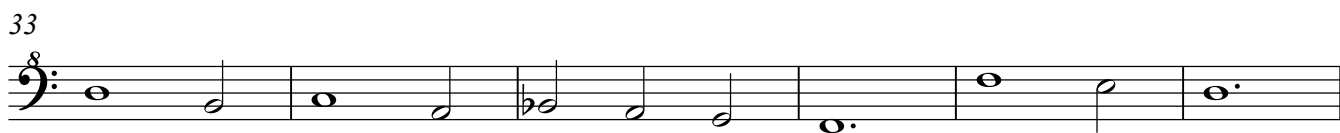
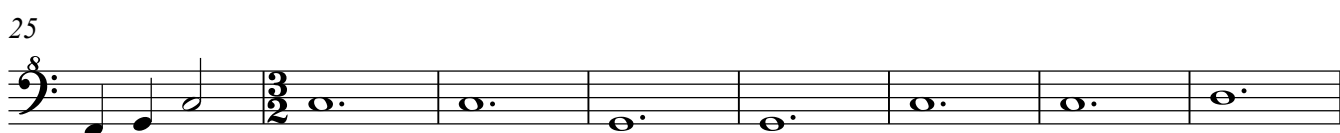
125



Sonata a Sette, (SPCM No. 12)

(from Sacro-Profanus Concentus Musicus, (1662))

Johann Heinrich Schmelzer (c.1620-23 -1680)



68



74



81



88



94



99



105



111



118



124

