

# Double Bass

## Nocturne "JASMINE"

for Solo Piano, Vibraphone & String Orchestra

Arsen Buchynsky

Lento ♩ = 66

5

*mf* *p* *sp* *sp*

5

*mf*

9

*pp* *pizz.* *p* *p*

20

*mf* *arco* *mf*

25

*pizz.* *mp*

30

*mf*

33

*arco*

# Double Bass

2

40



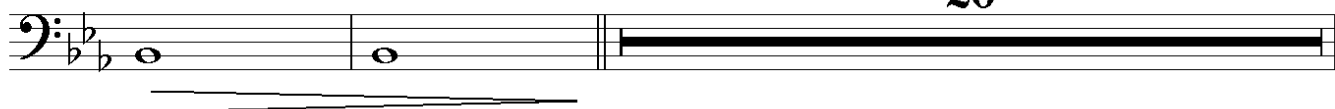
45



50

Solo Piano

20



72

rit. . . .

A tempo ♩=66

Solo Vibraphone

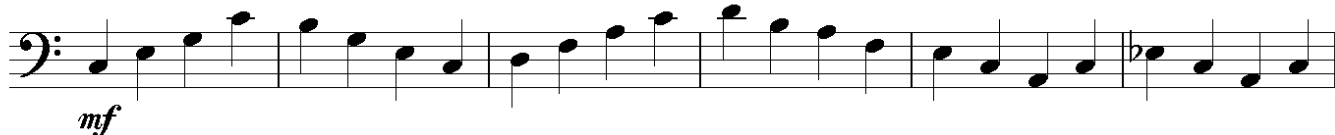
pizz.



77



81



87



91

rit. . . .



A tempo ♩=66

95 -arco

