

Viola

Fuga Prima

Giacomo Puccini
a cura di Jolando Scarpa

Preludio

Musical score for the Preludio section, measures 1 through 16. The score is written in bass clef with a key signature of one sharp (F#) and a common time signature (C). It features a melodic line with various rhythmic patterns, including eighth and sixteenth notes, and several triplet markings (indicated by a '3' above the notes). The piece concludes with a double bar line and a final chord.

Fuga

Musical score for the Fuga section, measures 17 through 72. The score is written in bass clef with a key signature of one sharp (F#) and a 3/8 time signature. It begins with a measure rest of 12 measures, followed by a complex, rhythmic fugue. The notation includes many sixteenth and thirty-second notes, often beamed together. There are several trill markings (indicated by a wavy line above a note) and a dynamic marking of *tr* (trillo). The section ends with a double bar line.

2

75



88



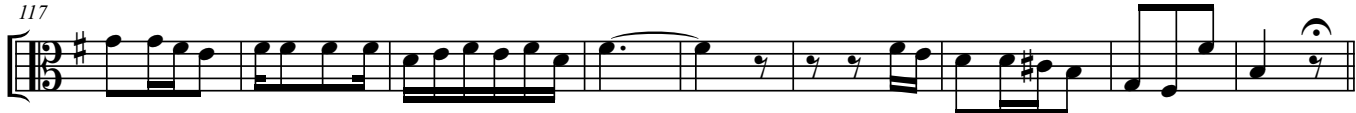
97



108



117



126



135



147



156



167

