

# In Nomine Through All Parts / In Nomine Fantasia

Great Bass Recorder

(Adapted for recorders by separating the 2 bass parts into bass and C-bass by MG. This causes In Nomines 5 and 6 to exchange parts sometimes)

$\text{♩} = 108$



7



11



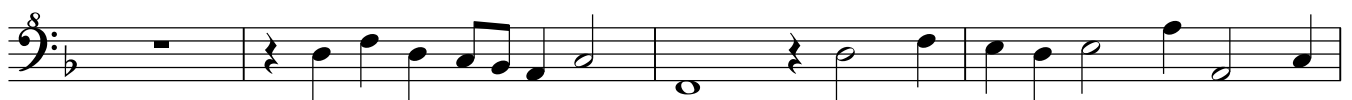
15



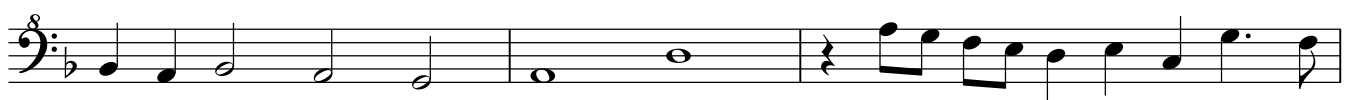
20



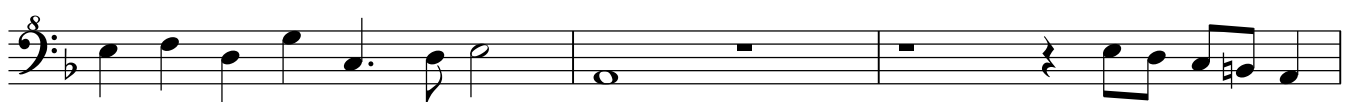
23



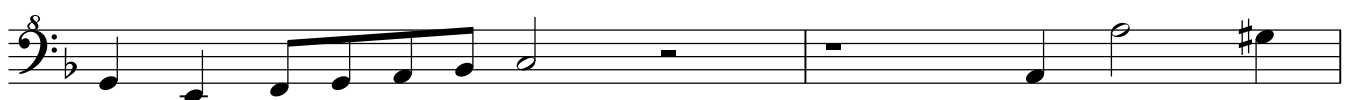
27



30



33



35



[illegible][illegible][illegible]

79



83



87



90

