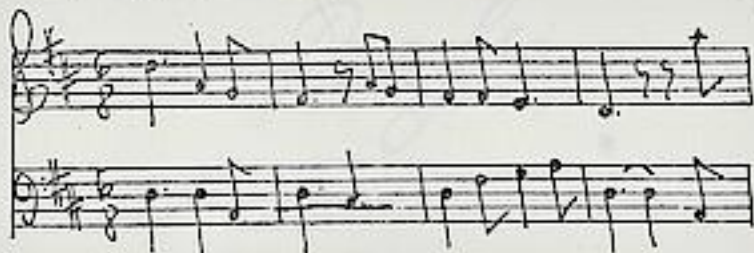


Brioschi, Antonio

BRD DS Mus.ms 121/3

Sinfonie/à/2.Violini/Viola/et/Basso/del Sig^{re} Brioski/[Incipit]/ (D-dur)



Spirituoso assai 6/8
D-dur - Largo 3/4 h-moll.
- Presto 2/4 D-dur.

Ms.ca.1750.

34 × 22,5 cm.

4 St.:vl 1,2,vla,b.

1,1,1,2 Bl.

Incipit im Titel von der Hand Graupners.

3
Mus 121/3
ms

Sinfonie
à

E. Verini
Viola
et
Basso

del Sigre Brioschi



Basso

Spiritoso $\text{E}^{\flat} \text{F}^{\sharp}$ $\frac{6}{8}$

Largo $\text{E}^{\flat} \text{F}^{\sharp}$ $\frac{3}{4}$

Presto $\text{C}\sharp$ $\frac{2}{4}$

Violino 1^{mo}

Spirituoso Assai

The image shows a page of handwritten musical notation for the first violin part. The music is written on 14 staves. The key signature is one sharp (F#), and the time signature is 3/8. The tempo and mood are indicated as "Spirituoso Assai". The notation includes a variety of note values, rests, slurs, and dynamic markings such as "p" (piano) and "t" (tutti). The paper shows signs of age, including some staining and foxing.

Largo 3/4

Presto 2/4

Handwritten musical score on aged paper, featuring two sections: *Largo* (3/4 time) and *Presto* (2/4 time). The notation is in G major and includes various note values, rests, and dynamic markings. The piece concludes with a double bar line and repeat signs.

Violino 2^{do}

Allegro

The image shows a page of handwritten musical notation for the second violin part of a piece. The music is written on 14 staves. The key signature is one sharp (F#), and the time signature is 6/8. The tempo is marked 'Allegro'. The notation includes treble clefs, various note values (eighths, sixteens, and sixteenth notes), rests, and dynamic markings such as 'p' (piano). The music is characterized by rhythmic patterns and melodic lines typical of a violin part in a classical or romantic style. The paper is aged and shows some staining.

Largo $\frac{3}{4}$ $\text{F}\sharp$

Presto $\frac{2}{4}$ $\text{F}\sharp$

Viola

Spiritoso 3# 6/8

Handwritten musical score for Viola, Spiritoso section. The score consists of ten staves of music. The key signature is three sharps (F#, C#, G#) and the time signature is 6/8. The notation includes various rhythmic values such as eighth and sixteenth notes, rests, and dynamic markings like accents and slurs. The music is written in a cursive, handwritten style.

Largo 3# 3/4

Handwritten musical score for Viola, Largo section. The score consists of three staves of music. The key signature is three sharps (F#, C#, G#) and the time signature is 3/4. The notation includes various rhythmic values such as quarter and eighth notes, rests, and dynamic markings like accents and slurs. The music is written in a cursive, handwritten style.

Presto $\text{3}\sharp$ $\frac{7}{4}$