

Tricky interval exercises for Alto recorder

Victor Eijkhout

13 numbered musical staves for Alto recorder exercises. Each staff is in treble clef and common time (C). The exercises are as follows:

- Staff 1: C major scale, ascending and descending.
- Staff 2: C major scale, ascending and descending.
- Staff 3: C major scale, ascending and descending.
- Staff 4: C major scale, ascending and descending.
- Staff 5: C major scale, ascending and descending.
- Staff 6: C major scale, ascending and descending.
- Staff 7: C major scale, ascending and descending.
- Staff 8: C major scale, ascending and descending.
- Staff 9: C major scale, ascending and descending.
- Staff 10: C major scale, ascending and descending.
- Staff 11: C major scale, ascending and descending.
- Staff 12: C major scale, ascending and descending.
- Staff 13: C major scale, ascending and descending.



27



28



29



30



31



32



33



34



35



36



37

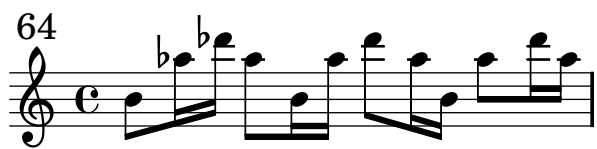
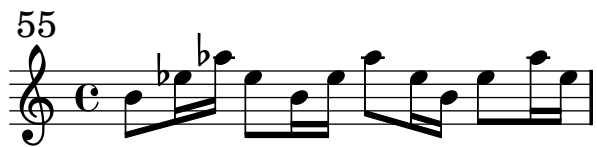
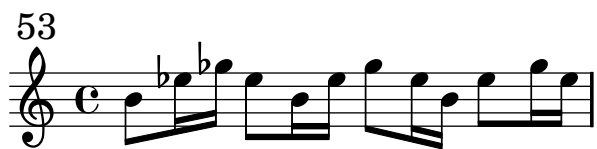


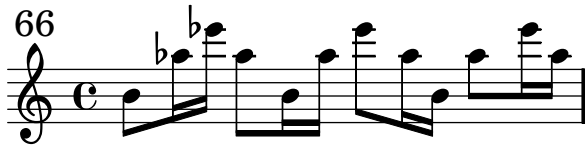
38



39















129



130



131



132



133



134



135



136



137



138



139



140



141



