

Symphony in E♭

Daniel Leo Simpson
May-August 1985
Chandler-Showlow, Arizona

Allegro ♩=112

ff *mp* *pizz.* **11**

16 *arco* *ff*

19 *mf* *f* *rit.*

23 **A** **Poco meno mosso** ♩=104

ff *mp* *f* *dim.* **2**

30 *mp* *mp* **ritardando** **2**

35 *p* *p* *pizz.* **B** **Moderato** ♩=108

40 *f* *arco* **2**

47 **accelerando** **C** **Più mosso** ♩=120

mf *f*

51

D

54

58

meno mosso ♩=112

63

67

Moderato ♩=112
pizz.

70

75

10

arco

E

89

accelerando più mosso ♩=126

94

3

101 *poco rit.* *moderato* ♩=120
f *dim.* *mp* *mp*

106 *rall.* *pizz.*
cresc. *f* *dim.*

112 **F** *moderato* ♩=96 *accel.* *arco*
9

124 **G** *Allegro* ♩=120 *accel.*
f *f*

129 **H** *più allegro* ♩=126
f

133
f

138

141 **I** *cresc.*

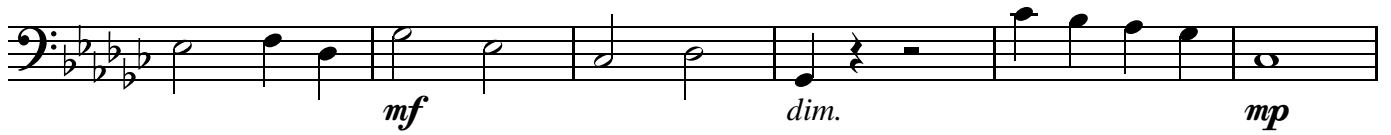
145 *ff*

149



154

ritardando



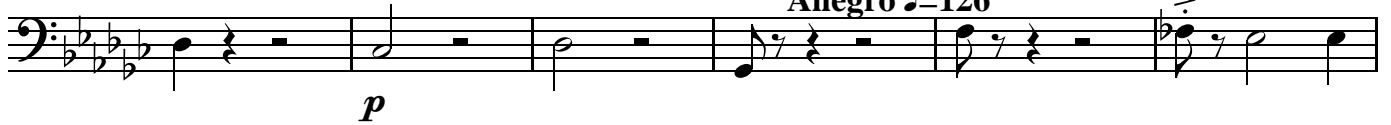
160

pizz.

arco

J

Allegro ♩=126



166

**K**

171



176

**L**

180



184



188

Musical staff for measure 188, featuring a bass clef, a key signature of two flats, and a 2/4 time signature. The staff contains a sequence of eighth and sixteenth notes, ending with a triplet of eighth notes. A '3' is written above the final triplet.

194

M

2

Musical staff for measure 194, featuring a bass clef, a key signature of two flats, and a 2/4 time signature. The staff contains a sequence of eighth and sixteenth notes. Dynamics include *mf*, *cresc.*, *f*, and *cresc.*

200

N

Musical staff for measure 200, featuring a bass clef, a key signature of two flats, and a 2/4 time signature. The staff contains a sequence of eighth and sixteenth notes. Dynamics include *ff*.

205

O

accel.

Musical staff for measure 205, featuring a bass clef, a key signature of two flats, and a 2/4 time signature. The staff contains a sequence of eighth and sixteenth notes, followed by a half note. Dynamics include *mf* and *cresc.*

210

P

Molto allegro ♩=165

Musical staff for measure 210, featuring a bass clef, a key signature of two flats, and a 2/4 time signature. The staff contains a sequence of eighth and sixteenth notes. Dynamics include *ff*.

214

Musical staff for measure 214, featuring a bass clef, a key signature of two flats, and a 2/4 time signature. The staff contains a sequence of eighth and sixteenth notes, ending with a half note.