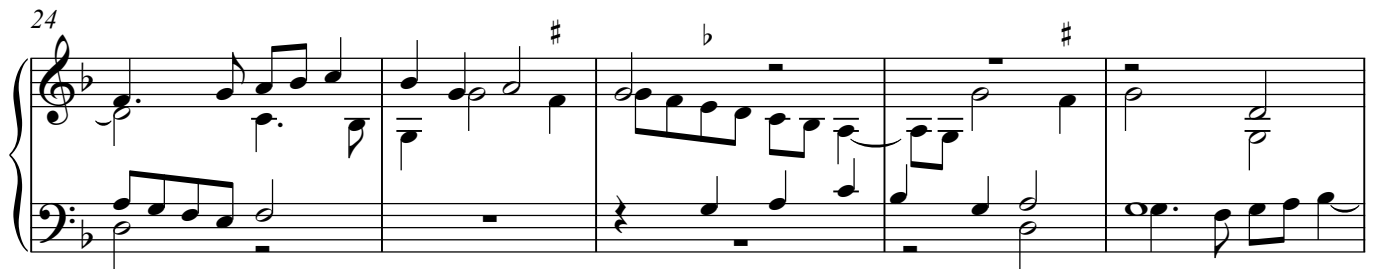
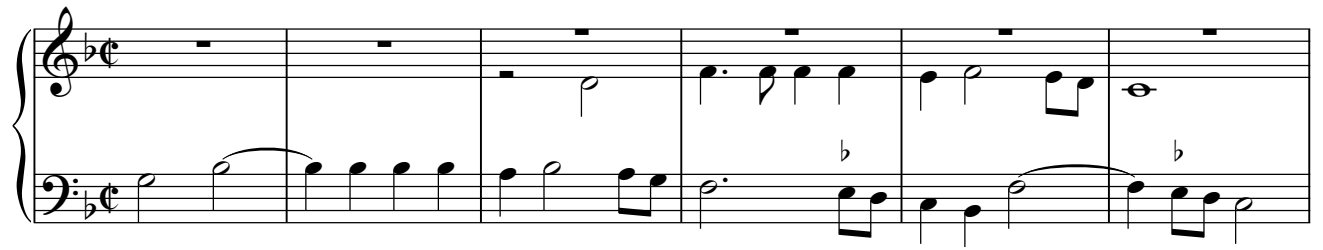


Qui belles amours

Josquin Desprez (ca 1450 - Condé sur Escaut 1521)



34

40

46

51

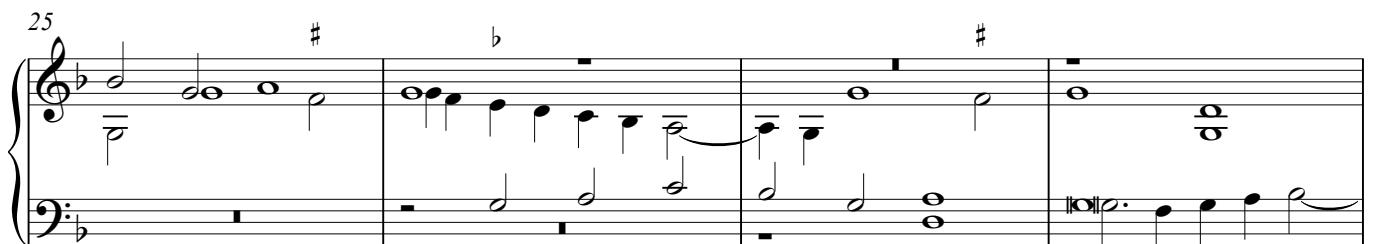
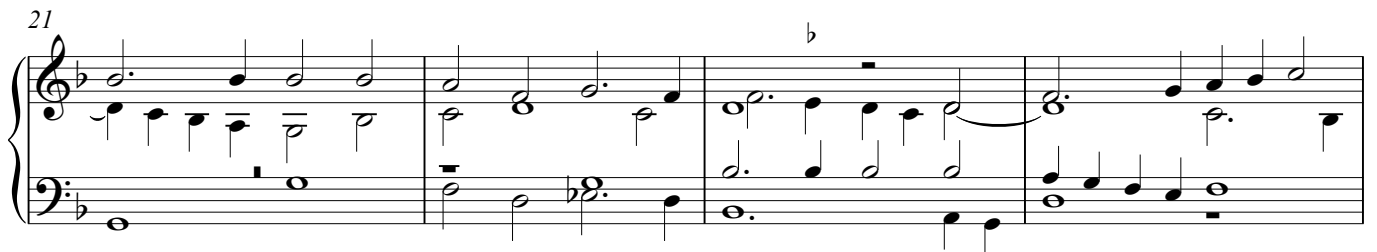
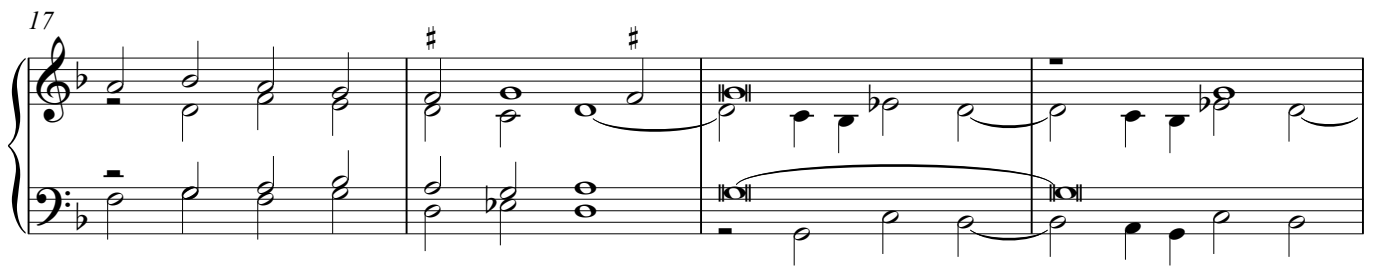
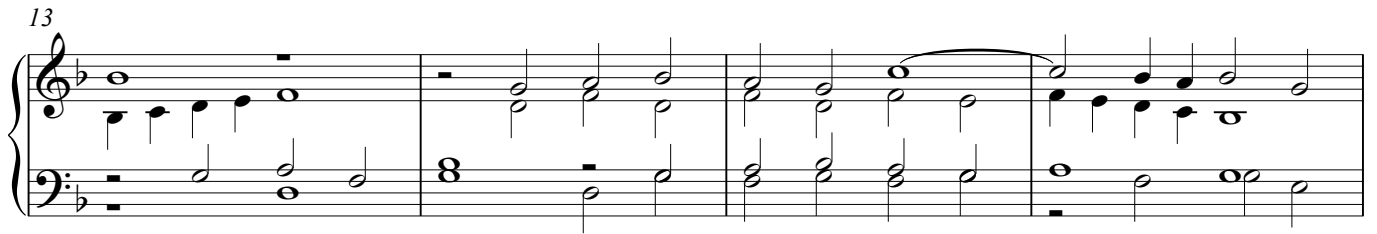
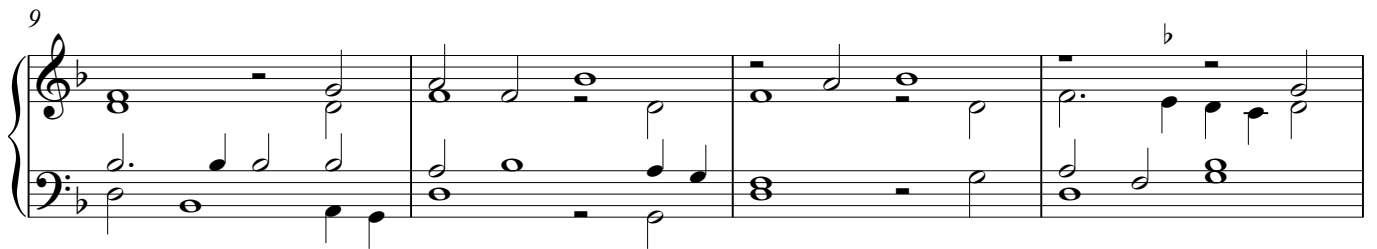
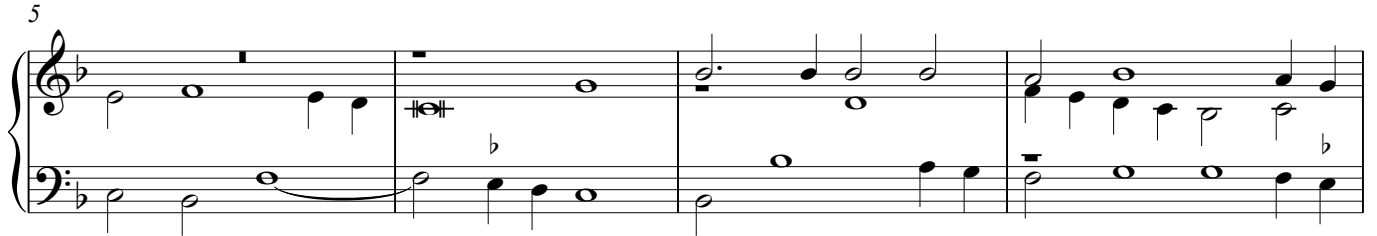
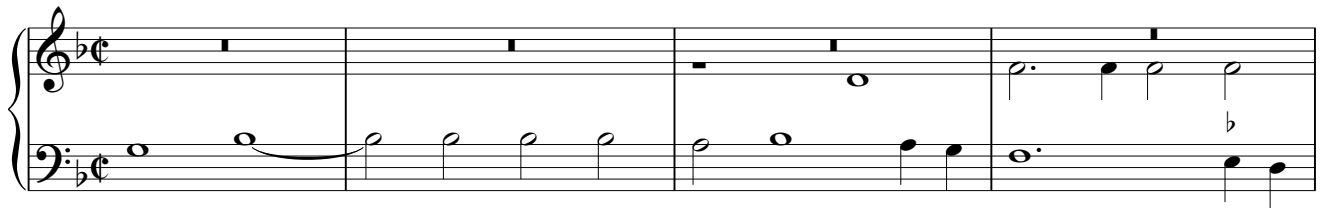
I used the edition B. Thomas, *Seven secular pieces*, London 1976. Original clefs: C1, C3, C4, F4. I doubled the note values with NJE, making them more look like the sources. In 16-th century tabulatures, however, the original note values were usually halved, so I now give the keyboard transcription in two ways.

Tabulatures usually have got bar lines.

All accidentals have been based upon two surviving lute tabulatures, and Thomas and NJE agree in the most points, but I made my own choices. Neither of the tabulatures is consistent. Bassus 16.4 and Altus 17.4 are not flattened in any source.

Qui belles amours a

Josquin Desprez - (ca 1450 - Condé sur Escaut 1521)



29

33

37

41

45

49

53