

# Sonate n°1 pour hautbois et piano, Opus 173

Cyril Plante

- 1 -

o<sup>b</sup>oe

*Moderato* 50

1

*mf*

*f*

3

3

5

*p*

*mp*

10

*f*

*p*

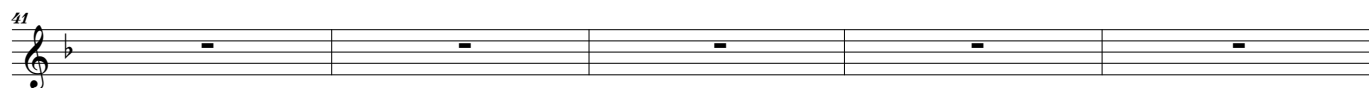
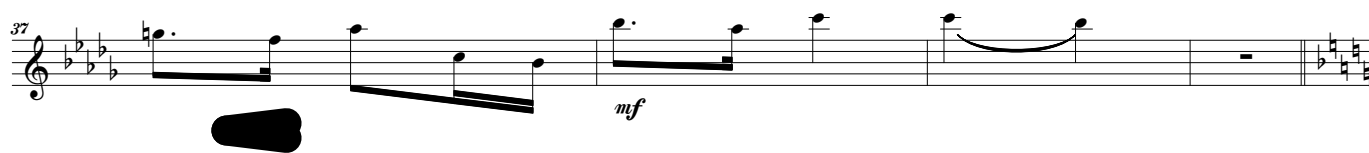
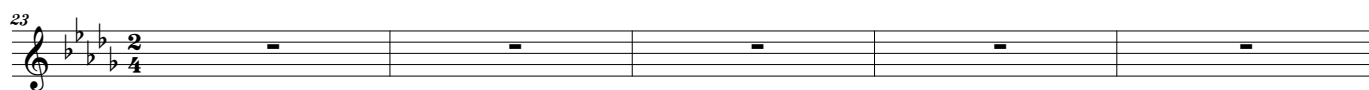
14

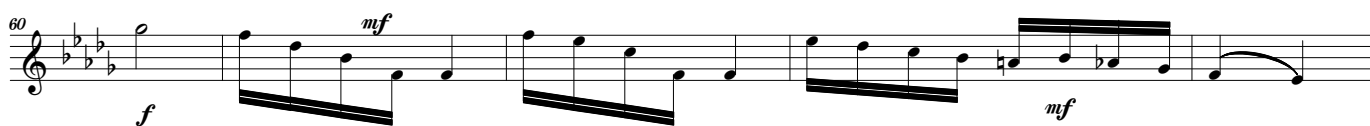
*mf*


18

*p*

Detailed description: The musical score is for an oboe part, measures 1 through 18. It is written in 2/4 time and B-flat major. The tempo is marked 'Moderato' with a metronome marking of 50. The score includes various dynamic markings: mezzo-forte (mf) at measures 1, 13, and 14; forte (f) at measures 4 and 9; piano (p) at measures 8, 12, and 18; and mezzo-piano (mp) at measure 7. Articulation includes accents (>) at measures 5 and 10, and slurs over triplets of eighth notes at measures 4 and 12. The notation includes eighth notes, quarter notes, and half notes, with some beamed sixteenth notes in measure 17.





70 

[illegible]

79  *ff* *fff* *sf*