

# RIGAUDON in D

for Trumpet & Organ

Score (01':38")

Georg Böhm (1661 - 1733)

Arr. Michel Rondeau

Vivace  $\text{♩} = 110$

Trumpet in C

Organ

This system contains the first four measures of the piece. The Trumpet in C part is written in a single staff with a treble clef, a key signature of two sharps (D major), and a common time signature. It begins with a quarter note D, followed by a half note E, and then a series of eighth notes: F, G, A, B, A, G, F, E, D. The Organ part consists of two staves (treble and bass clefs). The right hand plays chords and arpeggios, while the left hand plays a simple bass line of quarter notes: D, E, F, G, F, E, D.

C Tpt.

Org.

This system contains measures 5 through 9. The C Trumpet part starts at measure 5 with a five-measure rest, then plays a quarter note D, followed by eighth notes E, F, G, A, B, A, G, F, E, D. Trills (tr) are indicated above the eighth notes F, G, A, and B. The Organ part continues with similar accompaniment, featuring chords and arpeggios in the right hand and a bass line in the left hand.

C Tpt.

Org.

This system contains measures 10 through 14. The C Trumpet part has five-measure rests in measures 10, 11, 12, 13, and 14. The Organ part continues with its accompaniment, including a trill (tr) in the right hand in measure 13.

# RIGAUDON in D - Böhm - Score

2  
15

C Tpt.

Org.

15

tr

20

C Tpt.

Org.

20

25

C Tpt.

Org.

25

30

C Tpt.

Org.

Trio

30

tr

Trio

RIGAUDON in D - Böhm - Score

35

C Tpt.

Org.

C Tpt.

Org.

46

C Tpt.

Org.

52

C Tpt.

Org.

# RIGAUDON in D

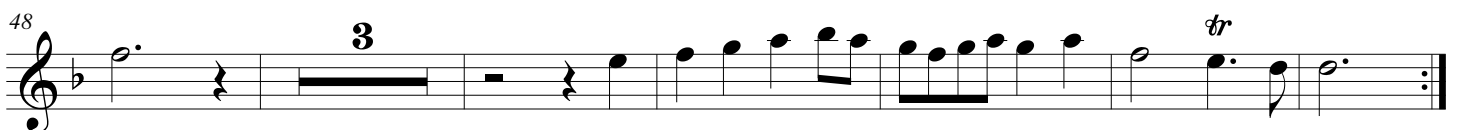
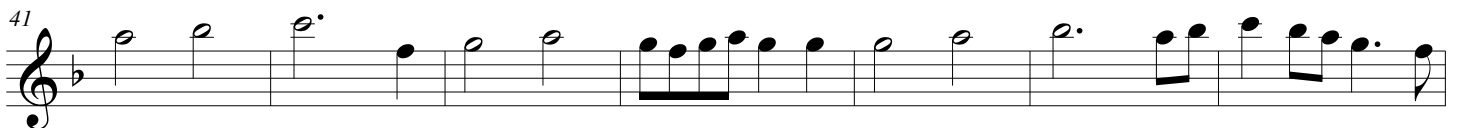
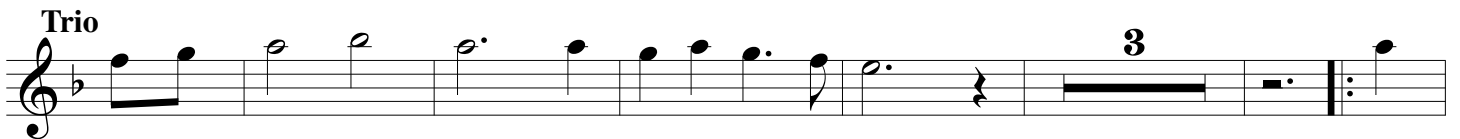
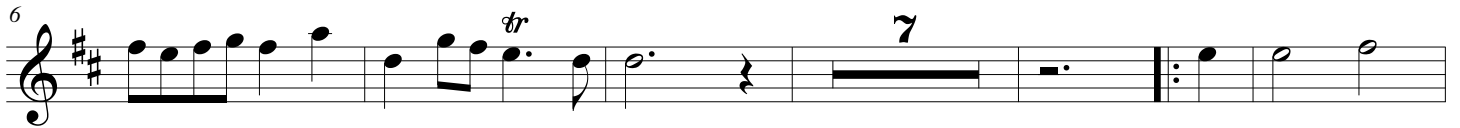
for Trumpet & Organ

## Trumpet in C

Georg Böhm (1661 - 1733)

Arr. Michel Rondeau

Vivace  $\text{♩} = 110$



# RIGAUDON in D

for Trumpet & Organ

## Trumpet in A

Georg Böhm (1661 - 1733)

Arr. Michel Rondeau

Vivace  $\text{♩} = 110$

6 *tr*

18

24 **3** *tr*

**Trio**

41 **3**

48 **3** *tr*



# RIGAUDON in D

for Trumpet & Organ

## Organ

Georg Böhm (1661 - 1733)

Arr. Michel Rondeau

Trumpet in C

Vivace  $\text{♩} = 110$

Organ

C Tpt.

5 *tr*

Org.

C Tpt.

10

10 *tr*

Org.

# RIGAUDON in D - Böhm - Organ

2  
15

C Tpt.

Org.

15

tr

20

C Tpt.

Org.

25

C Tpt.

Org.

30

C Tpt.

Org.

Trio



RIGAUDON in D - Böhm - Organ

C Tpt. <sup>35</sup>

Org. <sup>35</sup>

This system contains measures 35 to 45. The C Tpt. part begins with a melodic line of eighth notes in measure 35, followed by rests. The Organ part features a complex texture with chords in the right hand and a bass line in the left hand.

C Tpt.

Org.

This system contains measures 46 to 51. The C Tpt. part has a melodic line with a repeat sign at the beginning. The Organ part continues with its characteristic chordal accompaniment.

C Tpt. <sup>46</sup>

Org. <sup>46</sup>

This system contains measures 52 to 61. The C Tpt. part has a melodic line with a repeat sign. The Organ part features a melodic flourish in the right hand starting in measure 58.

C Tpt. <sup>52</sup>

Org. <sup>52</sup>

This system contains measures 62 to 67. The C Tpt. part has a melodic line with a trill (tr) in measure 66. The Organ part concludes with a final chord in the right hand.