

3 German Dances

Trombone

W. A. Mozart
arr. Jane Thomas

No. 1

First system (measures 1-8): Bass clef, key of D major (two sharps), 3/4 time. The melody starts with a rest, then a series of eighth and quarter notes, ending with a repeat sign. A forte (*f*) dynamic marking is present below the first measure.

Second system (measures 9-16): Bass clef, key of D major. The melody continues with eighth and quarter notes, ending with a repeat sign and the word "Fine" above the final measure. A forte (*f*) dynamic marking is present below the first measure. A measure rest of 5 is indicated above the first measure of this system.

Trio

First system (measures 17-26): Bass clef, key of D major. The melody consists of half notes and quarter notes with rests, ending with a repeat sign. A piano (*p*) dynamic marking is present below the first measure.

Second system (measures 27-34): Bass clef, key of D major. The melody continues with half notes and quarter notes, ending with a repeat sign and the instruction "D.C. al Fine" above the final measure. A forte (*f*) dynamic marking is present below the first measure, and a piano (*p*) dynamic marking is present below the 11th measure of this system.

No. 2

First system (measures 1-8): Bass clef, key of D major, 3/4 time. The melody features eighth and quarter notes, ending with a repeat sign. A forte (*f*) dynamic marking is present below the first measure.

Second system (measures 9-16): Bass clef, key of D major. The melody continues with eighth and quarter notes, ending with a repeat sign and the word "Fine" above the final measure.

Trio

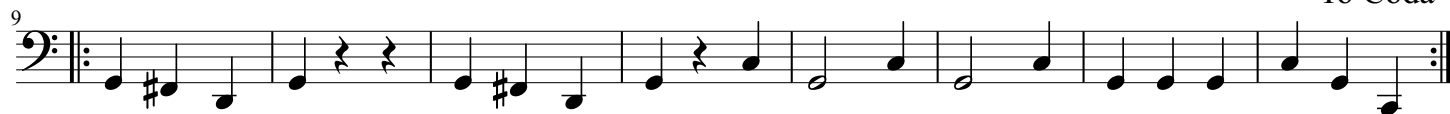
First system (measures 17-24): Bass clef, key of D major. The melody consists of half notes and quarter notes with rests, ending with a repeat sign. A piano (*p*) dynamic marking is present below the first measure.

Second system (measures 25-32): Bass clef, key of D major. The melody continues with eighth and quarter notes, ending with a repeat sign and the instruction "D.C. al Fine" above the final measure. A forte (*f*) dynamic marking is present below the first measure.

No. 3



To Coda



Trio

D.C. al Coda



Coda

