


Violoncello  
y Contrabajo

# Sinfonía No 14

en La Mayor  
K. 114

Wolfgang Amadeus Mozart  
Transcrip. Gory  
info@gory.jazztel.es

Allegro Moderato 1


I.  Musical notation for the first staff of the first movement. It begins with a forte (*f*) dynamic and a first ending bracket labeled '1' above the staff. The notation is in bass clef, key of D major, and common time.

 Musical notation for the second staff of the first movement, continuing the melodic line.


2

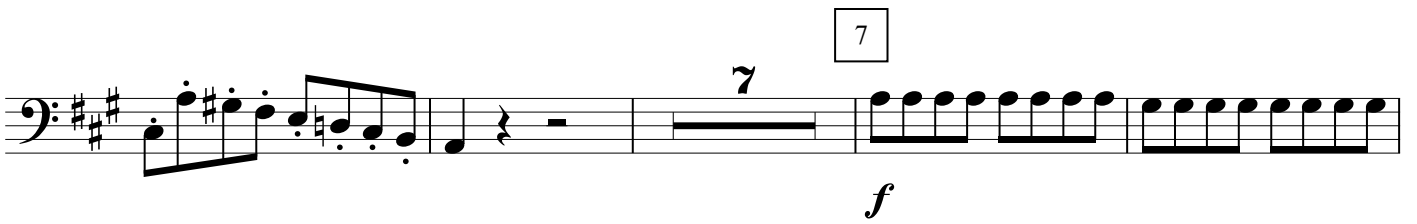
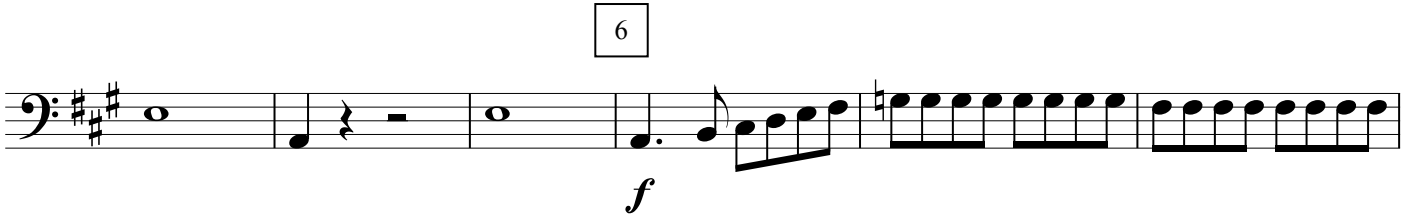
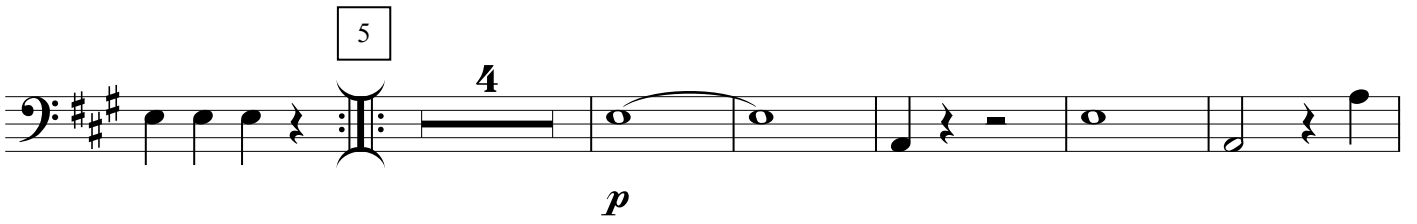
 Musical notation for the third staff of the first movement, featuring a continuous eighth-note pattern. Musical notation for the fourth staff of the first movement, showing a melodic phrase with a fermata. Musical notation for the fifth staff of the first movement, continuing the melodic development.

3

 Musical notation for the sixth staff of the first movement, featuring a melodic phrase with a fermata. Musical notation for the seventh staff of the first movement, starting with a piano (*p*) dynamic. It features a melodic phrase with a fermata.

4

 Musical notation for the eighth staff of the first movement, ending with a forte (*f*) dynamic. It features a melodic phrase with a fermata.

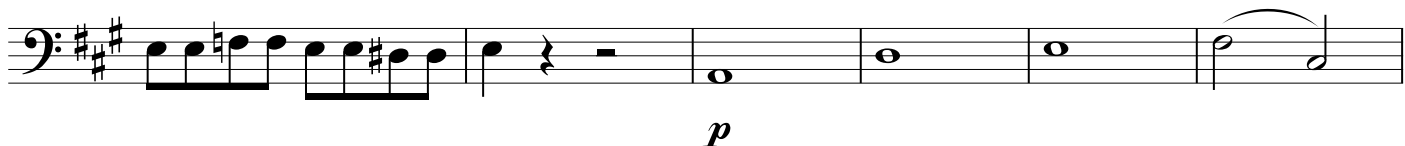




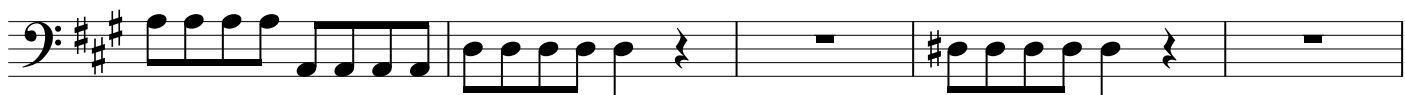
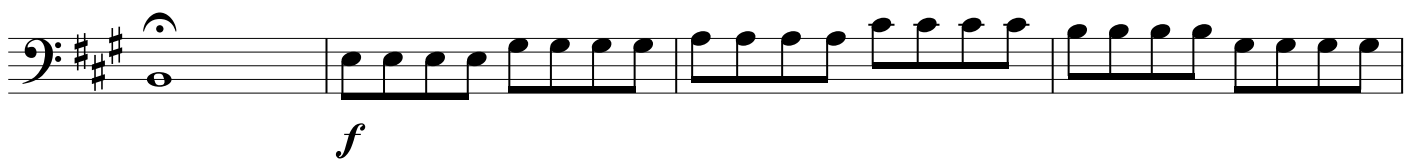
8



9




10




## Andante

II.  **3**  
*(p)*




**1**  
 **f**

 **p f p** **1.**

**2.** **2**  
 **p**

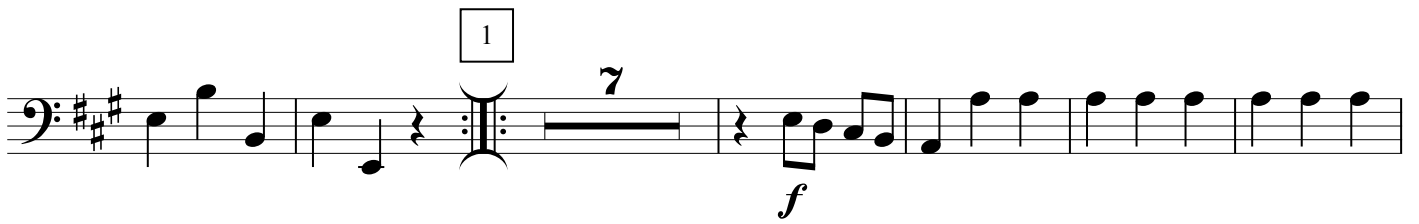


 **2**

**3**  
 **f p**



### MENUETTO



### 2 Trio



### Allegro Molto



