

Francesco Bendusi

Opera nova de balli

à quattro

Edited by Allen Garvin

Cantus

Hawthorne Early Music

FB-1

20130704

©2013 — Allen Garvin  
Some rights reserved

Hawthorne Early Music Publications, Dallas, TX

This work is licensed under the Creative Commons Attribution-ShareAlike 3.0 US License. To view a copy of this license, visit <http://creativecommons.org/licenses/by-sa/3.0/us> or send a letter to Creative Commons, 444 Castro Street, Suite 900, Mountain View, California, 94041, USA.

The typeface used is Liberation Serif, licensed under the GNU General Public License. This document was typeset using XeLaTeX and Lilypond.

10 09 08 07 06 05 04 03 02 01      19 18 17 16 15 14 13

### Pass'e mezo ditto il romano

Musical score for 'Pass'e mezo ditto il romano' in C major, 2/4 time. The score consists of three staves. The first staff begins with a treble clef and a common time signature. The melody is written in a simple, rhythmic style. Measure numbers 5, 10, and 15 are indicated at the end of the first, second, and third staves respectively. The piece concludes with a double bar line.

### Moschetta

Musical score for 'Moschetta' in C major, 2/4 time. The score consists of four staves. The melody is characterized by frequent accidentals (sharps and naturals) and a more complex rhythmic pattern. Measure numbers 5, 10, 15, and 20 are indicated at the end of the first, second, third, and fourth staves respectively. The piece concludes with a double bar line.

### Desiderata

Musical score for 'Desiderata' in C major, 2/4 time. The score consists of three staves. The melody is similar in style to the previous pieces, with a clear rhythmic structure. Measure numbers 5, 10, and 15 are indicated at the end of the first, second, and third staves respectively. The piece concludes with a double bar line.

### Pietoso

Musical score for 'Pietoso' in G major, 4/4 time. The score consists of three staves. The first staff begins with a whole rest followed by a series of eighth and quarter notes. Measure numbers 5, 10, and 15 are indicated above the staves. The piece concludes with a double bar line.

### Speranza

Musical score for 'Speranza' in G major, 4/4 time. The score consists of four staves. The first staff begins with a whole rest followed by a series of quarter notes. Measure numbers 5, 10, 15, and 20 are indicated above the staves. The piece concludes with a double bar line.

### La mala vecchie

Musical score for 'La mala vecchie' in G major, 4/4 time. The score consists of two staves. The first staff begins with a whole rest followed by a series of quarter notes. Measure numbers 5 and 10 are indicated above the staves. The piece concludes with a double bar line.



## Il stocco

Musical notation for the second system, titled "Il stocco". It features a treble clef, a key signature of one sharp (F#), and a 6/2 time signature. The melody consists of eighth and quarter notes. Measure numbers 5, 10, 15, 20, 25, and 30 are indicated above the staff.

## Doi stanchi

Musical notation for the third system, titled "Doi stanchi". It features a treble clef, a key signature of one sharp (F#), and a 6/2 time signature. The melody consists of eighth and quarter notes. Measure numbers 5, 10, 15, 20, and 25 are indicated above the staff.

## La falilela



5



10



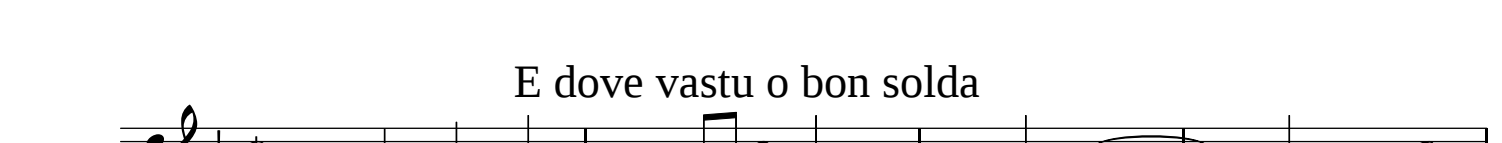
## La bruna



5



10



## E dove vastu o bon solda



5



## Chi non ha martello



10

15

20

6/2

#

### Incognito

5

10

15

20

#

# 25

### Bella foresta

5

10

15

20

6/2

#

## Galante



Musical score for Galante, consisting of three staves. The first staff begins with a treble clef, a common time signature, and a key signature of one sharp (F#). The melody starts with a whole rest, followed by quarter notes, eighth notes, and a dotted quarter note. Measure numbers 5, 10, and 15 are indicated above the staff. A 6/2 time signature change is shown above the final measure of the third staff.

## Fusta



Musical score for Fusta, consisting of three staves. The first staff begins with a treble clef, a common time signature, and a key signature of one sharp (F#). The melody starts with a whole rest, followed by quarter notes and eighth notes. Measure numbers 5, 10, and 15 are indicated above the staff. A 6/2 time signature change is shown above the final measure of the third staff. A sharp sign (#) is placed above the first measure of the third staff.

## Animoso



Musical score for Animoso, consisting of four staves. The first staff begins with a treble clef, a common time signature, and a key signature of one sharp (F#). The melody starts with a whole rest, followed by quarter notes and eighth notes. Measure numbers 5, 10, 15, and 20 are indicated above the staff. A 6/2 time signature change is shown above the final measure of the fourth staff. Sharp signs (#) are placed above the first measure of the second, third, and fourth staves.



### Cortesa padoana

Musical score for 'Cortesa padoana' in 3/4 time. The score consists of three staves. The first staff begins with a treble clef, a key signature of one sharp (F#), and a 3/4 time signature. It contains measures 1 through 7, with a measure rest in the first measure. A finger number '5' is written above the fifth measure. The second staff contains measures 8 through 13, with a measure rest in the eighth measure and a finger number '10' above the tenth measure. The third staff contains measures 14 through 19, with a measure rest in the fourteenth measure, a sharp sign above the fifteenth measure, and a double bar line at the end.

### Bandera

Musical score for 'Bandera' in 6/8 time. The score consists of three staves. The first staff begins with a treble clef, a key signature of one sharp (F#), and a 6/8 time signature. It contains measures 1 through 4, with a measure rest in the first measure. The second staff contains measures 5 through 10, with a measure rest in the fifth measure and a finger number '5' above the first measure. The third staff contains measures 11 through 15, with a measure rest in the eleventh measure, a sharp sign above the thirteenth measure, and a triplet of eighth notes in the twelfth measure. The fourth staff contains measures 16 through 20, with a measure rest in the sixteenth measure, a sharp sign above the eighteenth measure, a triplet of eighth notes in the seventeenth measure, and a 6/2 time signature above the nineteenth measure. The score ends with a double bar line.

### Gioia

Musical score for 'Gioia' in 6/8 time. The score consists of three staves. The first staff begins with a treble clef, a key signature of one sharp (F#), and a 6/8 time signature. It contains measures 1 through 5, with a measure rest in the first measure and a finger number '5' above the fifth measure. The second staff contains measures 6 through 10, with a measure rest in the sixth measure and a finger number '10' above the tenth measure. The third staff contains measures 11 through 15, with a measure rest in the eleventh measure, a sharp sign above the thirteenth measure, a 6/2 time signature above the fourteenth measure, and a sharp sign above the fifteenth measure. The score ends with a double bar line.

## La giovenetta

Musical score for 'La giovenetta' in G major, 2/4 time. The score consists of four staves of music. The first staff begins with a treble clef, a key signature of one sharp (F#), and a common time signature (C). The melody starts with a quarter rest, followed by a series of quarter and eighth notes. Measure numbers 5, 10, 15, and 20 are indicated above the staves. The piece concludes with a double bar line.

## Il ben ti vegna

Musical score for 'Il ben ti vegna' in G major, 2/4 time. The score consists of five staves of music. The first staff begins with a treble clef, a key signature of one sharp (F#), and a common time signature (C). The melody starts with a quarter rest, followed by a series of quarter and eighth notes. Measure numbers 5, 10, 15, 20, and 25 are indicated above the staves. The piece concludes with a double bar line.

## Pass'e mezo ditto il compasso

Musical score for 'Pass'e mezo ditto il compasso' in G major, 2/4 time. The score consists of three staves of music. The first staff begins with a treble clef, a key signature of one sharp (F#), and a common time signature (C). The melody starts with a quarter rest, followed by a series of quarter and eighth notes. Measure numbers 5, 10, and 15 are indicated above the staves. The piece concludes with a double bar line.

# Violla

5

10

6  
2