

Francesco Bendusi

Opera nova de balli

à quattro

Edited by Allen Garvin

Altus
(alto clef)

Hawthorne Early Music

FB-1

20130704

©2013 — Allen Garvin
Some rights reserved

Hawthorne Early Music Publications, Dallas, TX

This work is licensed under the Creative Commons Attribution-ShareAlike 3.0 US License. To view a copy of this license, visit <http://creativecommons.org/licenses/by-sa/3.0/us> or send a letter to Creative Commons, 444 Castro Street, Suite 900, Mountain View, California, 94041, USA.

The typeface used is Liberation Serif, licensed under the GNU General Public License. This document was typeset using XeLaTeX and Lilypond.

10 09 08 07 06 05 04 03 02 01 19 18 17 16 15 14 13

Pass'e mezo ditto il romano

Musical score for 'Pass'e mezo ditto il romano' in 3/4 time. The score consists of three staves. The first staff begins with a treble clef, a key signature of one sharp (F#), and a common time signature (C). The music is written in a style characteristic of the early 16th-century Italian madrigal. Measure numbers 5, 10, and 15 are indicated above the staves. The piece concludes with a double bar line and a sharp sign on the final staff.

Moschetta

Musical score for 'Moschetta' in 3/4 time. The score consists of three staves. The first staff begins with a treble clef, a key signature of one sharp (F#), and a common time signature (C). The music is written in a style characteristic of the early 16th-century Italian madrigal. Measure numbers 5, 10, 15, and 20 are indicated above the staves. The piece concludes with a double bar line and a sharp sign on the final staff.

Desiderata

Musical score for 'Desiderata' in 3/4 time. The score consists of three staves. The first staff begins with a treble clef, a key signature of one sharp (F#), and a common time signature (C). The music is written in a style characteristic of the early 16th-century Italian madrigal. Measure numbers 5, 10, and 15 are indicated above the staves. The piece concludes with a double bar line and a sharp sign on the final staff.

Pietoso

Musical score for 'Pietoso' in C major, 3/4 time. The score consists of three staves. The first staff begins with a treble clef and a common time signature. The melody is marked with measure numbers 5, 10, and 15. The second staff continues the melody from measure 10. The third staff continues from measure 15 and ends with a double bar line and a sharp sign on the final note.

Speranza

Musical score for 'Speranza' in C major, 3/4 time. The score consists of three staves. The first staff begins with a treble clef and a common time signature. The melody is marked with measure numbers 5, 10, and 15. The second staff continues the melody from measure 10. The third staff continues from measure 15 and ends with a double bar line and a sharp sign on the final note.

La mala vecchie

Musical score for 'La mala vecchie' in C major, 3/4 time. The score consists of two staves. The first staff begins with a treble clef and a common time signature. The melody is marked with measure numbers 5 and 10. The second staff continues the melody from measure 10 and ends with a double bar line.

15 6/2

Il stocco

5

10

15

20

25 6/2 30

Doi stanchi

5

10

15

20 6/2

La falilela

Musical score for 'La falilela' in 3/8 time, starting with a treble clef and a key signature of one flat. The score consists of three staves. The first staff contains measures 1 through 5, with a '5' above the final measure. The second staff contains measures 6 through 10, with a '10' above the final measure. The third staff contains measures 11 through 15, with a '15' above the first measure and a '6/2' time signature change above the final measure. The piece concludes with a double bar line.

La bruna

Musical score for 'La bruna' in 3/8 time, starting with a treble clef and a key signature of one flat. The score consists of three staves. The first staff contains measures 1 through 5, with a '5' above the final measure. The second staff contains measures 6 through 10, with a '10' above the final measure. The third staff contains measures 11 through 15, with a '6/2' time signature change above the first measure and a '15' above the final measure. The piece concludes with a double bar line.

E dove vastu o bon solda

Musical score for 'E dove vastu o bon solda' in 3/8 time, starting with a treble clef and a key signature of one flat. The score consists of three staves. The first staff contains measures 1 through 5, with a '5' above the final measure. The second staff contains measures 6 through 10, with a '10' above the final measure. The third staff contains measures 11 through 15, with a '15' above the first measure and a '6/2' time signature change above the final measure. The piece concludes with a double bar line.

Chi non ha martello

Musical score for 'Chi non ha martello' in 3/8 time, starting with a treble clef and a key signature of one flat. The score consists of one staff containing measures 1 through 5, with a '5' above the final measure. The piece concludes with a double bar line.

Musical score for the first section of "Opera nova de balli (altus)". The score is written in bass clef with a key signature of one flat (B-flat) and a common time signature (C). It consists of three staves of music. The first staff ends at measure 10. The second staff ends at measure 15. The third staff ends at measure 20, which concludes with a double bar line and a sharp sign (#).

Incognito

Musical score for the section "Incognito". The score is written in bass clef with a key signature of one flat (B-flat) and a common time signature (C). It consists of four staves of music. The first staff ends at measure 5. The second staff ends at measure 10. The third staff ends at measure 15. The fourth staff ends at measure 25, which concludes with a double bar line.

Bella foresta

Musical score for the section "Bella foresta". The score is written in bass clef with a key signature of one flat (B-flat) and a common time signature (C). It consists of four staves of music. The first staff ends at measure 5. The second staff ends at measure 10. The third staff ends at measure 15. The fourth staff ends at measure 20, which concludes with a double bar line.

Galante

Musical score for 'Galante' in 3/8 time. The score consists of three staves. The first staff begins with a treble clef, a key signature of one flat (B-flat), and a common time signature (C). The melody starts with a dotted quarter note, followed by eighth notes. A measure rest of 5 is indicated above the staff. The second staff continues the melody, with a measure rest of 10 indicated above. The third staff concludes the piece, with a measure rest of 15 indicated above and a 6/2 time signature change at the end.

Fusta

Musical score for 'Fusta' in 3/8 time. The score consists of three staves. The first staff begins with a treble clef, a key signature of one flat (B-flat), and a common time signature (C). The melody features a series of eighth notes and quarter notes, with a sharp sign (#) above a note. A measure rest of 5 is indicated above. The second staff continues the melody, with a measure rest of 10 indicated above. The third staff concludes the piece, with a measure rest of 15 indicated above and a 6/2 time signature change at the end.

Animoso

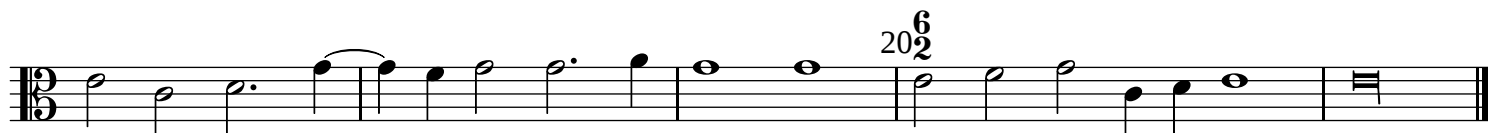
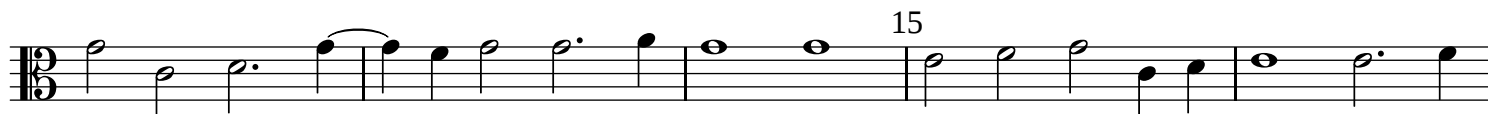
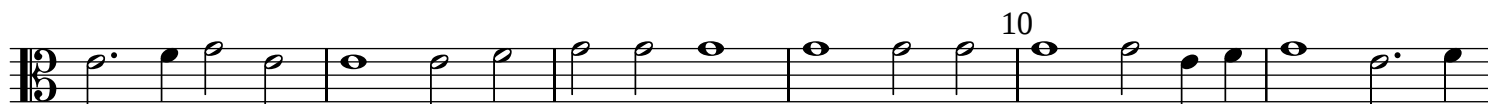
Musical score for 'Animoso' in 3/8 time. The score consists of three staves. The first staff begins with a treble clef, a key signature of one flat (B-flat), and a common time signature (C). The melody consists of eighth and quarter notes. A measure rest of 5 is indicated above. The second staff continues the melody, with a measure rest of 10 indicated above. The third staff concludes the piece, with a measure rest of 15 indicated above.



Cortesa padoana



Bandera



Gioia



La giovenetta

Musical score for 'La giovenetta' in 3/8 time, key of B-flat major. The score consists of four staves. The first staff begins with a treble clef and a key signature of one flat. The melody is marked with measure numbers 5, 10, and 15. A sharp sign (#) appears above the staff at measure 10. The second staff continues the melody, with measure numbers 15 and 20. A sharp sign (#) appears above the staff at measure 15. The third staff continues the melody, with measure numbers 20 and 25. A sharp sign (#) appears above the staff at measure 20. The fourth staff concludes the piece with a double bar line and repeat dots.

Il ben ti vegna

Musical score for 'Il ben ti vegna' in 3/8 time, key of B major. The score consists of five staves. The first staff begins with a treble clef and a key signature of two sharps. The melody is marked with measure numbers 5, 10, 15, 20, and 25. A sharp sign (#) appears above the staff at measure 5. The second staff continues the melody, with measure numbers 10 and 15. A sharp sign (#) appears above the staff at measure 10. The third staff continues the melody, with measure numbers 15 and 20. A sharp sign (#) appears above the staff at measure 15. The fourth staff continues the melody, with measure numbers 20 and 25. A sharp sign (#) appears above the staff at measure 20. The fifth staff concludes the piece with a double bar line and repeat dots.

Pass'e mezo ditto il compasso

Musical score for 'Pass'e mezo ditto il compasso' in 3/8 time, key of B major. The score consists of two staves. The first staff begins with a treble clef and a key signature of two sharps. The melody is marked with measure numbers 5 and 10. A sharp sign (#) appears above the staff at measure 5. The second staff continues the melody, with measure numbers 10 and 15. A sharp sign (#) appears above the staff at measure 10. The piece concludes with a double bar line and repeat dots.

Musical staff for Altus. The staff is in bass clef with a key signature of one sharp (F#). It contains a sequence of notes: quarter notes G2, A2, B2, C3, D3, E3, F3, G3, A3, B3, C4, D4, E4, F4, G4, A4, B4, C5, followed by a double bar line. A measure number '15' is positioned above the final measure.

Violla

Musical staff for Viola. The staff is in bass clef with a key signature of one sharp (F#). It contains a sequence of notes: quarter notes G2, A2, B2, C3, D3, E3, F3, G3, A3, B3, C4, D4, E4, F4, G4, A4, B4, C5, followed by a double bar line. A measure number '5' is positioned above the final measure.

Musical staff for Bass. The staff is in bass clef with a key signature of one sharp (F#). It contains a sequence of notes: quarter notes G2, A2, B2, C3, D3, E3, F3, G3, A3, B3, C4, D4, E4, F4, G4, A4, B4, C5, followed by a double bar line. Measure numbers '10' and '6' are positioned above the staff. A '2' is positioned below the staff under the measure number '6'.