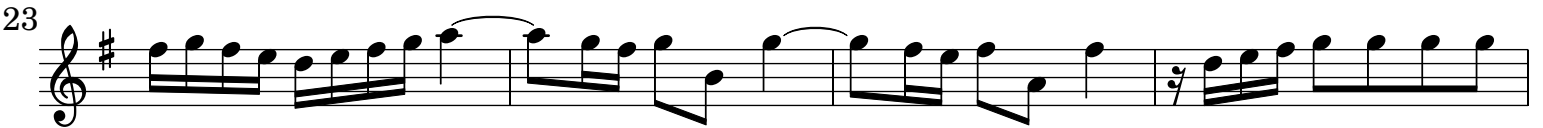
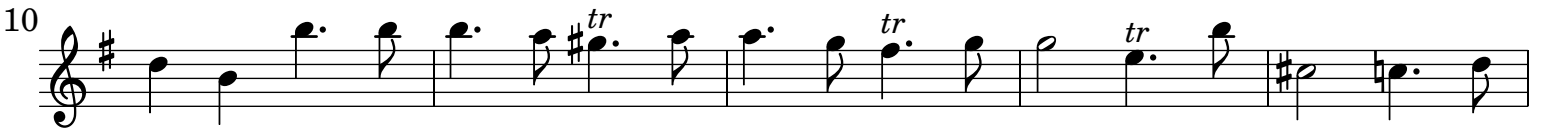


Suite La Bizarre [TWV 55:G2]

Dessus Premier

G. Ph. Telemann (1681-1767)

[1.] Ouverture - La Bizarre



Musical score for Dessus Premier, measures 43-82. The score is written in treble clef with a key signature of one sharp (F#). The music features a variety of rhythmic patterns, including eighth and sixteenth notes, and rests. Trills (tr) are indicated above several notes. The piece concludes with a first ending (1.) and a second ending (2.) leading to a repeat sign.

Measures 43-46: Continuous eighth-note patterns.

Measures 47-50: Eighth-note patterns with some sixteenth-note runs.

Measures 51-54: Eighth-note patterns with rests and grace notes.

Measures 55-58: Eighth-note patterns with sixteenth-note runs.

Measures 59-62: Eighth-note patterns with sixteenth-note runs.

Measures 63-65: Eighth-note patterns with sixteenth-note runs.

Measures 66-69: Eighth-note patterns with sixteenth-note runs.

Measures 70-73: Eighth-note patterns with trills (tr) and sixteenth-note runs.

Measures 74-77: Eighth-note patterns with trills (tr) and sixteenth-note runs.

Measures 78-81: Eighth-note patterns with trills (tr) and sixteenth-note runs.

Measures 82: Eighth-note patterns with trills (tr) and a first ending (1.) leading to a second ending (2.) and a repeat sign.

[2.] Courante

4

12

16

20

24

[3.] Gavotte en Rondeau

6

12

18

24

30

36

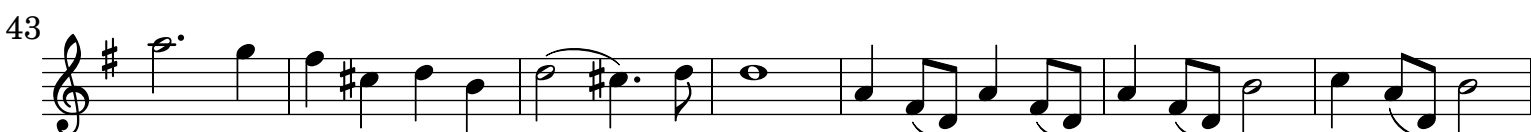
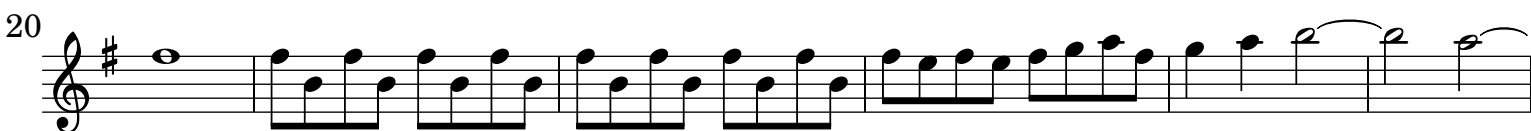
[4.] Branle

Musical score for [4.] Branle, featuring four staves of music in G major and 3/4 time. The piece includes various rhythmic patterns, trills (tr.), and repeat signs.

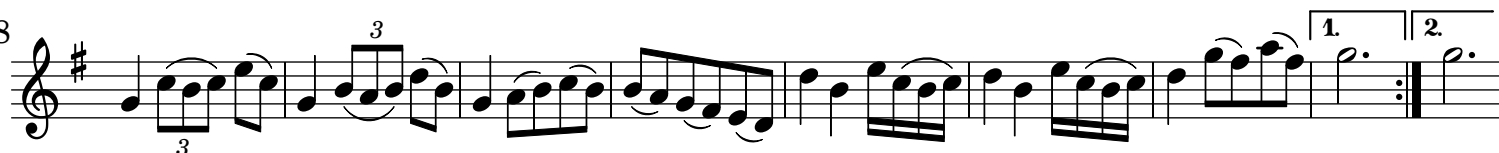
[5.] Sarabande

Musical score for [5.] Sarabande, featuring four staves of music in G major and 3/4 time. The piece includes a trill (tr.), a triplet (3), and repeat signs.

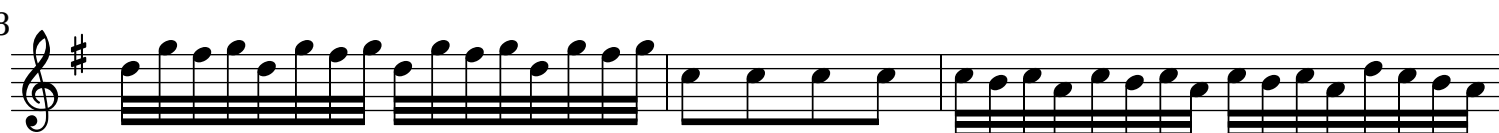
[6.] Fantasie



[7.] Menuet 1



[8.] Rossignol



12

15

18

21

24

26

30

33

37

41

44