

Suite La Bizarre [TWV 55:G2]

Dessus Second

G. Ph. Telemann (1681-1767)

[1.] Ouverture - La Bizarre



Musical score for Dessus Second, measures 44-83. The score is written in treble clef with a key signature of one sharp (F#). The music consists of several staves of notation, including eighth and sixteenth notes, rests, and dynamic markings. The score concludes with a first ending (1) and a second ending (2).

44

48

51

55

59

63

67

70

73

77

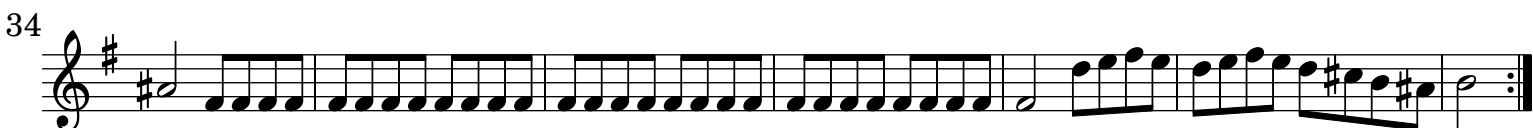
80

83

[2.] Courante



[3.] Gavotte en Rondeau



[4.] Branle

Musical score for Branle, measures 1-12. The piece is in G major (one sharp) and 4/4 time. It consists of five staves of music. The first staff begins with a treble clef, a key signature of one sharp (F#), and a 4/4 time signature. The melody is characterized by eighth and sixteenth notes, often beamed together, with some slurs. The second staff ends with a repeat sign. The third staff begins with a repeat sign. The fourth and fifth staves continue the melodic line with various rhythmic patterns and slurs.

[5.] Sarabande

Musical score for Sarabande, measures 1-13. The piece is in G major (one sharp) and 3/4 time. It consists of four staves of music. The first staff begins with a treble clef, a key signature of one sharp (F#), and a 3/4 time signature. The melody is primarily composed of quarter notes and half notes, with some rests. The second staff is marked with a '5' above the first measure. The third staff is marked with a '9' above the first measure. The fourth staff is marked with a '13' above the first measure. The piece concludes with a repeat sign.

[6.] Fantasie



[7.] Menuet 1



1.

2.



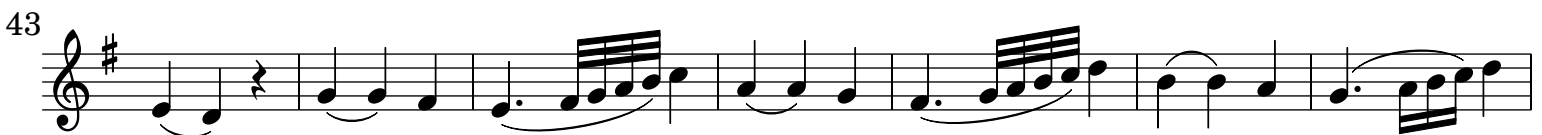
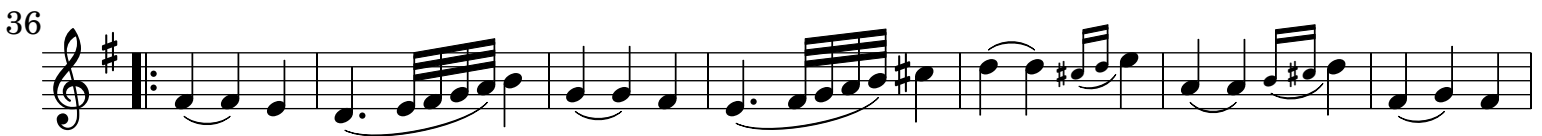
1.

2.



1.

2.



1.

2.

[8.] Rossignol



8

13

17

21

25

29

33

38

42