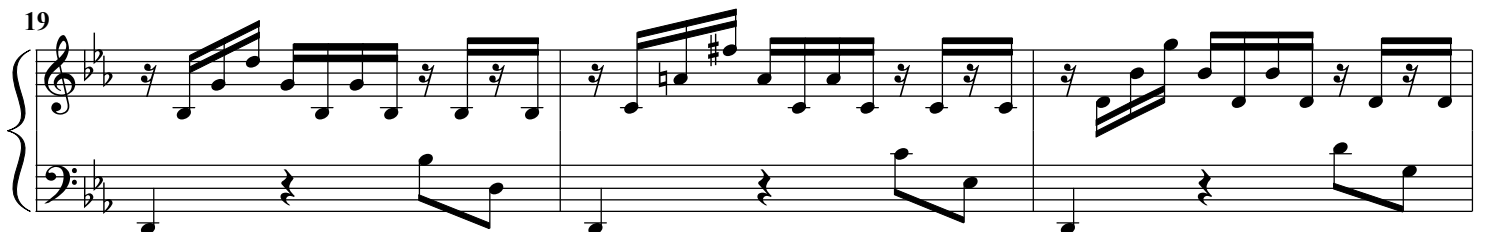
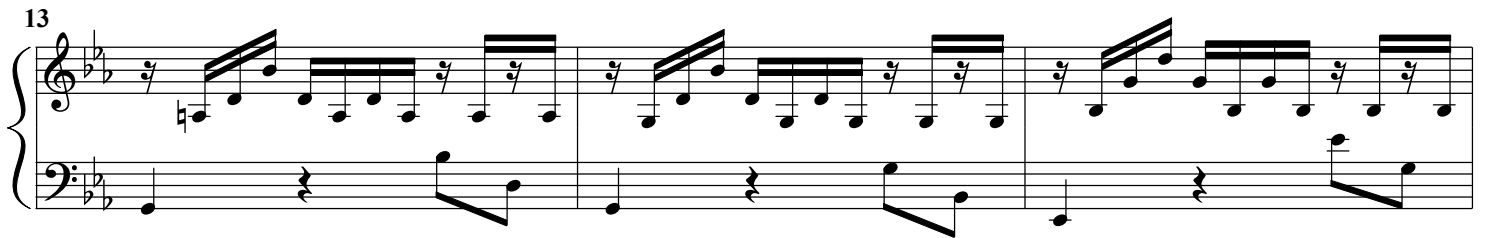
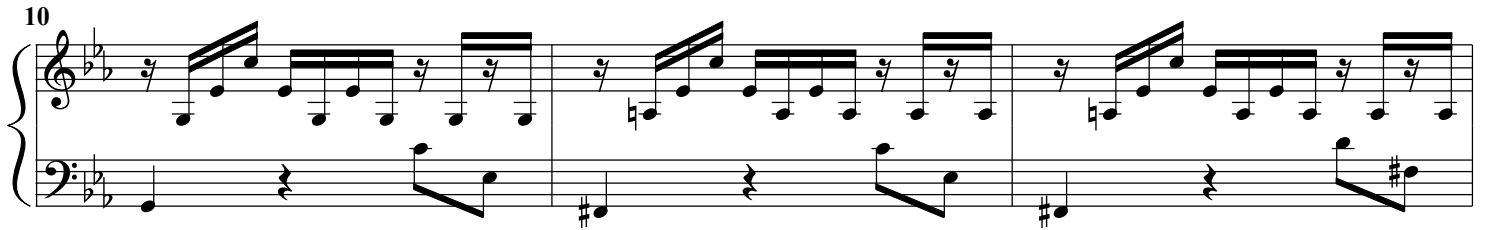
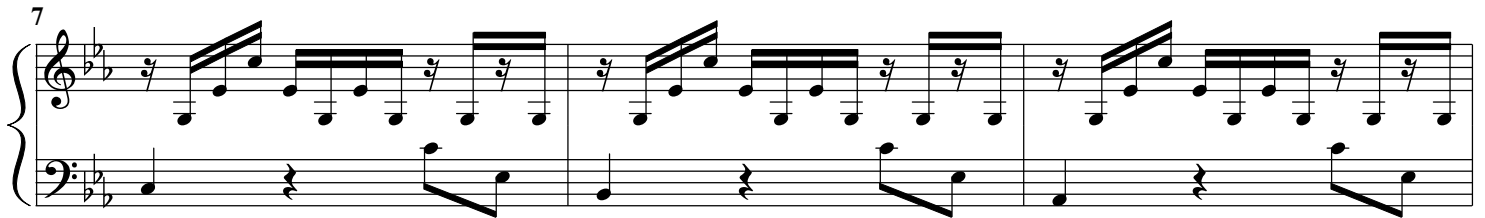
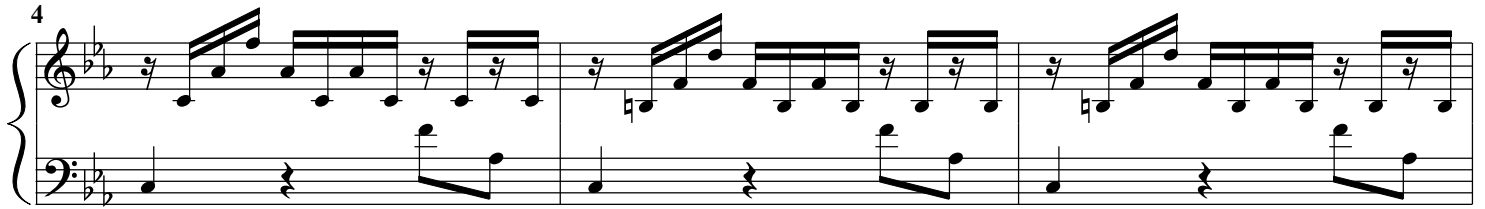
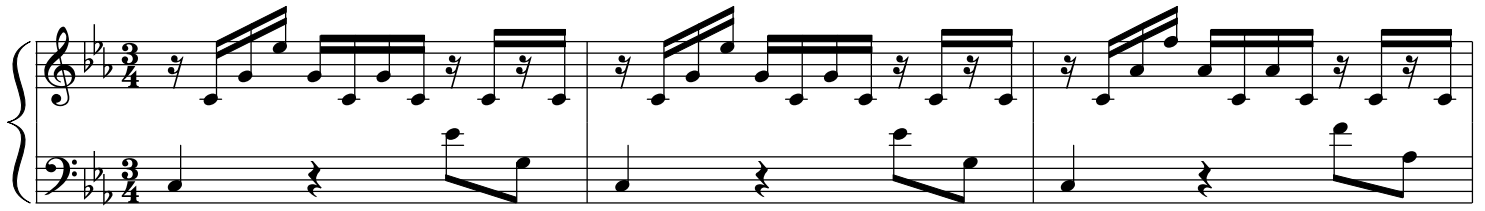


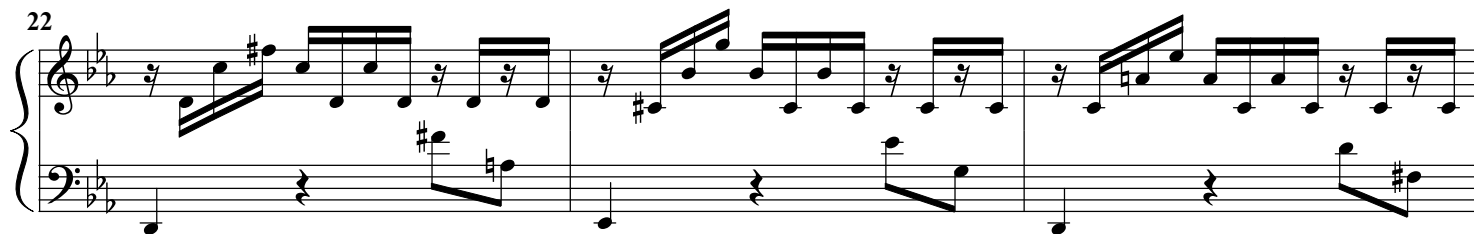
Prelude in C minor for the Lute modified "for big hands"

Creative Commons

J.S. Bach (BWV999) - Patrice Reich



22



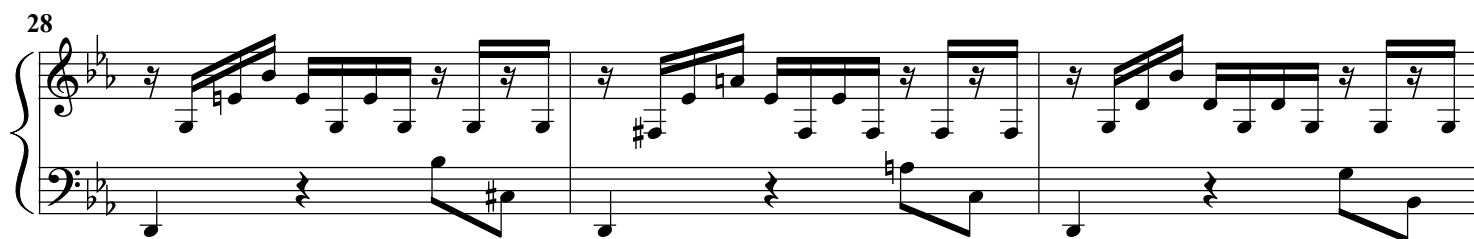
System 22: Treble and bass staves. Treble staff has a key signature of two flats (Bb, Eb) and a common time signature. It contains a series of eighth-note chords and single notes, with some beamed eighth notes. Bass staff has a key signature of two flats and contains mostly whole and half notes with rests.

25



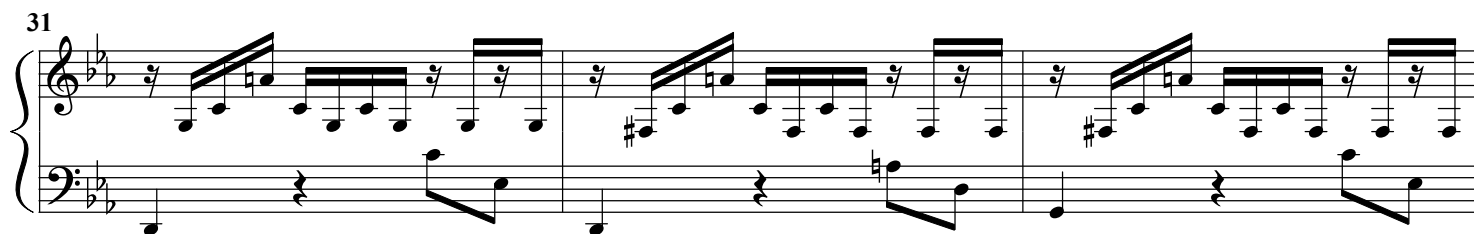
System 25: Treble and bass staves. Treble staff continues the eighth-note pattern. Bass staff continues with whole and half notes and rests.

28



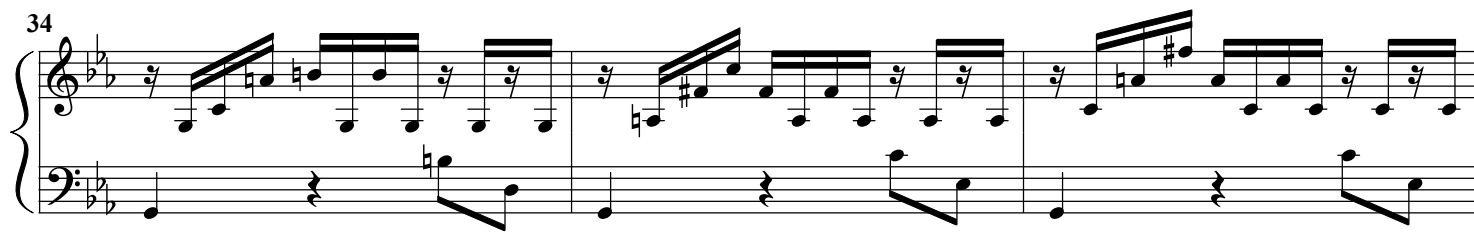
System 28: Treble and bass staves. Treble staff continues the eighth-note pattern. Bass staff continues with whole and half notes and rests.

31



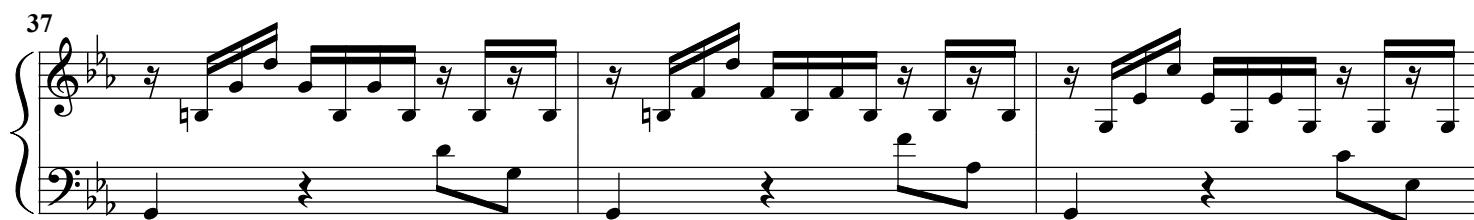
System 31: Treble and bass staves. Treble staff continues the eighth-note pattern. Bass staff continues with whole and half notes and rests.

34



System 34: Treble and bass staves. Treble staff continues the eighth-note pattern. Bass staff continues with whole and half notes and rests.

37



System 37: Treble and bass staves. Treble staff continues the eighth-note pattern. Bass staff continues with whole and half notes and rests.

40



System 40: Treble and bass staves. Treble staff continues the eighth-note pattern. Bass staff continues with whole and half notes and rests. The system ends with a double bar line.