

Partita di Follia & Flauto

This image shows a handwritten musical score for a piece titled "Partita di Follia & Flauto". The score is written on ten staves, organized into two systems of five staves each. The first system (staves 1-5) begins with a treble clef, a key signature of one sharp (F#), and a 6/8 time signature. The second system (staves 6-10) begins with a bass clef, a key signature of one sharp (F#), and a 4/4 time signature. The notation includes various rhythmic values, accidentals, and dynamic markings such as *mp* and *pp*. The handwriting is in dark ink on aged paper.

3

Handwritten musical score for system 3, consisting of six staves. The top staff is a treble clef with a key signature of one flat and a 2/4 time signature. It contains a melodic line with various ornaments and slurs. The second and fourth staves are bass clefs with a 2/4 time signature, containing accompaniment with chords and rhythmic patterns. The third and fifth staves are treble clefs with a 2/4 time signature, containing melodic lines. The sixth staff is a bass clef with a 2/4 time signature, containing accompaniment. The system concludes with a double bar line.

4

Handwritten musical score for system 4, consisting of two staves. The top staff is a treble clef with a key signature of one flat and a 2/4 time signature. It contains a melodic line with various ornaments and slurs. The bottom staff is a bass clef with a 2/4 time signature, containing accompaniment with chords and rhythmic patterns. The system concludes with a double bar line.

A handwritten musical score consisting of six systems of staves. Each system contains two staves, likely representing a grand staff (treble and bass clefs). The notation includes various rhythmic values, accidentals, and dynamic markings such as *f* and *a*. The first system shows a melodic line in the upper staff and a bass line in the lower staff. The second system features a more complex melodic line with many beamed notes. The third system has a similar complex melodic line. The fourth system continues with dense melodic writing. The fifth system shows a melodic line with some rests. The sixth system concludes with a melodic line and a final cadence. The handwriting is clear but shows signs of being a working draft.



6

Handwritten musical score for system 6, measures 1-4. The system consists of four staves. The first staff is a treble clef with a 2/4 time signature, containing a melodic line with eighth and sixteenth notes. The second staff is a bass clef with a 2/4 time signature, containing a bass line with quarter and eighth notes. The third staff is a treble clef with a 2/4 time signature, containing a complex melodic line with many beamed notes. The fourth staff is a bass clef with a 2/4 time signature, containing a bass line with quarter and eighth notes. The system ends with a double bar line.

7

Handwritten musical score for system 7, measures 1-4. The system consists of four staves. The first staff is a treble clef with a 2/4 time signature, containing a complex melodic line with many beamed notes. The second staff is a bass clef with a 2/4 time signature, containing a bass line with quarter and eighth notes. The third staff is a treble clef with a 2/4 time signature, containing a complex melodic line with many beamed notes. The fourth staff is a bass clef with a 2/4 time signature, containing a bass line with quarter and eighth notes. The system ends with a double bar line.



This image shows a handwritten musical score for piano, consisting of six systems of staves. Each system contains a grand staff with a treble clef on the upper staff and a bass clef on the lower staff. The notation is dense and includes various musical symbols such as notes, rests, slurs, and dynamic markings. The first system features a complex, rapid melodic line in the treble clef with many beamed notes, while the bass clef part is more rhythmic. The second system continues this pattern with similar complexity. The third system shows a more melodic and flowing line in the treble clef. The fourth system has a very active treble clef part with many slurs and ties. The fifth system shows a more relaxed melodic line in the treble clef. The sixth system concludes with a few final notes and rests in both staves. The handwriting is clear but shows signs of being a working draft.

9

Handwritten musical score for measures 9-10. The score is written on two staves per measure, with a brace on the left. The top staff is in treble clef and the bottom staff is in bass clef. The key signature has one flat (B-flat). The time signature is 4/4. Measure 9 features a complex, fast-moving melodic line in the treble staff with many beamed notes and a steady bass line in the bass staff. Measure 10 continues this pattern, with the treble staff showing a similar dense texture and the bass staff providing a rhythmic accompaniment.

10

Handwritten musical score for measures 11-12. The score is written on two staves per measure, with a brace on the left. The top staff is in treble clef and the bottom staff is in bass clef. The key signature has one flat (B-flat). The time signature is 4/4. Measure 11 features a complex, fast-moving melodic line in the treble staff with many beamed notes and a steady bass line in the bass staff. Measure 12 continues this pattern, with the treble staff showing a similar dense texture and the bass staff providing a rhythmic accompaniment.

A handwritten musical score consisting of ten staves. The notation is dense and includes various rhythmic values, accidentals, and dynamic markings. A large, stylized 'ji' is written on the left side of the third staff. The score is organized into pairs of staves, with a brace on the left of each pair. The first two staves are connected by a brace. The third and fourth staves are connected by a brace. The fifth and sixth staves are connected by a brace. The seventh and eighth staves are connected by a brace. The ninth and tenth staves are connected by a brace. The notation includes many beamed notes, some with accents, and some with dynamic markings like 'p' and 'a'. The overall style is that of a working draft or a composer's sketch.



114

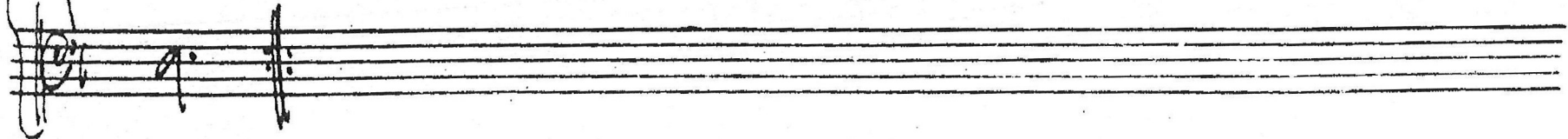
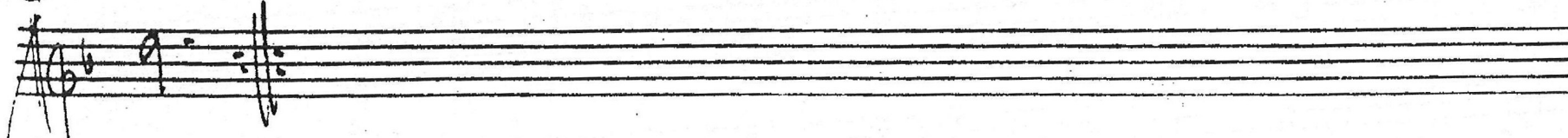
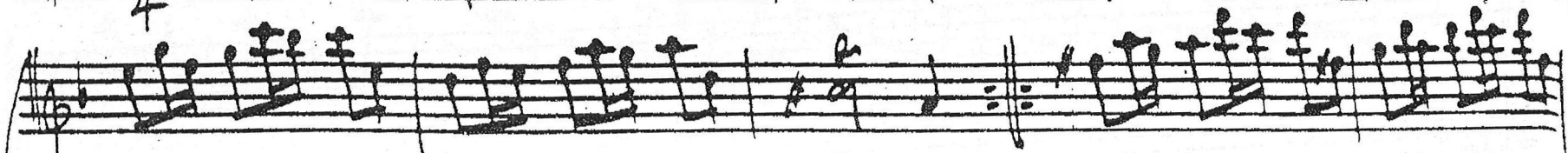
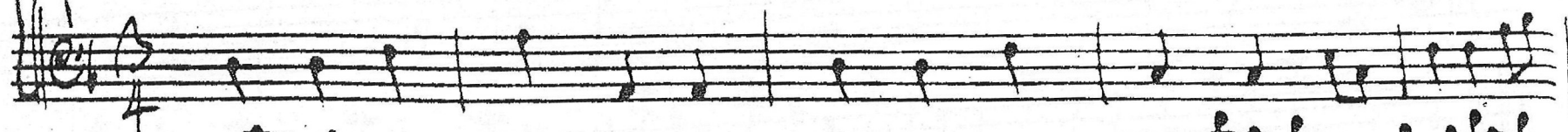
Handwritten musical notation for the first system, consisting of two staves. The top staff is in treble clef with a key signature of one flat and a 2/4 time signature. It contains a complex melodic line with many beamed eighth and sixteenth notes. The bottom staff is in bass clef with a key signature of one flat and a 2/4 time signature, containing a simpler bass line with quarter and eighth notes.

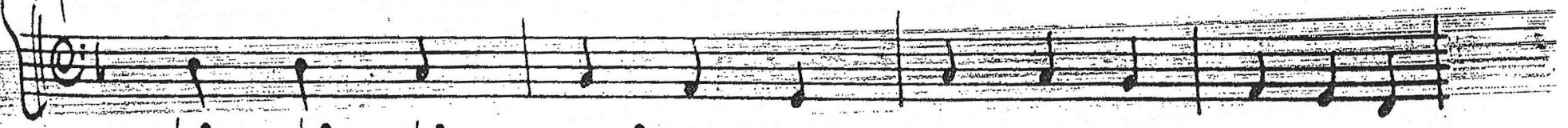
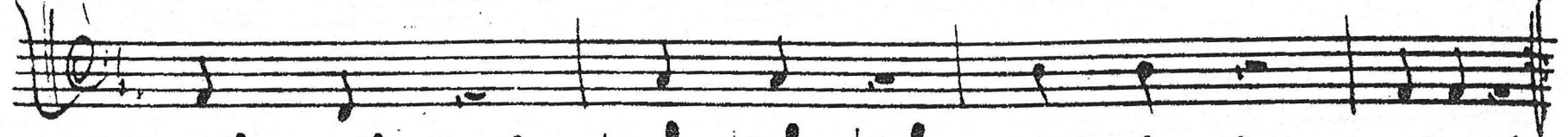
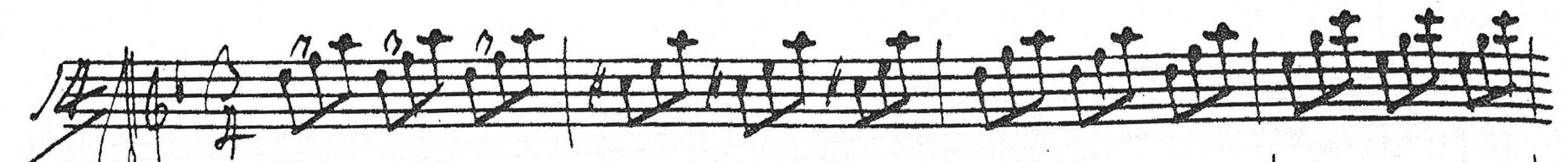
Handwritten musical notation for the second system, consisting of two staves. The top staff continues the complex melodic line from the first system. The bottom staff continues the bass line, ending with a double bar line and repeat dots.

Handwritten musical notation for the third system, consisting of two staves. The top staff continues the complex melodic line, with some notes marked with a 'b' (flat). The bottom staff continues the bass line.

Handwritten musical notation for the fourth system, consisting of two staves. The top staff continues the complex melodic line, ending with a double bar line and repeat dots. The bottom staff continues the bass line, also ending with a double bar line and repeat dots.

10







Handwritten musical score on ten staves. The notation includes treble and bass clefs, a key signature of one flat, and a 3/4 time signature. The score is divided into three systems of two staves each. The first system (staves 1-2) begins with a measure number '15' and features a complex melodic line with many beamed notes in the upper staff, and a simpler bass line in the lower staff. The second system (staves 3-4) continues the melodic complexity in the upper staff, with some slurs and accents, while the bass staff remains relatively simple. The third system (staves 5-6) shows a similar pattern of complex upper-staff figures and simpler lower-staff accompaniment. The notation is dense and appears to be a study or a complex piece of music.

16

17

Handwritten musical score for guitar and voice, consisting of 10 staves. The score includes a guitar part with complex chordal textures and a vocal line with lyrics. The notation is in a single system with a treble clef and a key signature of one sharp (F#). The guitar part features dense chordal textures, often with multiple notes per string, and some melodic lines. The vocal line includes lyrics written below the notes. The score is written in a clear, legible hand.

18

Handwritten musical score for guitar and voice, consisting of 10 staves. The score includes a guitar part with complex chordal textures and a vocal line with lyrics. The notation is in a single system with a treble clef and a key signature of one sharp (F#). The guitar part features dense chordal textures, often with multiple notes per string, and some melodic lines. The vocal line includes lyrics written below the notes. The score is written in a clear, legible hand.



19

Handwritten musical score for measures 19-20. The score is written on six staves, with the first two staves of each measure pair connected by a brace on the left. The notation includes treble and bass clefs, a key signature of one sharp (F#), and a 2/4 time signature. The music features a complex, fast-moving melodic line in the upper staves, characterized by dense sixteenth-note patterns and frequent accidentals. The lower staves provide a more rhythmic accompaniment with eighth and sixteenth notes. The piece concludes with a double bar line and repeat dots at the end of the second staff of measure 20.

20

Handwritten musical score for measures 21-22. The score is written on two staves, with a brace on the left. The notation includes treble and bass clefs, a key signature of one sharp (F#), and a 2/4 time signature. The music continues with a complex, fast-moving melodic line in the upper staff and a rhythmic accompaniment in the lower staff. The piece concludes with a double bar line and repeat dots at the end of the second staff of measure 22.

Handwritten musical notation for the first system, consisting of two staves. The upper staff features a complex, dense texture with many beamed notes and some accidentals. The lower staff contains a simpler melodic line with fewer notes and rests.

Handwritten musical notation for the second system, consisting of two staves. The upper staff continues the dense, beamed-note texture from the first system. The lower staff continues the simpler melodic line.

Handwritten musical notation for the third system, consisting of two staves. The upper staff has a very dense, almost continuous stream of beamed notes. The lower staff continues the melodic line.

Handwritten musical notation for the fourth system, consisting of two staves. The upper staff shows a dense texture of beamed notes. The lower staff continues the melodic line.

22

Handwritten musical score for system 22, measures 1-8. The system consists of four staves. The top staff is in treble clef with a 2/4 time signature and contains complex chordal textures with many beamed notes and some accidentals. The second staff is in bass clef and contains a more melodic line with some beaming. The third staff is in treble clef and contains dense chordal textures with many beamed notes. The fourth staff is in bass clef and contains a melodic line with some beaming. The system ends with a double bar line.

23

Handwritten musical score for system 23, measures 1-8. The system consists of four staves. The top staff is in treble clef with a 2/4 time signature and contains complex chordal textures with many beamed notes and some accidentals. The second staff is in bass clef and contains a more melodic line with some beaming. The third staff is in treble clef and contains dense chordal textures with many beamed notes. The fourth staff is in bass clef and contains a melodic line with some beaming. The system ends with a double bar line.



A handwritten musical score consisting of ten staves. The notation is dense and includes various musical symbols such as notes, rests, and accidentals. The first staff features a complex melodic line with many beamed notes and some unusual markings above the staff. The second staff has a more rhythmic pattern with some rests. The third staff begins with a large '2' and contains a series of notes with stems pointing upwards. The fourth staff continues with a similar rhythmic pattern. The fifth staff has notes with stems pointing downwards. The sixth staff shows a sequence of notes with stems pointing downwards. The seventh staff has notes with stems pointing downwards. The eighth staff has notes with stems pointing downwards. The ninth staff has notes with stems pointing downwards. The tenth staff has notes with stems pointing downwards. The notation is somewhat messy and appears to be a working draft or a personal sketch.

25

A handwritten musical score for piano, consisting of 12 staves of music. The score is written in a single system with a grand staff (treble and bass clefs) and a piano (p) dynamic marking. The music is in 4/4 time and features complex rhythmic patterns, including triplets and sixteenth-note runs. The notation is dense and includes various articulations and slurs. The score is divided into measures by vertical bar lines, and the piece concludes with a double bar line and repeat dots.

