

# Sinfonia da "Il Re Pastore"

## Violino I

Friedrich der Große (1712-1786)

[1.] Allegro

4

8

11

13

16

19

21

23

26

28

31

Violino I score for Friedrich der Große - Il Re Pastore - Sinfonia - Rev: 1.0. The score is written in treble clef with a key signature of two sharps (F# and C#). The music features various dynamics and ornaments.

Measures 35-38: First staff, measures 35-38. Includes trills (*tr*) and a fermata.

Measures 39-41: Second staff, measures 39-41. Dynamics: *p*.

Measures 42-43: Third staff, measures 42-43. Dynamics: *f*.

Measures 44-46: Fourth staff, measures 44-46. Includes trills (*tr*).

Measures 47-48: Fifth staff, measures 47-48.

Measures 49-50: Sixth staff, measures 49-50.

Measures 51-53: Seventh staff, measures 51-53. Includes trills (*tr*).

Measures 54-57: Eighth staff, measures 54-57. Dynamics: *p*.

Measures 58-60: Ninth staff, measures 58-60.

Measures 61-63: Tenth staff, measures 61-63. Dynamics: *f*. Includes trills (*tr*).

Measures 64-67: Eleventh staff, measures 64-67. Includes trills (*tr*).

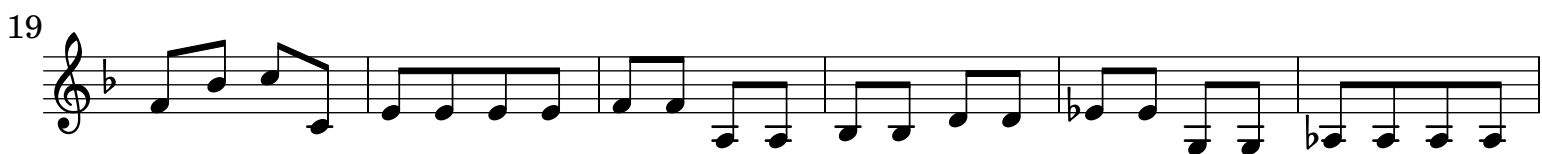
Measures 68-70: Twelfth staff, measures 68-70. Includes trills (*tr*).

Measures 71-73: Thirteenth staff, measures 71-73. Includes trills (*tr*).

Measures 74-76: Fourteenth staff, measures 74-76. Includes trills (*tr*).

Musical score for Violino I, measures 77-113. The score is written in treble clef with a key signature of two sharps (F# and C#). The music features a variety of rhythmic patterns, including eighth and sixteenth notes, and rests. Trills (tr) are indicated above several notes. Dynamics include piano (p) and forte (f). The score concludes with a fermata over the final note.

## [2.] Andante



## [3.] Scherzando Allegro

