

Matias Ekert

2 prelúdes

op 6 no 1

Licensed under¹



¹ You are free to:
Share — copy and redistribute the material in any medium or format
Adapt — remix, transform, and build upon the material
for any purpose, even commercially.

Under the following terms:

Attribution — You must give appropriate credit, provide a link to the license, and indicate if changes were made. You may do so in any reasonable manner, but not in any way that suggests the licensor endorses you or your use.
No additional restrictions — You may not apply legal terms or technological measures that legally restrict others from doing anything the license permits.

prelude no_1

Thias, Bergen 11'03

1/4=120

Measures 1-4 of the prelude. The piece is in B-flat major (two flats) and 6/8 time. Measure 1 starts with a forte (*f*) dynamic. The right hand plays a series of eighth-note chords, while the left hand plays a steady eighth-note bass line. Measure 4 ends with a repeat sign and a change to 4/4 time.

Measures 5-8 of the prelude. Measure 5 begins with a half rest in the right hand. The key signature changes to D-flat major (three flats) at measure 6. The piece features a repeat sign at the end of measure 6. The right hand plays chords, and the left hand continues with a bass line.

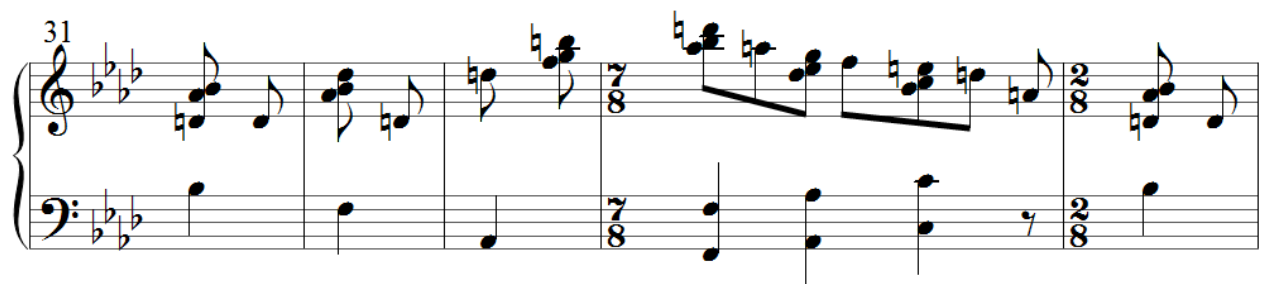
Measures 9-12 of the prelude. Measure 9 starts with a half rest in the right hand. The piece includes a repeat sign at the end of measure 10. The right hand plays chords, and the left hand plays a bass line.

Measures 84-88 of the prelude. Measure 84 starts with a first ending bracket labeled '1.'. The key signature changes to D-flat major (three flats) at measure 85. The piece includes a second ending bracket labeled '2.' at measure 87. The right hand plays chords, and the left hand plays a bass line. The piece concludes with a final chord in measure 88.

prelude no_2

1/4=108 (1/4=90)

Thias, Bergen 1'2004



36

41

41

43

43

48

48

55

55

63

63

68