

Violoncello

8

CONCERTO XI *Con due Violini e Violoncello obbligato.* *Allegro Solo*

19

*Adagio Spiccato Tutti* *Allegro*

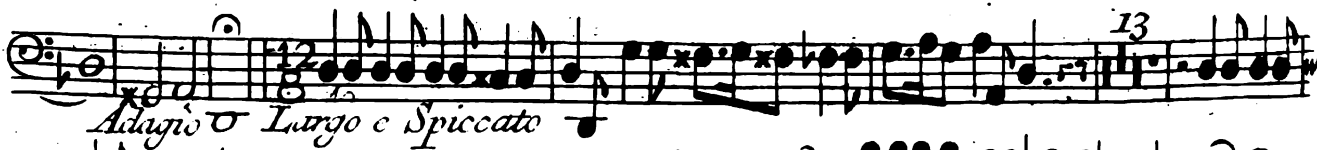
*f* *Solo*

*Tutti*

Violoncello



*Tutti*



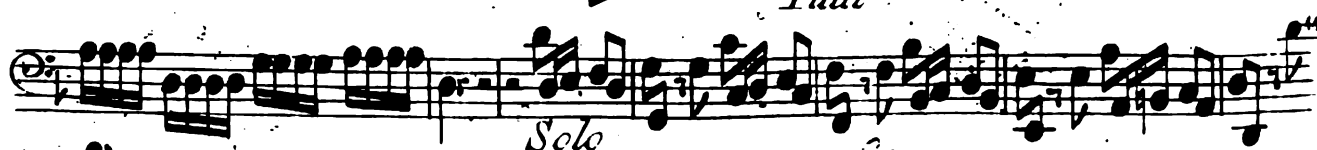
*Adagio o Largo e Spiccato*



*Allegro Solo*



*Tutti*



*Solo*



*Tutti*



*V.S. Volta Subito S.P.*

*Violoncello*

*Solo*

*Tutti Soli Tutti Solo*

*Tutti*

*Piano*

*Forte*

This section of the cello part consists of six staves of music. It begins with a *Solo* dynamic and features a variety of articulations, including slurs and accents. The dynamics shift to *Tutti*, then *Soli*, *Tutti*, and *Solo* again. The music concludes with a *Tutti* dynamic and a *Piano* marking, followed by a *Forte* dynamic.

**CONCERTO XII** *Con Violino Solo obbligato.*

*Allegro*

*Piano Forte*

*Piano Forte*

*Piano Forte*

*Piano Forte*

This section, titled **CONCERTO XII**, is marked *Con Violino Solo obbligato.* and *Allegro*. It consists of six staves of music. The dynamics are marked as *Piano* and *Forte* in alternating pairs across the staves. The music features complex rhythmic patterns and articulations, including slurs and accents.