

Die Jahreszeiten

SINFONIE

von

LOUIS SPOHR.

Zweite Violine.

ERSTE ABTHEILUNG.

Der Winter.

Allegro maestoso.

1 2 1

f

p *f* *p* *f2*

p *f2* *f* *dim.* **A**

2 2 *f* *dim.* *p*

B *pp* *pizz.* *p arco* *cresc.* *p* *cresc.* *p*

cresc. *f* *f2* *f2* *f2* *f*

tr

dim. *pp* *p* *f* *f* *dim.* **C** *pp* *p*

f *f2* *p*

Zweite Violine.

Musical score for the second violin part, featuring various dynamics, articulations, and performance instructions. The score is written in treble clef with a key signature of two sharps (F# and C#).

Dynamics and performance markings include: *mf*, *fz*, *fz*, *fz*, *p*, *dim.*, *pp*, *f*, *fz*, *p*, *fz*, *f*, *fz*, *tr*, *cresc.*, *ff*, *pp*, *pizz.*, *arco*, *p*, *pizz.*, *arco*, *pizz.*, *arco*, *cresc.*, *dim.*, *pp*, *fz*, *p*, *fz*.

Performance instructions include: *arco*, *pizz.*, *arco*, *cresc.*, *dim.*, *pp*, *fz*, *p*, *fz*.

Section markers: **D**, **E**, **F**, **G**, **H**.

Fingerings: 3, 2, 1.

The score concludes with the number 1649.

Zweite Violine.

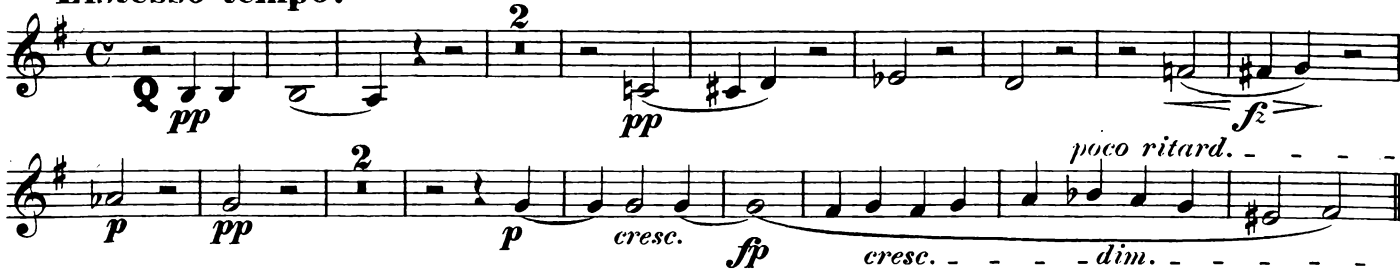
The musical score for the second violin part, page 3, is written in G major and consists of 12 staves. The dynamics range from *p* (piano) to *ff* (fortissimo), with *fz* (forzando) and *dim.* (diminuendo) also present. Performance markings include *arco* and *pizz.* (pizzicato). The score features several first and second endings, marked with '1' and '2'. The piece is divided into sections marked with letters K, L, and M. The key signature has one sharp (F#), and the time signature is not explicitly shown but appears to be 2/4.

Zweite Violine.

The musical score for the second violin part consists of 12 staves of music. The key signature is three sharps (F#, C#, G#) and the time signature is 3/4. The score includes various dynamic markings such as *mf*, *fz*, *f*, *p*, *dim.*, *ff*, *pizz.*, *arco*, and *pp*. Performance instructions include *dim.*, *tr*, *arco*, and *pizz.*. There are also numerical markings like 'N', '1', '2', '3', and 'O'. The music features a variety of rhythmic patterns, including eighth and sixteenth notes, and rests.



Allegretto tempo. Der Uebergang zum Frühling.



Moderato. Der Frühling.



Zweite Violine.

tr
 f
 $cresc.$

Presto.

p
 f

p
 $cresc.$
 f
 p
 f
 p

p
 $cresc.$

p
 f

p
 f
 p
 $cresc.$

f
 p
 $dim.$

Moderato.

$cresc.$
 mf
 p

p
 tr

Zweite Violine.

The musical score for the second violin part on page 7 consists of ten staves of music in G major. The notation includes various dynamics and performance instructions:

- Staff 1: *tr*, *cresc.*, *f*, triplet of eighth notes.
- Staff 2: *p*, triplet of eighth notes.
- Staff 3: *cresc.*, *f*, triplet of eighth notes.
- Staff 4: *p*, *fz*, *p*.
- Staff 5: *cresc.*, *mf*, *p*.
- Staff 6: *p*, *tr*.
- Staff 7: *cresc.*, *f*, *E*, *p*.
- Staff 8: *pp*.
- Staff 9: *poco rit.*, *pp*, *1*.

ZWEITE ABTHEILUNG.

Der Sommer.

Largo.
sul G loco

pp con sordini

pp

fz fz *p* *pp* *mf*

fz *p* *pp* *pp*

dim. **A** *pp*

The musical score for the second violin part is divided into five systems, each with specific performance instructions:

- System B:** Starts with a tremolo (*trem.*) and a dynamic of *p*. It includes several sixteenth-note runs marked with an '8' and a *fz* (forzando) dynamic.
- System C:** Features a piano (*p*) dynamic, followed by a *pp* (pianissimo) section, and concludes with a *pp* dynamic.
- System D:** Contains dynamics of *fz dim. fz*, *dim.*, and *pp*.
- System E:** Begins with a first ending bracket (*1*), followed by dynamics of *f*, *p*, *pp*, and *morendo*.

Zweite Violine.

Allegro vivace.

Einleitung zum Herbst.

10

senza sordini

mf *f* *mf* *f*

Der Herbst.

Listesso tempo.

p *f* *dim.* *p*

cresc. *f*

p *f* *dim.* *p*

f

pp *f* *dim.*

p *f* *dim.* *p*

cresc. *f* *dim.* *p*

The musical score for the second violin part consists of 12 staves. The key signature is one sharp (F#) and the time signature is 2/4. The score begins with a *cresc.* marking and a dynamic of *f*. A section marked **D** starts on the second staff. The music features a variety of rhythmic patterns, including sixteenth-note runs and slurred phrases. Dynamics range from *f* to *pp*. A section marked **E** begins on the eighth staff, featuring a *pp* dynamic and a *cresc.* marking. The score concludes with a final melodic phrase on the twelfth staff.

Zweite Violine.

The musical score for the second violin part consists of 12 staves. It begins with a treble clef and a key signature of one sharp (F#). The first staff contains a section marked 'F' with a 6/4 time signature, featuring a sixteenth-note pattern and dynamic markings 'cresc.' and 'f'. The second staff continues with a similar rhythmic pattern. The third staff introduces a section marked 'G' with a common time signature, starting with a piano 'p' dynamic. The fourth staff shows a dynamic shift from 'p' to 'f' with a 'dim.' marking. The fifth staff continues with a 'p' dynamic. The sixth staff features a triplet of eighth notes and a section marked 'H' with a 6/4 time signature and a forte 'f' dynamic. The seventh staff continues with a 'p' dynamic. The eighth staff has a section marked 'I' with a common time signature, starting with a pianissimo 'pp' dynamic and ending with a 'dim.' marking. The ninth staff continues with a 'f' dynamic and a 'dim.' marking. The tenth staff features a 'cresc.' marking and a forte 'f' dynamic. The eleventh staff continues with a 'f' dynamic. The twelfth staff has a section marked 'K' with a 6/4 time signature and a forte 'f' dynamic.

Zweite Violine.

Musical score for the second violin part, page 13. The score consists of 14 staves of music in G major, 4/4 time. It features various musical notations including slurs, accents, and dynamic markings such as *f*, *pp*, *p*, and *dim.* The piece concludes with a double bar line and the word **Fine.**