

# Canon

(Canon per 3 Violini e Basso)

Johann Pachelbel  
Arr.: Andreas Brencic

Ruhig

A

Trompete

Orgel

Musical score for Trompete and Orgel, measures 1-8. The Trompete part starts with a whole rest for 4 measures, then plays a sequence of notes: G4, A4, B4, C5, B4, A4, G4. The Orgel part consists of a right-hand melody and a left-hand accompaniment of chords and moving lines.

B

C

9

Musical score for Trompete and Orgel, measures 9-16. The Trompete part plays a sequence of notes: G4, A4, B4, C5, B4, A4, G4, F4, E4, D4, C4. The Orgel part continues with a right-hand melody and a left-hand accompaniment.

D

E

17

Musical score for Trompete and Orgel, measures 17-24. The Trompete part plays a sequence of notes: G4, A4, B4, C5, B4, A4, G4, F4, E4, D4, C4, B3, A3, G3. The Orgel part continues with a right-hand melody and a left-hand accompaniment.

Canon

2

F

23

Musical score for Canon 2, measures 23-26. The score is in G minor (three flats) and 4/4 time. It features a piano accompaniment and a vocal line. The piano part consists of a right-hand melody with eighth-note patterns and a left-hand bass line with quarter notes. The vocal line is a single staff with a treble clef, showing a melodic line with some rests.

G

27

Musical score for Canon 2, measures 27-30. The piano accompaniment continues with similar eighth-note patterns in the right hand and quarter notes in the left hand. The vocal line shows a more active melodic line with eighth notes and some rests.

H

31

Musical score for Canon 2, measures 31-34. The piano accompaniment features more complex eighth-note patterns in the right hand. The vocal line continues with a melodic line that includes some rests and eighth-note runs.

Canon

3

I

35

Musical score for Canon 3, measures 35-38. The score is in G minor (three flats) and 3/4 time. It features a vocal line, a piano accompaniment with a busy right hand and a steady left hand, and a separate bass line. A box labeled 'I' is positioned above the vocal line at measure 37.

K

39

Musical score for Canon 3, measures 39-43. The score continues with the vocal line, piano accompaniment, and bass line. A box labeled 'K' is positioned above the vocal line at measure 40.

L

44

Musical score for Canon 3, measures 44-48. The score concludes with the vocal line, piano accompaniment, and bass line. A box labeled 'L' is positioned above the vocal line at measure 45. A trill (*tr*) is marked above a note in the piano right hand at measure 47.

# Trompete in B

## Canon

(Canon per 3 Violini e Basso)

Johann Pachelbel  
Arr.: Andreas Brennic

Ruhig

A



9 B

C



17 D

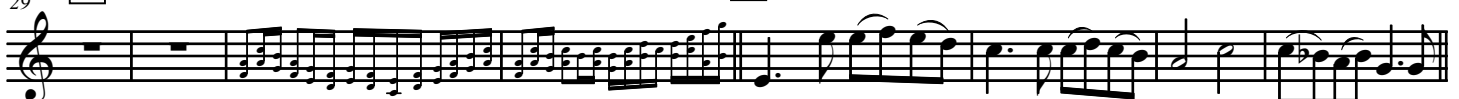
E

F



29 G

H



37 I

K



45 L

