

Fagott

Lustige Feldmusik

Suite 2

Aus den Monatsheften für Musikgeschichte Leipzig 1895, Band 9

Ouverture

Johann Philipp Krieger



16 Presto



Entrée Rondeaux

Fine



Menuet



9



17



Entrée



5



Suite



13



17



Entrée



6



11



16



21



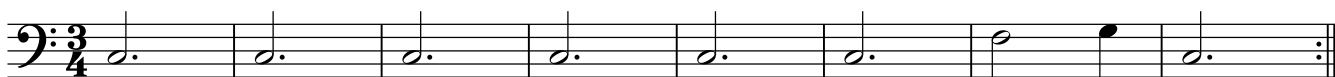
Traquenar



7



Menuet



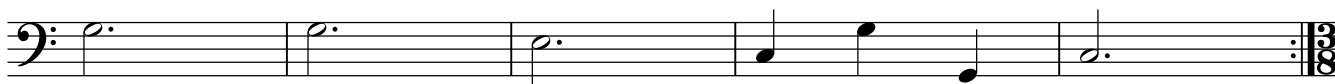
9



15



20



Passpie

Musical notation for the first staff of the Passpie section, starting at measure 4. The staff is in bass clef with a 3/8 time signature. It contains a sequence of eighth and quarter notes.

9

Musical notation for the second staff of the Passpie section, starting at measure 9. The staff is in bass clef with a 3/8 time signature. It contains a sequence of quarter and eighth notes.

18

Musical notation for the third staff of the Passpie section, starting at measure 18. The staff is in bass clef with a 3/4 time signature. It contains a sequence of quarter, eighth, and sixteenth notes.

Menuet

Musical notation for the first staff of the Menuet section, starting at measure 18. The staff is in bass clef with a 3/4 time signature. It contains a sequence of quarter and eighth notes.

9

Musical notation for the second staff of the Menuet section, starting at measure 9. The staff is in bass clef with a 3/4 time signature. It contains a sequence of quarter and eighth notes.

17

Musical notation for the third staff of the Menuet section, starting at measure 17. The staff is in bass clef with a 3/4 time signature. It contains a sequence of quarter and eighth notes.

25

Musical notation for the fourth staff of the Menuet section, starting at measure 25. The staff is in bass clef with a 3/4 time signature. It contains a sequence of quarter and eighth notes.

31

Musical notation for the fifth staff of the Menuet section, starting at measure 31. The staff is in bass clef with a 3/4 time signature. It contains a sequence of quarter and eighth notes.