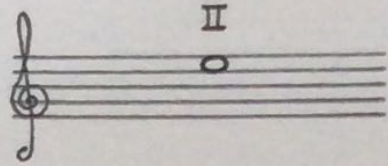


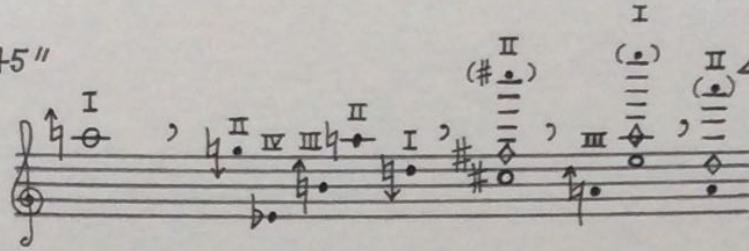
note: the microtones are inflections not tempered quarter-tones, i.e. these notes should be played slightly sharper or flatter as necessary.

2'05" ↔ 2'55"



2'45" ↔ 3'45"

3'55" ↔ 4'45"



I

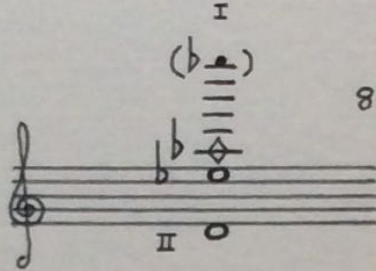
(#)

(b)

(#)

(b)

7'15" ↔ 8'25"



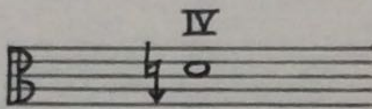
I

(b)

II

8'15" ↔ 9'25"

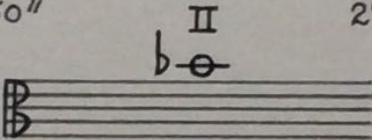
13'25" ↔ 14'45"



IV

14'35" ↔ 15'55"

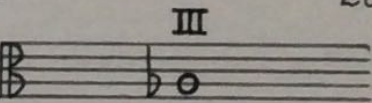
27'30" ↔ 27'50"



II

27'40" ↔ 28'00"

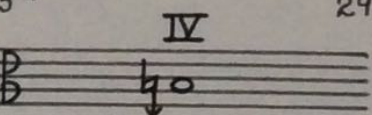
28'15" ↔ 28'45"



III

28'35" ↔ 29'00"

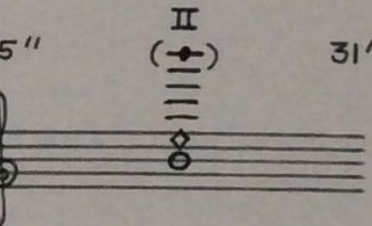
29'20" ↔ 29'55"



IV

29'45" ↔ 30'20"

30'55" ↔ 31'25"

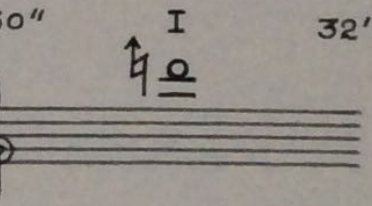


II

(b)

31'15" ↔ 31'45"

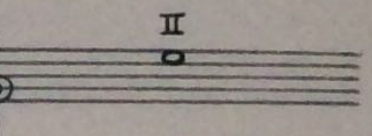
31'50" ↔ 32'30"



I

32'20" ↔ 33'00"

33'40" ↔ 34'30"



II

34'50" ↔ 35'40"



Viola

37'05" ↔ 37'40" I (•) II 37'30" ↔ 38'05"

39'50" ↔ 40'15" I (h•) III 40'05" ↔ 40'30"

41'35" ↔ 41'55" I (b•) II 41'45" ↔ 42'05"

43'05" ↔ 44'00" I (h•) I 43'50" ↔ 44'45"

46'20" ↔ 47'10" IV 47'00" ↔ 47'50"

48'25" ↔ 49'05" III 48'55" ↔ 49'35"

51'30" ↔ 51'50" I (b•) IV 51'40" ↔ 52'00"

52'40" ↔ 53'40" I (h•) IV 53'30" ↔ 54'30"

54'20" ↔ 54'50" I (h•) III II 54'40" ↔ 55'10"

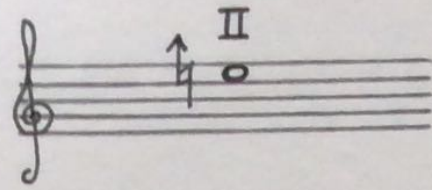
55'35" ↔ 56'20" II (b•) 56'10" ↔ 56'55"



Viola

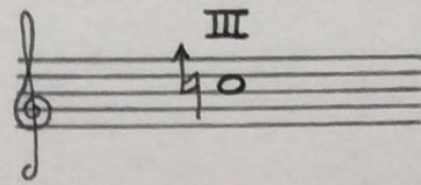
58'05" ↔ 58'55"

58'45" ↔ 59'35"



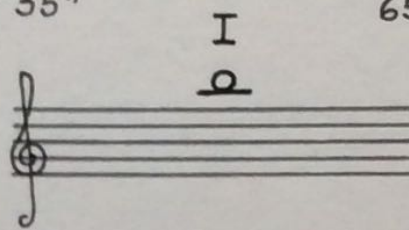
61'15" ↔ 62'35"

62'25" ↔ 63'45"



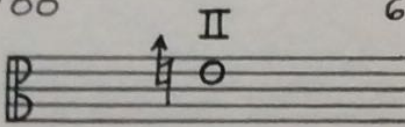
65'10" ↔ 65'35"

65'25" ↔ 65'50"



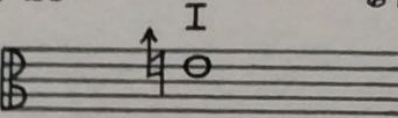
67'25" ↔ 68'00"

67'50" ↔ 68'25"



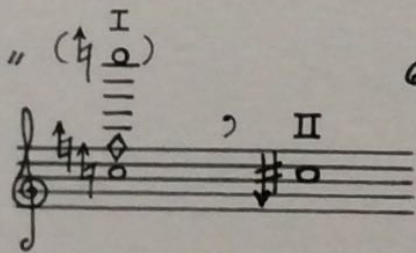
68'55" ↔ 69'25"

69'15" ↔ 69'45"



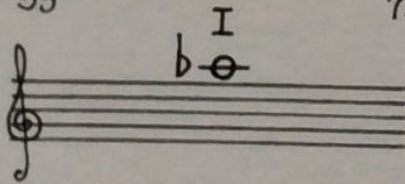
69'35" ↔ 69'55" (♯) (I)

69'45" ↔ 70'05"



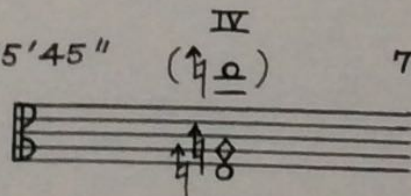
73'15" ↔ 73'55"

73'45" ↔ 74'25"



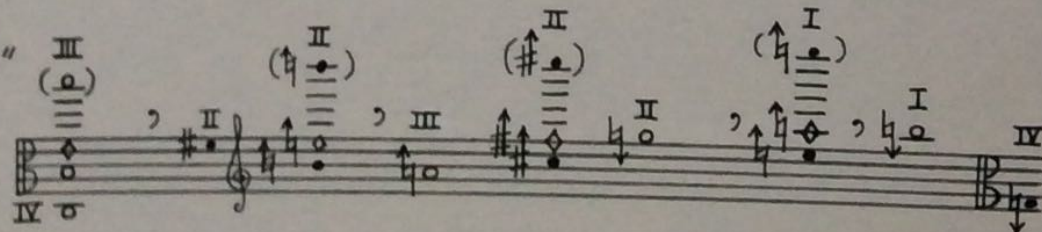
75'00" ↔ 75'45"

75'35" ↔ 76'20"



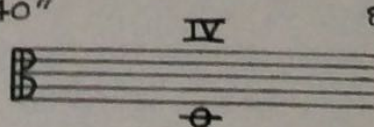
77'30" ↔ 78'20"

78'10" ↔ 79'00"



83'10" ↔ 83'40"

83'30" ↔ 84'00"





Viola

84'25" ↔ 85'05"      I  
(⊕)  
84'55" ↔ 85'35"

87'05" ↔ 88'25"      II  
(⊕)  
88'35" ↔ 89'55"

90'10" ↔ 90'30"      I  
90'20" ↔ 90'40"

91'50" ↔ 92'20"      III  
92'10" ↔ 92'40"

93'30" ↔ 94'00"      IV  
93'50" ↔ 94'20"

97'20" ↔ 97'45"      III  
97'35" ↔ 98'00"      IV