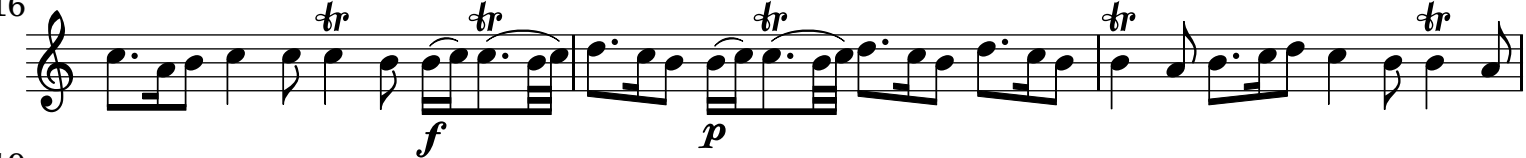


Concerto grosso XII/Op. 3

Violino I obbligato

F. Manfredini (1684-1762)

[1.] Largo



37

40

43

46

49

52

[2.] Largo

8

14

21

[3.] Allegro

8

16 *tr* *Solo*

25 *Solo* *Tutti*

34

42 *Soli tr* *p* *f*

53 *tr* *Tutti*

61 *tr* *Soli tr* *p*

73 *f* *tr* *Soli tr* *p* *f* *tr*

82 *Solo tr* *tr* *Tutti* *Solo tr* *tr* *Tutti*

90 *Solo* *tr* *Tutti* *tr* *Solo* *tr* *tr*

99 *tr* *Solo*

107 *Tutti*

116 *tr*

124