

I

Andante tranquillo.

3/4

The first system consists of two staves. The upper staff is a treble clef staff with a 3/4 time signature, containing several whole rests. The lower staff is a bass clef staff with a 3/4 time signature, containing a melodic line with notes, slurs, and some handwritten markings above it.

p espressivo e molto legato

3/4

The second system consists of two staves. The upper staff is a treble clef staff with a 3/4 time signature, containing several whole rests. The lower staff is a bass clef staff with a 3/4 time signature, containing a melodic line with notes, slurs, and some handwritten markings above it.

p

The third system consists of two staves. The upper staff is a treble clef staff with a 3/4 time signature, containing a melodic line with notes, slurs, and some handwritten markings above it. The lower staff is a bass clef staff with a 3/4 time signature, containing a melodic line with notes, slurs, and some handwritten markings above it.

p espressivo e molto legato

E
124
WF

1 4 3 1 1

The fourth system consists of two staves. The upper staff is a treble clef staff with a 3/4 time signature, containing several whole rests. The lower staff is a bass clef staff with a 3/4 time signature, containing a melodic line with notes, slurs, and some handwritten markings above it.

Handwritten musical notation on a single staff, featuring a treble clef and various notes with slurs and accidentals.

Handwritten musical notation on a single staff, featuring a treble clef and various notes with slurs and accidentals.

Empty musical staves for piano accompaniment, consisting of two staves joined by a brace.

Handwritten musical notation on a single staff, featuring a treble clef and various notes with slurs and accidentals.

semplice

Handwritten musical notation on a single staff, featuring a treble clef and various notes with slurs and accidentals.

semplice

Handwritten musical notation on a single staff, featuring a treble clef and various notes with slurs and accidentals.

dolce espressivo

Handwritten musical notation on a single staff, featuring a bass clef and various notes with slurs and accidentals.

Handwritten musical score for the first system. It consists of three staves: a treble clef staff at the top with a melodic line, a grand staff in the middle with piano accompaniment, and a bass clef staff at the bottom with a bass line. The score includes various musical notations such as notes, rests, and dynamic markings. There are handwritten annotations above the treble staff, including a 'V' and a double bar line. The piano part features chords and arpeggios, while the bass part has a steady accompaniment.

Handwritten musical score for the second system. It continues the piece with three staves: a treble clef staff with a melodic line, a grand staff with piano accompaniment, and a bass clef staff with a bass line. The score includes various musical notations and the instruction "p tranquillo" written in three places. There are handwritten annotations above the treble staff, including a '3', a 'V', and a double bar line. The piano part features chords and arpeggios, while the bass part has a steady accompaniment.

4

Handwritten musical score for the first system. It consists of three staves: a treble clef staff, a bass clef staff, and a grand staff. The music includes various notes, rests, and dynamic markings. The word "dolce" is written in the grand staff. There are also some handwritten annotations like "23" above the bass clef staff.

Handwritten musical score for the second system. It consists of three staves: a treble clef staff, a bass clef staff, and a grand staff. The music includes various notes, rests, and dynamic markings. The word "legato" is written at the end of the first staff. The word "diminuendo" is written in the grand staff. There are also some handwritten annotations like "11 2 13 4" above the bass clef staff. The word "pp" is written in the grand staff.

(non cresc.)

p dolce

legato

Handwritten musical score for the first system. It consists of a vocal line (top staff) and a piano accompaniment (bottom two staves). The vocal line begins with a rest, followed by notes with dynamics *p* and *mf cresc.* leading to a *f* dynamic. The piano accompaniment features complex chordal textures and arpeggiated figures. A dynamic marking *p cresc.* is present in the lower right of the piano part.

Two empty musical staves, likely representing a continuation of the score or a placeholder for another system.

Handwritten musical score for the second system. The vocal line (top staff) features a melodic phrase with dynamics *p dolce* and *mf*. The piano accompaniment (bottom two staves) continues with complex textures, including a section marked *piu mosso*. The system concludes with a large bracketed chord structure in the piano part.

The first system of the handwritten musical score consists of four staves. The top staff is in treble clef and contains a melodic line with various notes, rests, and slurs. The second staff is also in treble clef and contains a series of notes, some with slurs. The third and fourth staves are grouped together in a grand staff (treble and bass clefs) and contain a piano accompaniment with chords and moving lines. There are several dynamic markings, including *mf* and *f*, and some handwritten annotations like '7' and 'n'.

Two empty musical staves, consisting of two five-line staves each, positioned between the first and second systems of the score.

The second system of the handwritten musical score consists of four staves. The top staff is in treble clef and contains a melodic line with various notes, rests, and slurs. The second staff is also in treble clef and contains a series of notes, some with slurs. The third and fourth staves are grouped together in a grand staff (treble and bass clefs) and contain a piano accompaniment with chords and moving lines. There are several dynamic markings, including *mf* and *f*, and some handwritten annotations like '7' and 'n'.

Two empty musical staves, consisting of two five-line staves each, positioned at the bottom of the page.

Handwritten musical score for the first system. It consists of four staves. The top two staves are vocal lines (soprano and alto), and the bottom two are piano accompaniment. The music is in a minor key, indicated by a flat sign in the key signature. The vocal lines feature half notes and quarter notes, with some notes marked with 'x' and 'o'. The piano accompaniment includes chords, a triplet of eighth notes marked with a '3', and various dynamics such as *pp* and *p*.

Two empty musical staves, one above the other, consisting of five-line systems.

Handwritten musical score for the second system. It consists of four staves. The top two staves are vocal lines, and the bottom two are piano accompaniment. The music continues in the same minor key. The vocal lines include the instruction *morendo* and feature half notes and quarter notes. The piano accompaniment includes chords, a triplet of eighth notes, and dynamics such as *pp* and *diminuendo*.

Two empty musical staves, one above the other, consisting of five-line systems.

Handwritten musical score for the first system. It consists of four staves. The top staff is a vocal line with notes and rests, marked with *pp*. The second staff is a bass line with notes and rests. The third and fourth staves are piano accompaniment, with the right hand playing a melodic line and the left hand playing chords. Dynamic markings include *ppp* and *p*. There are also some handwritten annotations like *poco* and *ppp* with arrows indicating dynamics.

Handwritten musical score for the second system. It consists of four staves. The top staff is a vocal line with notes and rests, marked with *p* and *crescendo*. The second staff is a bass line with notes and rests, marked with *p* and *crescendo*. The third and fourth staves are piano accompaniment, with the right hand playing a melodic line and the left hand playing chords. Dynamic markings include *p*, *crescendo*, and *poco*. There are also some handwritten annotations like *poco* and *crescendo* with arrows indicating dynamics.

Handwritten musical score for the first system. It consists of a treble staff and a bass staff, with piano accompaniment below. The treble staff contains a melodic line with notes, slurs, and dynamic markings. The bass staff contains a similar melodic line. The piano accompaniment is written in a grand staff format (treble and bass clefs). The score includes dynamic markings such as *ff*, *poco*, and *molto*. There are also handwritten annotations like 'a' and 'V'.

Handwritten musical score for the second system. It continues the piece with a treble staff, a bass staff, and piano accompaniment. The treble staff features a melodic line with slurs and dynamic markings like *fff* and *poco dim*. The bass staff has a similar melodic line. The piano accompaniment is more complex, with many notes and slurs. The score includes dynamic markings such as *fff* and *poco dim*. There are also handwritten annotations like 'al' and 'V'.

accelerando ----- *al Più mosso.*

This system contains three staves of handwritten musical notation. The top staff is in treble clef, the middle in bass clef, and the bottom is a grand staff for piano. The tempo changes from *accelerando* to *al Più mosso.* with a dashed line. Time signatures $\frac{2}{4}$ and $\frac{3}{4}$ are indicated. Dynamic markings include *sf* (sforzando) and *ff* (fortissimo). There are also some handwritten numbers like '1' and '3' above notes.

This system contains three staves of handwritten musical notation. The top two staves are for a melodic instrument (likely violin or flute), and the bottom is a grand staff for piano. The piano part includes the marking *ff legato*. There are also *sf* markings. The system concludes with a double bar line and the word *otto* written vertically below the piano staff.

Handwritten musical score for the first system. It consists of three staves: two vocal staves (treble and bass clef) and a piano accompaniment staff (grand staff). The vocal lines feature melodic phrases with various ornaments and dynamics, including *ff sempre* and *f acc*. The piano accompaniment includes chords and arpeggiated figures, with dynamic markings such as *sf*, *sf sf*, *ff*, and *fff*. Time signatures include $\frac{3}{8}$, $\frac{4}{4}$, and $\frac{3}{8}$. There are also some handwritten annotations like *acc* and *3*.

Handwritten musical score for the second system. It continues the vocal and piano parts from the first system. The vocal lines show further melodic development with dynamics like *mf acc* and *ff*. The piano accompaniment features complex rhythmic patterns, including triplets and sixteenth notes, with dynamic markings such as *mf acc* and *ff*. Time signatures include $\frac{3}{8}$, $\frac{2}{4}$, and $\frac{3}{8}$. There are also some handwritten annotations like *acc* and *3*.

6X

Andante tranquillo.

3/4

sf sf

p dolce

p dolce

mf cantabile

mf cantabile

Handwritten musical score for the first system. It consists of two vocal staves and a piano accompaniment. The top vocal staff begins with a fermata and the instruction "p conore". The music features melodic lines with slurs and dynamic markings including "pp", "crescendo", and "poco". The piano accompaniment is written in a grand staff with chords and arpeggiated figures. A dashed line indicates a dynamic or performance boundary.

Handwritten musical score for the second system. It continues the piece with two vocal staves and piano accompaniment. The top vocal staff includes a fermata and a "V" marking. The middle vocal staff has fingerings written as "1 2", "1 1 2 3 1 2 3 2 1". The piano accompaniment includes a "ff" marking and a dashed line. The score concludes with a final chord in the piano part.

Handwritten musical score for the first system. It consists of two vocal staves (treble and bass clef) and a piano accompaniment (grand staff). The vocal lines feature melodic phrases with slurs and accidentals (sharps and flats). The piano accompaniment includes chords and arpeggiated figures. Handwritten annotations include "ff sonore" above the vocal staves and "sempre ff" above the piano accompaniment.

Handwritten musical score for the second system. It continues the vocal and piano parts from the first system. The vocal lines show further melodic development with slurs and accidentals. The piano accompaniment features sustained chords and arpeggiated patterns. Handwritten annotations include "3 1 3 9" above the bass vocal staff, indicating a triplet or specific fingering.



This system of handwritten musical notation consists of three staves. The top staff is in treble clef, the middle in bass clef, and the bottom is a grand staff. The music features various notes, rests, and slurs. A crescendo hairpin is present in the first two staves. Dynamic markings include *dolce* in the first staff, *mf* in the second and third staves, and *mf legato* in the grand staff. The key signature has one sharp (F#) and the time signature is 4/4.

This system continues the piece with three staves. The notation includes treble, bass, and grand staves. It features a variety of rhythmic patterns and melodic lines. A dynamic marking of *mf* is visible in the grand staff. The key signature remains one sharp (F#) and the time signature is 4/4.

Handwritten musical score for the first system. It consists of a vocal line (treble and bass clefs) and a piano accompaniment (grand staff). The vocal line includes notes with slurs and fingerings (1, 2, 4). The piano accompaniment features chords and arpeggiated figures. Performance markings include *pp* and *dolce legato*.

Handwritten musical score for the second system. It continues the vocal and piano parts from the first system. The vocal line has slurs and fingerings (3, 3, 2). The piano accompaniment continues with complex chordal textures and arpeggios.

Handwritten musical score for two systems of staves. The first system consists of a single treble clef staff with a melodic line featuring slurs and various accidentals. The second system consists of a grand staff (treble and bass clefs) with a more complex accompaniment. The notation includes slurs, ties, and dynamic markings such as *pp* and *p*. There are also some handwritten annotations in the second system, including a large 'V' and some scribbles.

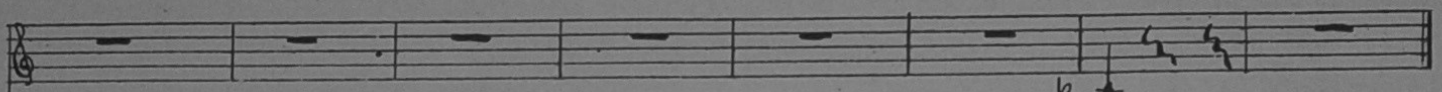
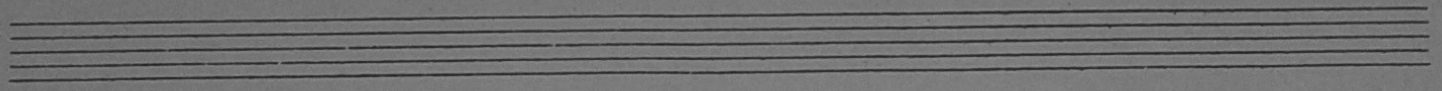
Handwritten musical score for two systems of staves. The first system consists of a single treble clef staff with a melodic line featuring slurs and various accidentals. The second system consists of a grand staff (treble and bass clefs) with a more complex accompaniment. The notation includes slurs, ties, and dynamic markings such as *pp* and *p*. There are also some handwritten annotations in the second system, including a large 'V' and some scribbles.

Handwritten musical score for the first system. It consists of four staves. The top two staves are for a vocal line, with a treble clef on the first and a bass clef on the second. The bottom two staves are for a piano accompaniment, with a grand staff (treble and bass clefs). The music includes various notes, rests, and dynamic markings such as *pp* and *so.* (sotto voce). There are also some handwritten annotations and slurs.

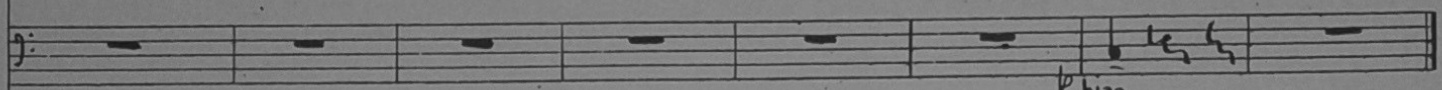
Handwritten musical score for the second system. It consists of four staves. The top two staves are for a vocal line, with a treble clef on the first and a bass clef on the second. The bottom two staves are for a piano accompaniment, with a grand staff (treble and bass clefs). The music includes various notes, rests, and dynamic markings such as *pp* and *so.* (sotto voce). There are also some handwritten annotations and slurs.

Handwritten musical score for the first system. It consists of two staves: a treble clef staff and a bass clef staff. The treble staff contains several measures with notes, some marked with a double flat (*bb*) and a slur. The bass staff contains notes with slurs and dynamic markings such as *pp* and *bb*. Below the bass staff, there are guitar chord diagrams for each measure, showing fingerings on the strings.

Handwritten musical score for the second system. It consists of two staves: a treble clef staff and a bass clef staff. The treble staff contains several measures with notes, some marked with a double flat (*bb*) and a slur. The bass staff contains notes with slurs and dynamic markings such as *ppp*, *pp*, and *p*. Below the bass staff, there are guitar chord diagrams for each measure, showing fingerings on the strings.



p pizz.



p pizz.

A piano accompaniment section for guitar, consisting of a grand staff with a treble and bass clef. The treble clef part features a melodic line with notes and rests, including a half note with a flat (Bb) and a fermata. The bass clef part features a bass line with notes and rests, including a half note with a flat (Bb) and a fermata. There are two instances of the text "pp" (pianissimo) written above the staff. A double slash is drawn over the staff in the middle section, indicating a change in dynamics or a specific performance instruction.

