

Violoncello

Begrüßung

Humboldt-Kantate

Ludwig Rellstab

MWV D 2
No. 1 Chor

Felix Mendelssohn Bartholdy
(1809-1847)

Andante con moto

7

11

25

31

37

42

47

51

pp *f* *f* *p*

65 *a3* **Allegro vivace**
p

72

78

84 *pp*

89 *cresc. molto*

95 **attacca No. 2**
f cresc. *ff*

No. 2 Chor

Allegro di molto

ff

107

113

118



124



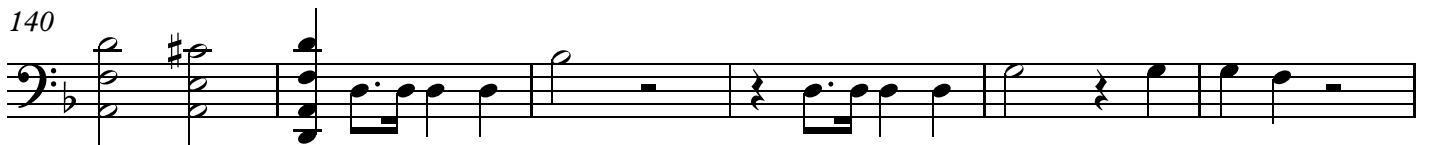
130



135



140



146



151



155

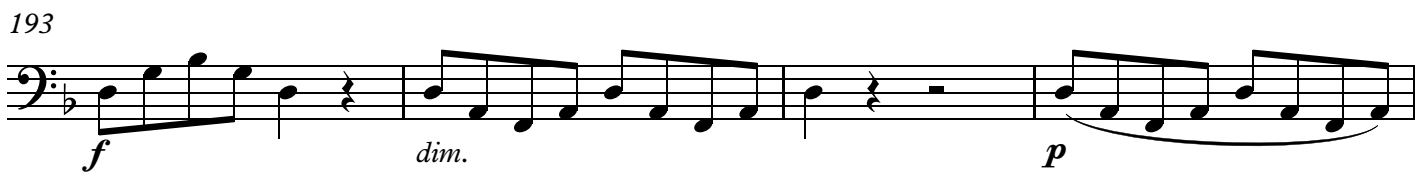
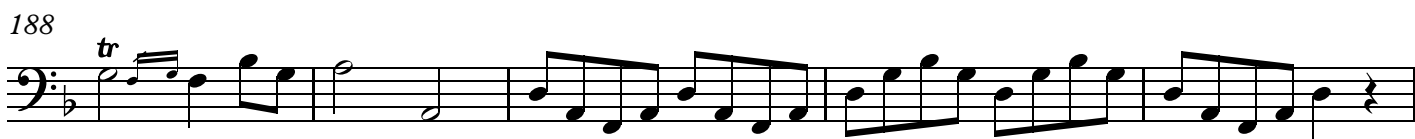


159

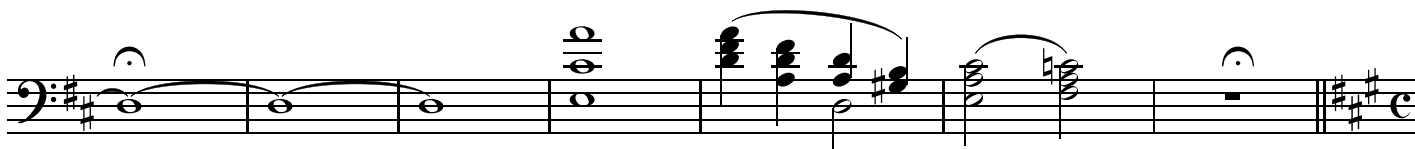


163





No. 3 Recit.



Violoncello
No. 4 Arioso

Andante

p

< >

This staff contains measures 205 to 214. It begins with a piano (*p*) dynamic and a long slur over the first six measures. A hairpin (< >) is placed below the staff between measures 210 and 211.

215

sf *p*

This staff contains measures 215 to 221. It features a double bar line with a '2' above it in measure 218, indicating a second ending. Dynamics include *sf* and *p*.

222

p *f* *p*

This staff contains measures 222 to 225. Dynamics include *p*, *f*, and *p*.

226

This staff contains measures 226 to 228. It features a slur over the first two measures and a dynamic marking of *p*.

229

cresc.

This staff contains measures 229 to 234. It ends with a *cresc.* marking.

235

f *p* *pp*

This staff contains measures 235 to 239. Dynamics include *f*, *p*, and *pp*.

240

f *p* *f*

This staff contains measures 240 to 247. Dynamics include *f*, *p*, and *f*. It ends with a double bar line and a 6/8 time signature.

No. 5 Tenor solo und

Allegro vivace

p

This staff contains measures 248 to 257. It begins with a piano (*p*) dynamic and a slur over the first four measures.

248

This staff contains measures 248 to 257. It features a series of chords and a dynamic marking of *p*.

253

sempre pp

259

unis.
f

264

pizz.

271

arco
p *f*

278

p *p*

285

f *p*

294

f *p*

301

3

309

3

317

f *p* *cresc.*

324

f 3 rit. 2

Violoncello
No. 7 Chor

18

416

p

418

cresc.

421

mf *cresc.*

424

ff

429

436

Allegro vivace

f *f*

441

444

448

453

456

460

466

470

473

477

481

485

Violoncello

490

496

501

508

ff

513

ff

518

522

526

f

531

ff

536