

Horn 2 in Bb (low)  
TRANS FOR F horn

# Overture to "Etoile du Nord"

G. Meyerbeer

Tempo di marcia maestosa (metronome de Maelzel: ♩ = 80)

5 A 4 B solo 6

*pp*

C

*ff*

D

22

E F

3

*p* *sf*

G

36

*sf* *sf* *molto cresc.* *ff*

H

40

Pressez un peu (♩ = 88)

*ff*

I J

45

K L

55 **3** *[p]*

**M** **N** *pp* *f* *pp* **2**

74 *[légèrement]* **O**

80 *molto cresc.* *ff* **P**

**Q** *ff* **R**

90 *ff* **S**

97 *pp* *pp* **T** **3** **2**

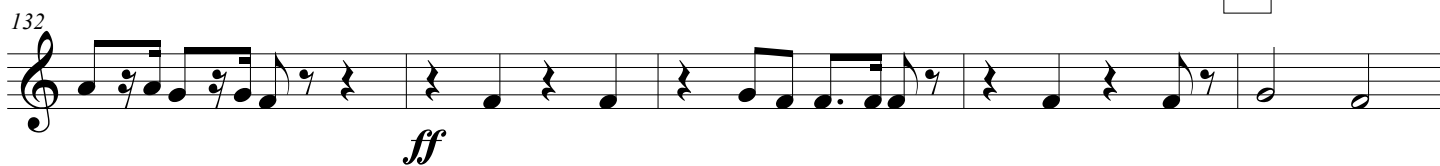
**U** **V** **W** **X** *ppp* *pppp*

Tous les instruments doivent jouer aussi  
Piano que possible (en guise d'écho)

**Y** *p* *ff* **4**

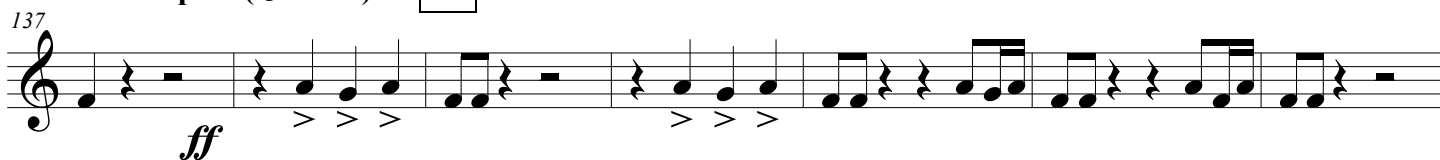
124

Z



Pressez un peu (♩ = 104)

AA



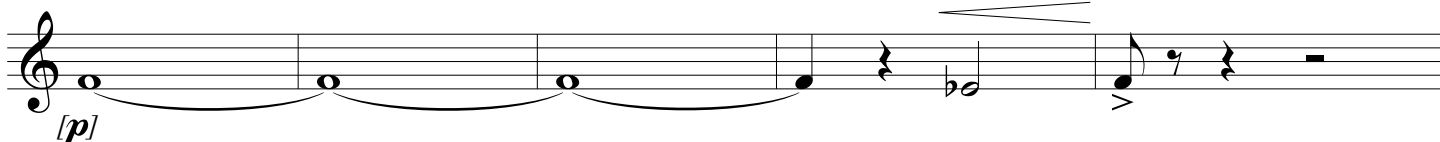
BB

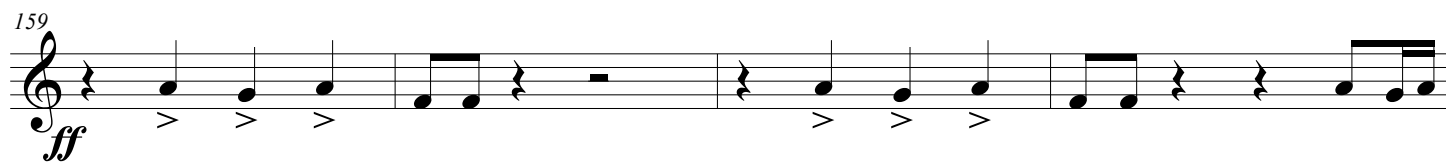


CC



DD





**EE**



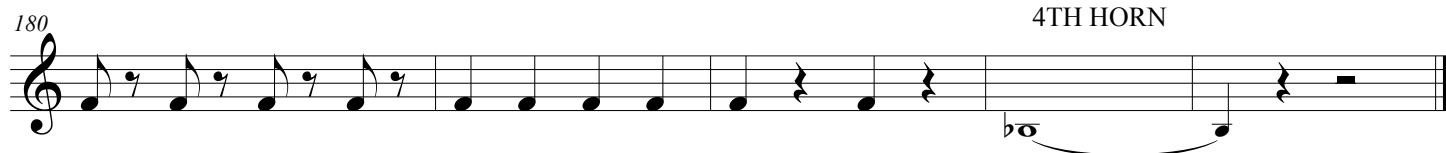
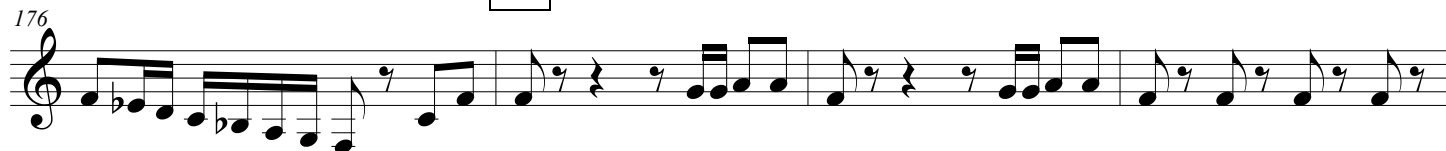
**FF**



**GG**



**HH**



4TH HORN