

# PRELUDE in D MAJOR

(from: *Rodelinda*, Act I, Sc.10, HWV 19)

for Trumpet and Organ

Score (02':32'')

Georg Friedrich Händel (1685 - 1759)

Arr. Michel Rondeau

Allegro moderato ♩ = 90

Trumpet in C

Organ

This system shows the first three measures of the score. The Trumpet in C part is mostly silent, with rests. The Organ part features a rhythmic accompaniment with chords and moving lines in both the treble and bass staves. The key signature is D major (two sharps) and the time signature is common time (C).

C Tpt.

Org.

This system covers measures 4 to 6. The C Trumpet part begins with a melodic line starting on the fourth measure. The Organ part continues with its accompaniment. Measure numbers 4, 5, and 6 are indicated at the start of their respective lines.

C Tpt.

Org.

This system covers measures 7 to 9. The C Trumpet part has a melodic line with some rests. The Organ part continues. Measure numbers 7, 8, and 9 are indicated. Section symbols (§) are placed above the organ staff at measures 8 and 9.

C Tpt.

Org.

This system covers measures 10 to 12. The C Trumpet part has a melodic line with rests. The Organ part continues. Measure numbers 10, 11, and 12 are indicated.

PRELUDE in D MAJOR - HWV 19 - Händel - Score

2  
13

C Tpt.

Org.

This system contains measures 2 through 13. The C Trumpet part begins with a whole rest in measure 2, followed by a melodic line of eighth and sixteenth notes. The Organ part features a rhythmic accompaniment of eighth notes in the right hand and a bass line of eighth notes in the left hand. Measure 13 ends with a fermata over the final chord.

16

C Tpt.

Org.

This system contains measures 16 through 19. The C Trumpet part has a long melodic phrase starting with a half note, followed by a series of eighth and sixteenth notes. The Organ part continues with its accompaniment, featuring chords in the right hand and a steady bass line in the left hand.

19

C Tpt.

Org.

This system contains measures 19 through 23. The C Trumpet part has a trill (tr) in measure 19, followed by a melodic line. The Organ part features a more active right hand with sixteenth-note patterns and a bass line with eighth notes.

23

C Tpt.

Org.

This system contains measures 23 through 26. The C Trumpet part has a continuous melodic line of eighth and sixteenth notes. The Organ part features a rhythmic accompaniment with chords in the right hand and eighth notes in the left hand.

PRELUDE in D MAJOR - HWV 19 - Händel - Score

26

C Tpt.

Org.

29

C Tpt.

Org.

32

C Tpt.

Org.

35

C Tpt.

Org.

PRELUDE in D MAJOR - HWV 19 - Händel - Score

4  
38

C Tpt.

Org.

38

42

C Tpt.

Org.

42

45

C Tpt.

Org.

45

48

C Tpt.

Org.

Fine

48

PRELUDE in D MAJOR - HWV 19 - Händel - Score

Adagio

5

51

C Tpt.

Org.

Detailed description: This system contains measures 51, 52, and 53. The C Tpt. part (top staff) features a melodic line with eighth-note patterns and rests. The Organ part (bottom staves) provides harmonic support with chords and moving lines in both treble and bass clefs. The key signature is D major (two sharps).

54

*a tempo*

C Tpt.

Org.

D.S. al Fine

D.S. al Fine

Detailed description: This system contains measures 54, 55, 56, and 57. The C Tpt. part (top staff) has a few notes in measure 54 followed by rests. The Organ part (bottom staves) continues with a more active melodic line. The tempo marking 'a tempo' is present above the C Tpt. staff. The instruction 'D.S. al Fine' appears at the end of both staves in measure 57. The key signature remains D major.

# PRELUDE in D MAJOR

(from: *Rodelinda*, Act I, Sc.10, HWV 19)

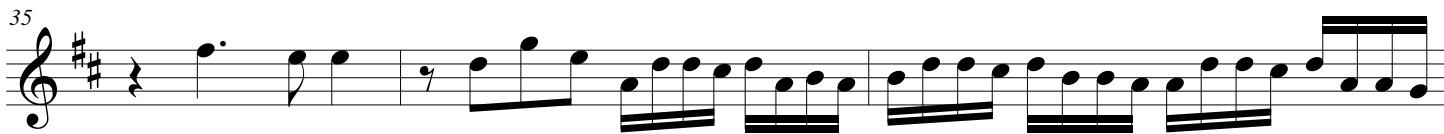
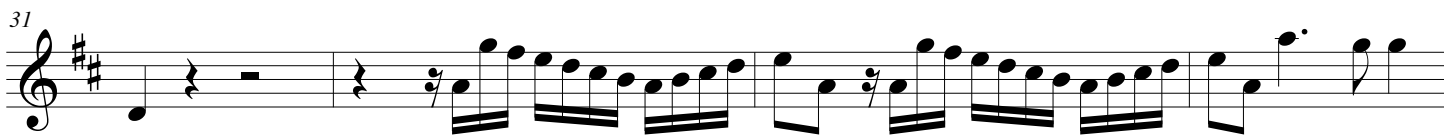
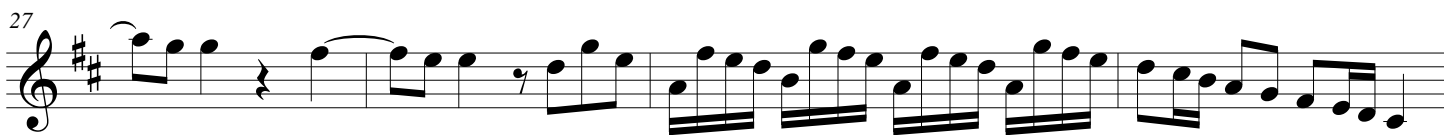
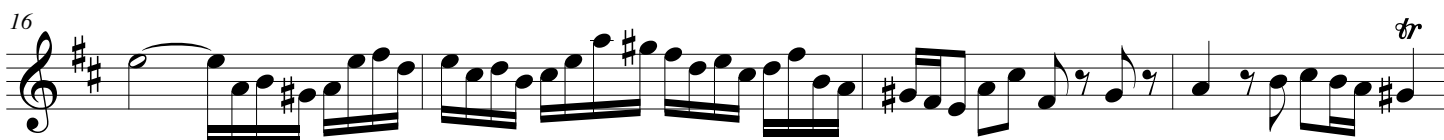
## Trumpet in C

for Trumpet and Organ

Georg Friedrich Händel (1685 - 1759)

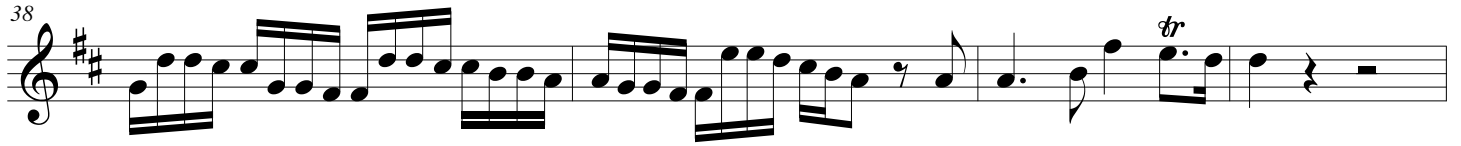
Arr. Michel Rondeau

Allegro moderato  $\text{♩} = 90$



PRELUDE in D MAJOR - HWV 19 - Händel - C Trumpet

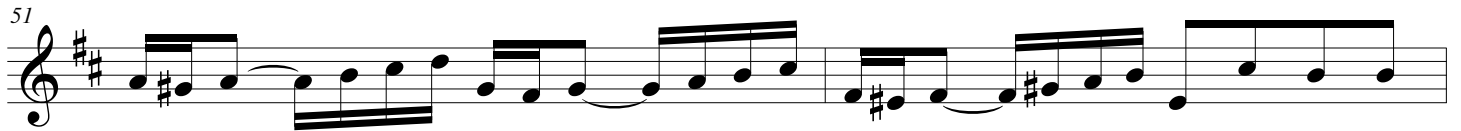
38 *tr*



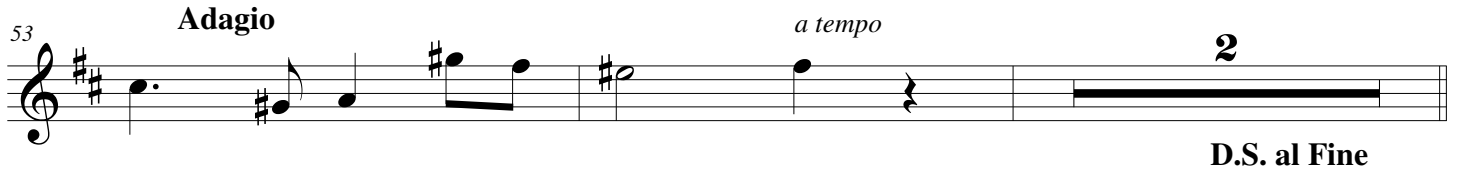
42 **6** *Fine*



51



53 **Adagio** *a tempo* **2** **D.S. al Fine**



# PRELUDE in D MAJOR

(from: *Rodelinda*, Act I, Sc.10, HWV 19)

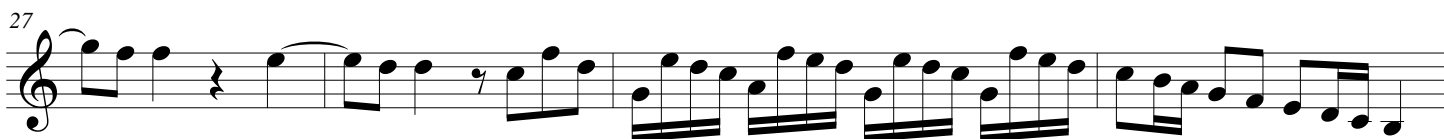
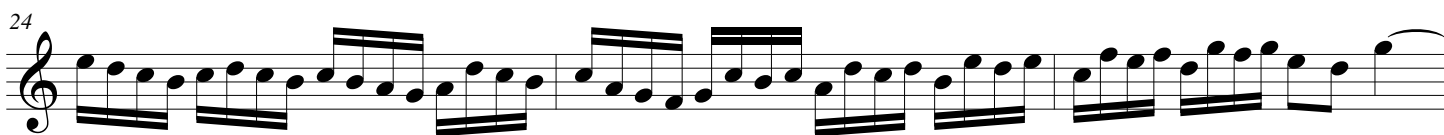
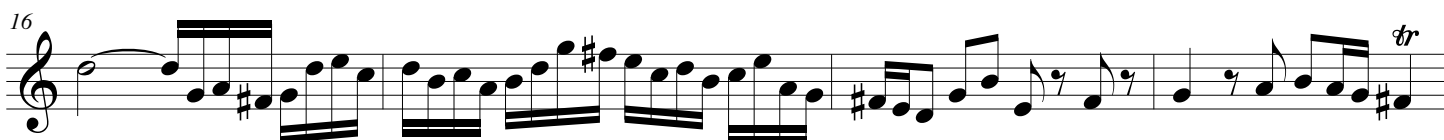
for Trumpet and Organ

## Trumpet in D

Georg Friedrich Händel (1685 - 1759)

Arr. Michel Rondeau

Allegro moderato  $\text{♩} = 90$



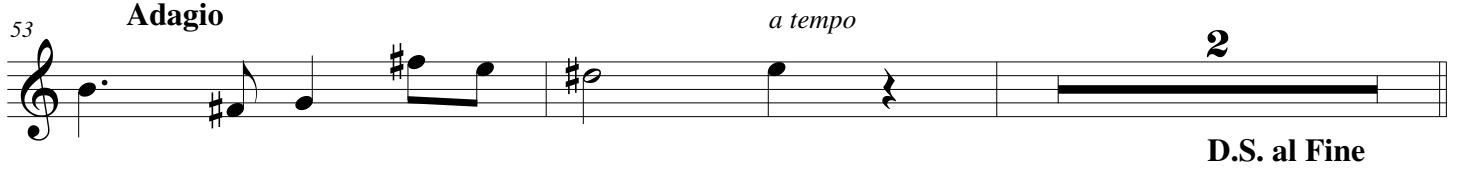


PRELUDE in D MAJOR - HWV 19 - Händel - D Trumpet

38  Musical notation for measures 38-41. Measure 38 starts with a treble clef and a key signature of one sharp (F#). The melody consists of eighth-note patterns. Measure 41 ends with a fermata over a dotted quarter note and a dynamic marking of *tr.*

42  Musical notation for measures 42-50. Measure 42 begins with a six-measure rest, a first ending bracket, and a fermata. Below the rest is the word "Fine". The melody continues with eighth-note patterns and includes a key signature change to two sharps (F# and C#) in measure 45.

51  Musical notation for measures 51-52. The melody continues with eighth-note patterns and includes a key signature change to one sharp (F#) in measure 52.

53  Musical notation for measures 53-56. Measure 53 is marked *Adagio*. The melody consists of quarter notes. Measure 55 is marked *a tempo*. Measure 56 ends with a fermata and a dynamic marking of *2*. Below the staff, the instruction "D.S. al Fine" is written.

# PRELUDE in D MAJOR

(from: *Rodelinda*, Act I, Sc.10, HWV 19)

for Trumpet and Organ

Georg Friedrich Händel (1685 - 1759)

Arr. Michel Rondeau

## Organ

Trumpet in C

Organ

Allegro moderato  $\text{♩} = 90$

C Tpt.

Org.

C Tpt.

Org.

C Tpt.

Org.

PRELUDE in D MAJOR - HWV 19 - Händel - Organ

2

C Tpt.

13

Org.

Detailed description: This system covers measures 13 to 15. The C Trumpet part (top staff) begins with a whole rest in measure 13, followed by a melodic line in measures 14 and 15. The Organ part (bottom two staves) features a rhythmic accompaniment of eighth notes in the right hand and quarter notes in the left hand. Measure 15 includes a fermata over the final chord.

C Tpt.

16

Org.

Detailed description: This system covers measures 16 to 18. The C Trumpet part (top staff) has a long note in measure 16, followed by a melodic line in measures 17 and 18. The Organ part (bottom two staves) continues with the eighth-note accompaniment in the right hand and quarter notes in the left hand. Measure 18 ends with a fermata.

C Tpt.

19

Org.

Detailed description: This system covers measures 19 to 22. The C Trumpet part (top staff) has a trill (tr) in measure 19, followed by rests in measures 20 and 21, and a melodic line in measure 22. The Organ part (bottom two staves) continues with the eighth-note accompaniment in the right hand and quarter notes in the left hand. Measure 22 ends with a fermata.

C Tpt.

23

Org.

Detailed description: This system covers measures 23 to 25. The C Trumpet part (top staff) has a melodic line in measure 23, followed by rests in measures 24 and 25. The Organ part (bottom two staves) continues with the eighth-note accompaniment in the right hand and quarter notes in the left hand. Measure 25 ends with a fermata.

PRELUDE in D MAJOR - HWV 19 - Händel - Organ

C Tpt.

Org.

Measures 26-28 of the organ prelude. The C Trumpet part (top staff) begins with a treble clef, a key signature of two sharps (D major), and a common time signature. It features a melodic line with eighth-note patterns and rests. The Organ part (bottom two staves) consists of a right-hand staff with a treble clef and a left-hand staff with a bass clef, both in D major. The organ accompaniment includes chords and moving lines in both hands.

C Tpt.

Org.

Measures 29-31 of the organ prelude. The C Trumpet part continues with a melodic line of eighth notes. The Organ part maintains its accompaniment, with the right hand playing chords and the left hand playing a steady eighth-note bass line.

C Tpt.

Org.

Measures 32-34 of the organ prelude. The C Trumpet part features a melodic line with some rests and eighth-note patterns. The Organ part continues with its characteristic accompaniment, showing some rhythmic variation in the right hand.

C Tpt.

Org.

Measures 35-37 of the organ prelude. The C Trumpet part has a melodic line with eighth-note patterns. The Organ part concludes this section with chords in the right hand and a steady bass line in the left hand.

PRELUDE in D MAJOR - HWV 19 - Händel - Organ

4  
38

C Tpt.

Org.

38

42

C Tpt.

Org.

42

45

C Tpt.

Org.

45

48

C Tpt.

Org.

Fine

48

Fine

PRELUDE in D MAJOR - HWV 19 - Händel - Organ

C Tpt.

51

Org.

Adagio

C Tpt.

54

Org.

*a tempo*

D.S. al Fine

D.S. al Fine