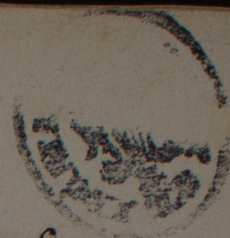


Messa v. St. Bruckner.



Andante. *Fagotte* <sup>mo</sup>

*Fagotto*. Musical notation on a staff with dynamics *p* and *ff*, and a fermata.

Musical notation on a staff with dynamics *ff* and a fermata.

Musical notation on a staff with dynamics *mp* and *p*, and a fermata.

Musical notation on a staff with dynamics *ff* and *p*, and a fermata.

Musical notation on a staff with dynamics *p* and *ff*, and a fermata.

Musical notation on a staff with a fermata.

*Allegro*. Musical notation on a staff with dynamics *ff* and a fermata.

Musical notation on a staff with dynamics *ff* and a fermata.

Musical notation on a staff with dynamics *ff* and a fermata.

Musical notation on a staff with dynamics *ff* and a fermata.

*St. Br.*



11.

Handwritten musical notation on a single staff, featuring various rhythmic values and accidentals.

10.

Handwritten musical notation on a single staff, starting with a double bar line and a fermata.

*Andante*  
*Qui tollis.*

Handwritten musical notation for "Qui tollis" in a slow tempo, featuring a large note with a fermata.

*Allegro*  
*Quoniam.*

Handwritten musical notation for "Quoniam" in a fast tempo, starting with a fermata.

Handwritten musical notation on a single staff, featuring rhythmic patterns and a fermata.

Handwritten musical notation on a single staff, featuring rhythmic patterns and a fermata.

*Allo*

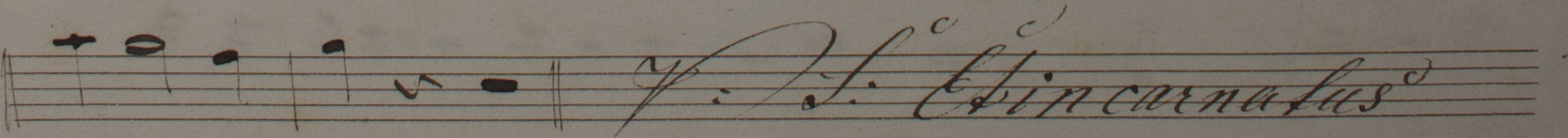
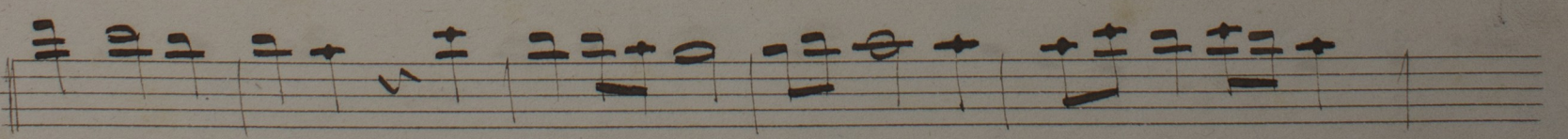
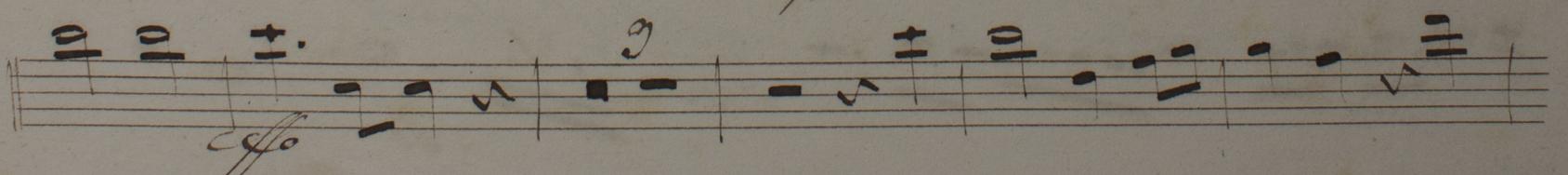
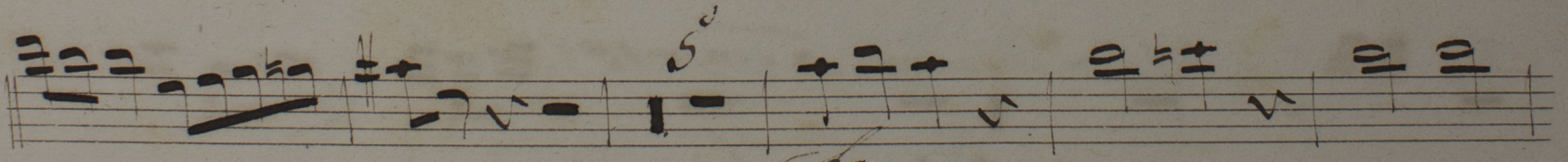
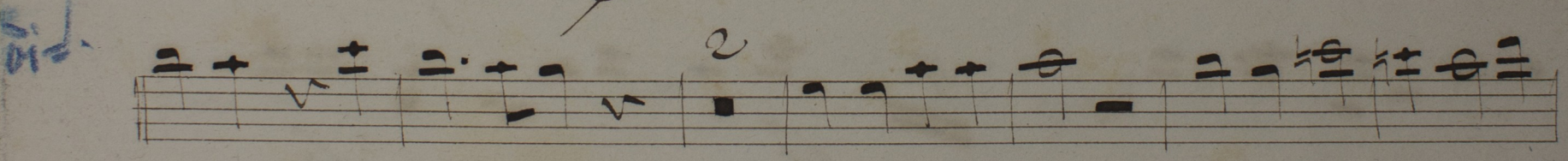
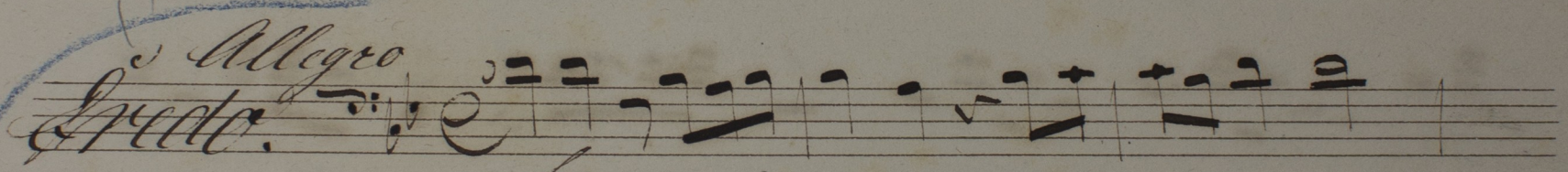
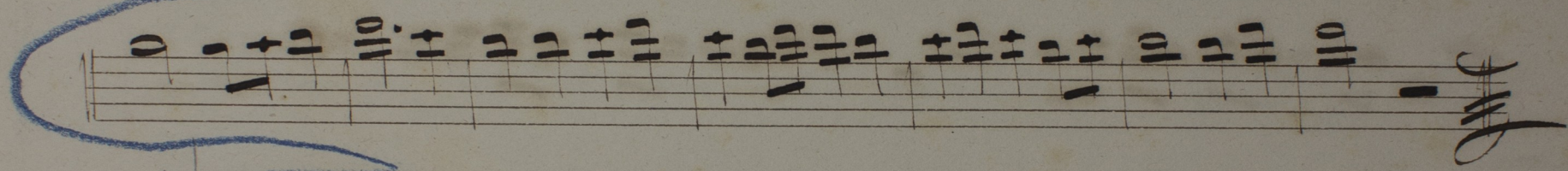
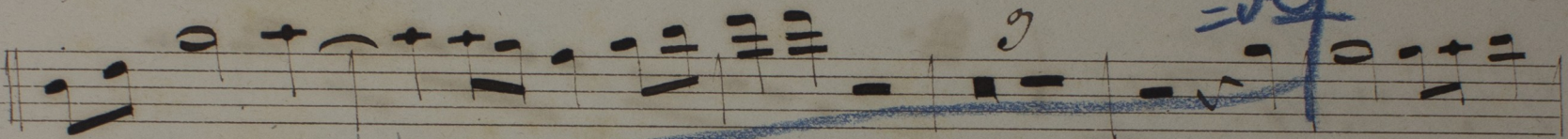
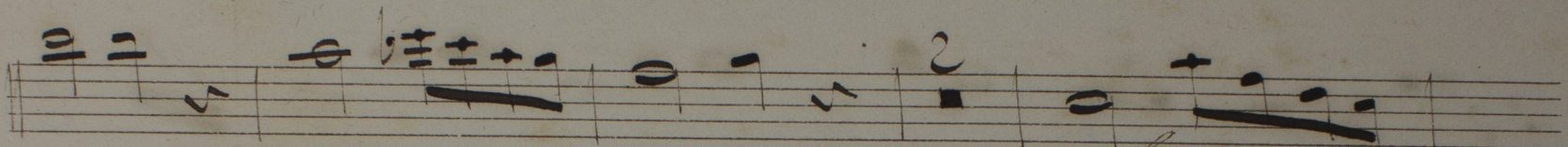
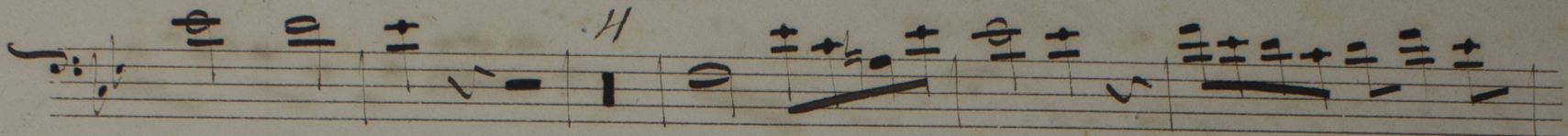
Handwritten musical notation on a single staff, featuring rhythmic patterns and a fermata.

Handwritten musical notation on a single staff, featuring rhythmic patterns and a fermata.

Handwritten musical notation on a single staff, featuring rhythmic patterns and a fermata.

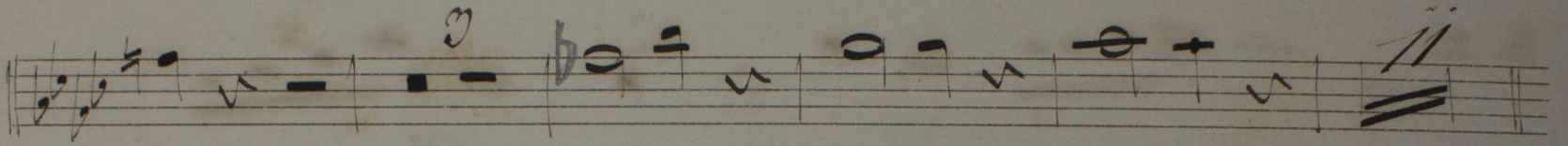
Handwritten musical notation on a single staff, featuring rhythmic patterns and a fermata.



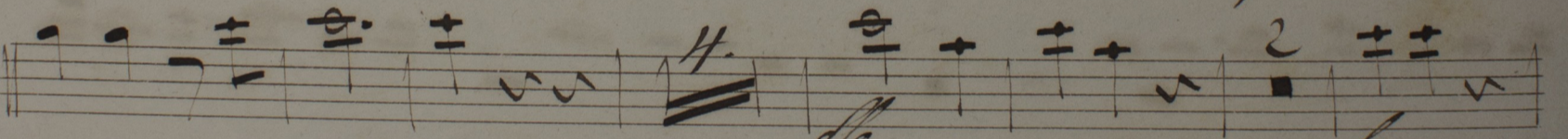
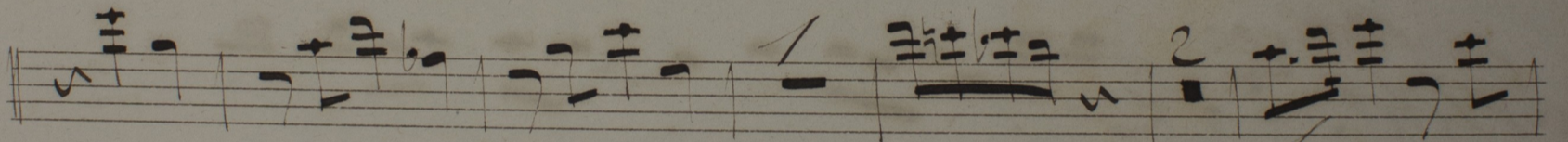
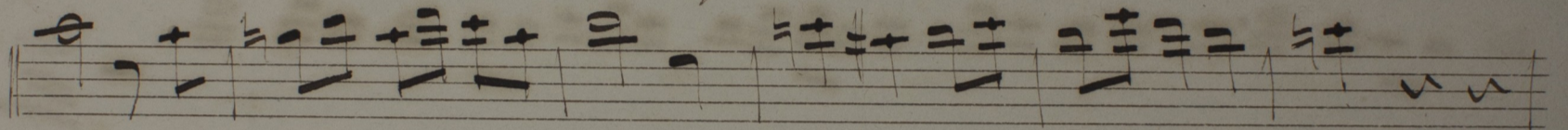




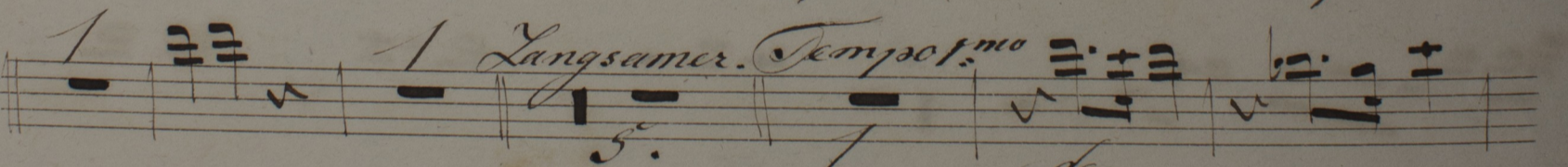
*Adagio* 12.  
*Et incarnatus est.*



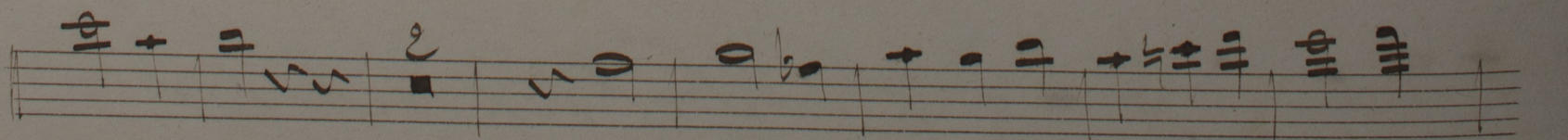
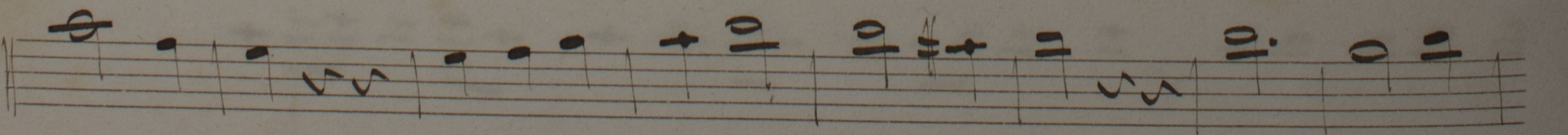
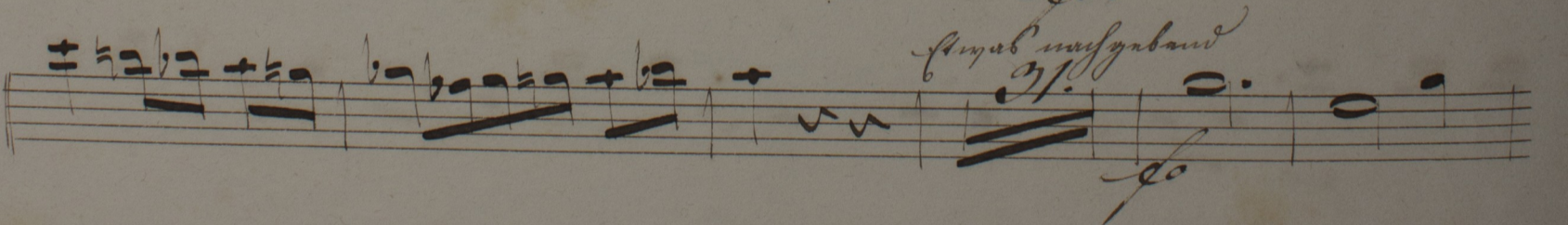
*Allegro.* 11 110.  
*Et surrexit.*



1 1 *Langsamer. Tempo 1<sup>mo</sup>* 5. 1



*Amab. musyaband* 31.





Musical staff with treble clef, key signature of two sharps (F# and C#), and a double bar line.

*Allegro mod<sup>to</sup>*  
*Andam.*

Musical staff with treble clef, key signature of two sharps, and notes with fingerings 3, 4, 5, 6.

*f<sup>mo</sup>*  
*ff.*

Musical staff with treble clef, key signature of two sharps, and notes with fingerings 4 and 5.

Musical staff with treble clef, key signature of two sharps, and a series of sixteenth notes.

Musical staff with treble clef, key signature of two sharps, and notes with a first ending bracket.

Musical staff with treble clef, key signature of two sharps, and a series of sixteenth notes.

*f<sup>mo</sup>*  
*ff.*

Musical staff with treble clef, key signature of two sharps, and notes with a first ending bracket.

*f<sup>mo</sup>*

Musical staff with treble clef, key signature of two sharps, and notes with a first ending bracket.

*ff.*

Musical staff with treble clef, key signature of two sharps, and notes with a first ending bracket.

*Y. S. Sanctus.*



*Moderato. 2*  
*Sanctus.* *f.* *ff* *decres.*

*crescendo* *decres.*

*cres.* *ff*

*ff* *fme*

*Moderato*  
*Benedictus.* *ff*



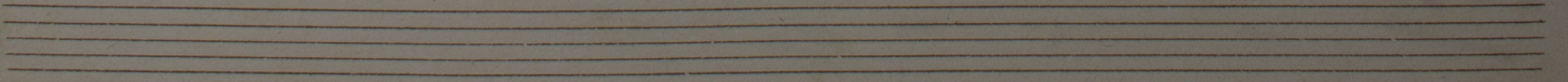
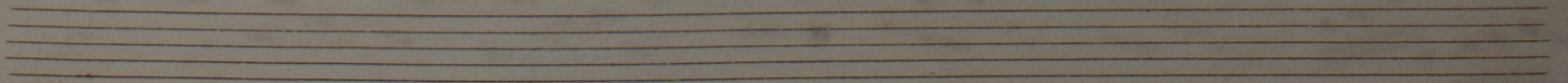
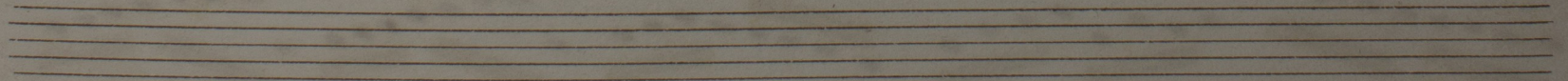
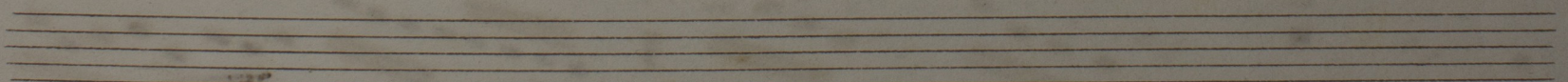
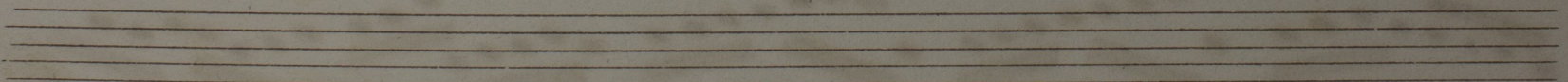
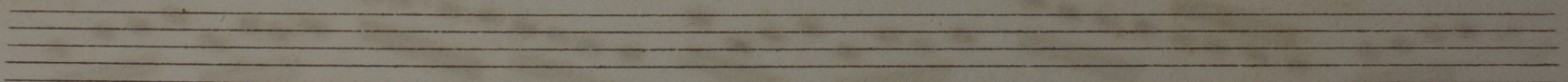
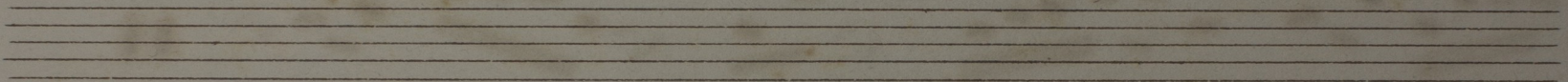
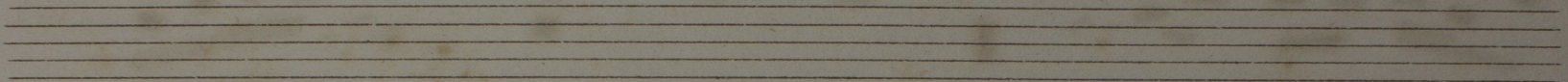
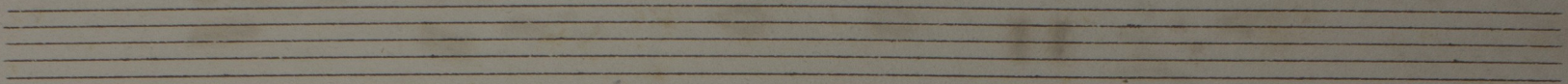
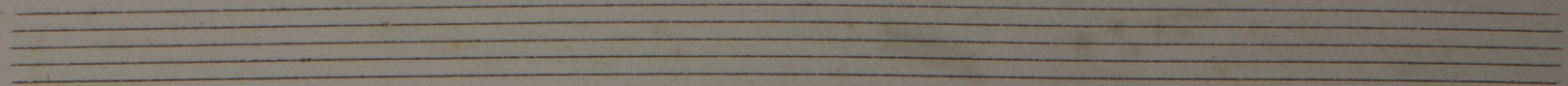
*Adagio*  
 Agnus dei

*Allegro*  
 Dona

*Solo*

St. glorion am 4./V 1932  
 (Benediktenerfestwoche) Hansen







Mosé v. A. Bruckner.



*Andante*

Fagotte II<sup>do</sup>

*Fagotto*

Handwritten musical notation on a single staff, starting with a treble clef and a key signature of one flat. It includes dynamic markings *p* and *pp*, and a fermata over a measure.

Handwritten musical notation on a single staff, featuring a *pp* dynamic marking and a fermata.

Handwritten musical notation on a single staff, including a fermata and a measure with a double bar line.

Handwritten musical notation on a single staff, concluding with a double bar line and a fermata.

*Allo*

*Alpina*

Handwritten musical notation on a single staff, starting with a treble clef and a key signature of one flat. It includes a dynamic marking *Lo*.

Handwritten musical notation on a single staff, including a dynamic marking *Lo*.

Handwritten musical notation on a single staff.

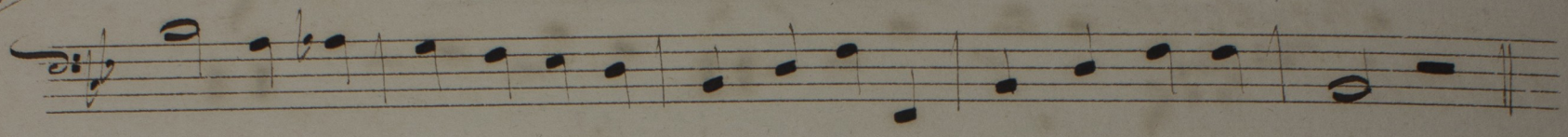
Handwritten musical notation on a single staff, including a dynamic marking *Lo*.

Handwritten musical notation on a single staff, including a dynamic marking *Lo*.

Handwritten musical notation on a single staff, concluding with a double bar line and a fermata.



10.



*Andante*  
*Qui tollis.*  $\text{E}^{\flat} \text{F} \text{G}$   $\frac{3}{4}$   $\frac{33}{}$

*Andante. Allegro.*  
*Quoniam*  $\text{E}^{\flat} \text{F} \text{G}$  *mf.*

*mf.*  $\frac{2}{}$   $\frac{11}{}$  *mf.*

*So*

*Allo*  
*Solo*  
*mf.*  
*alleg.*

*mf.*

*So*

$\frac{5}{}$

$\frac{11}{}$



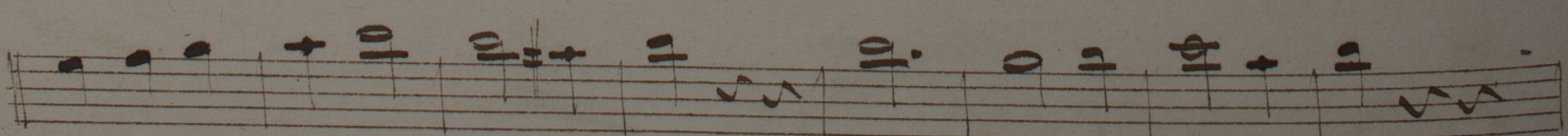
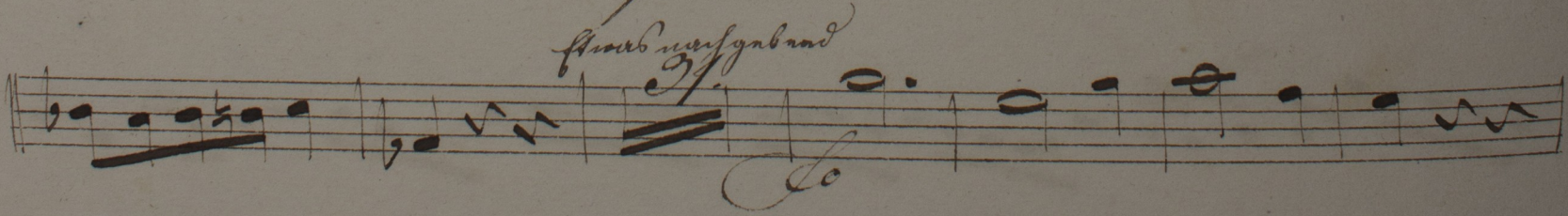
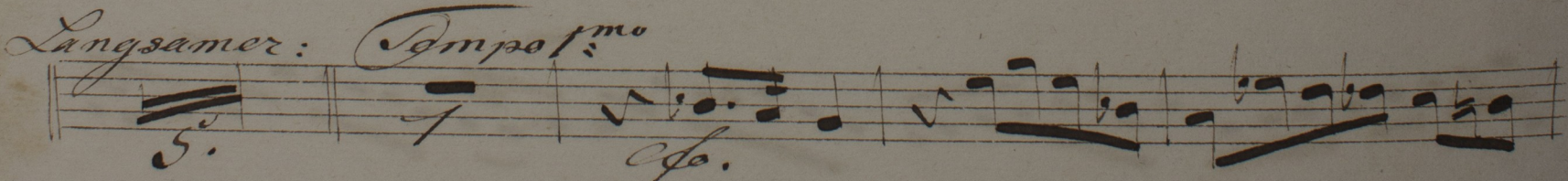
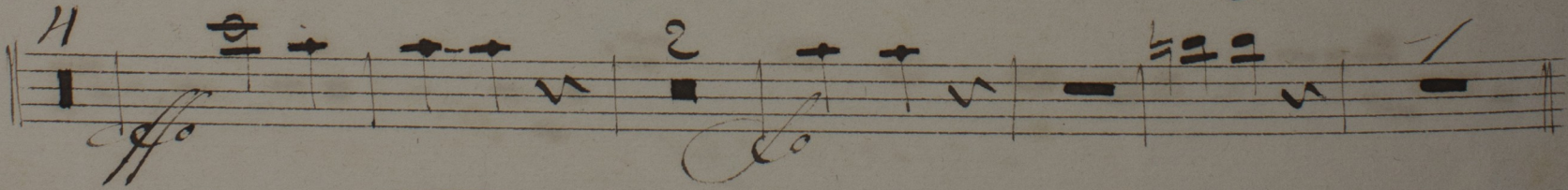
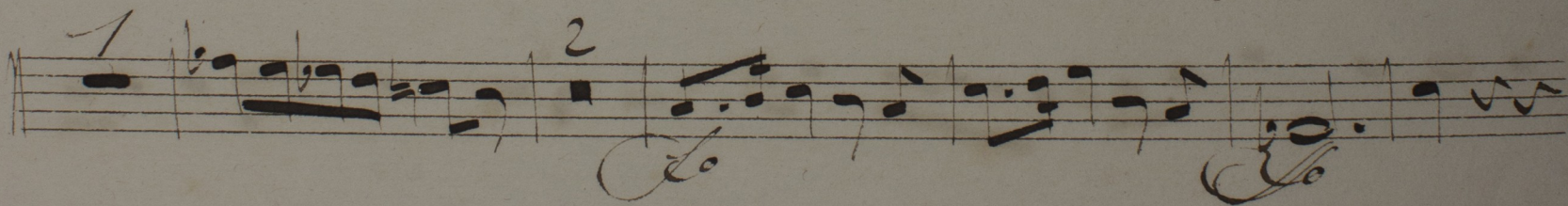
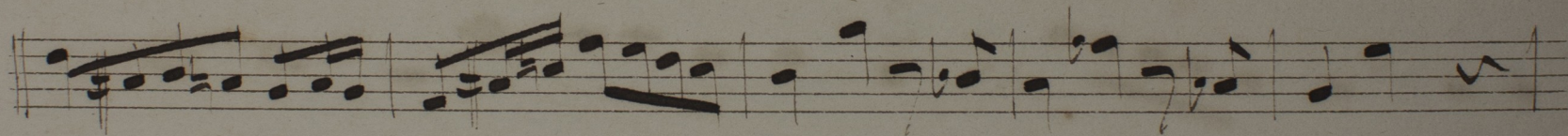
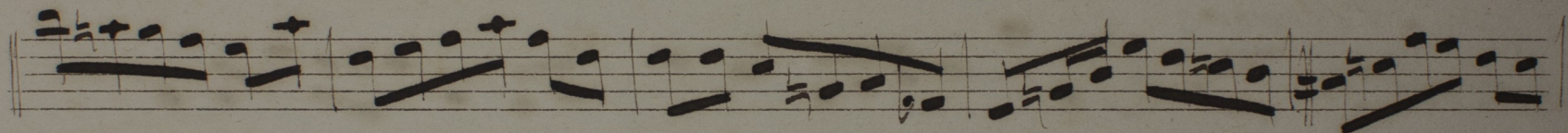
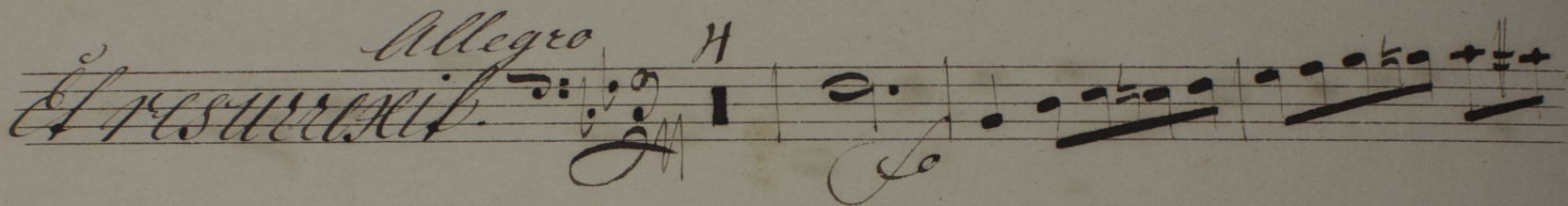
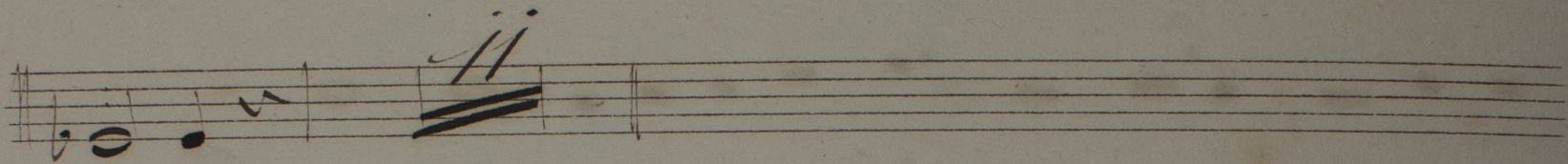
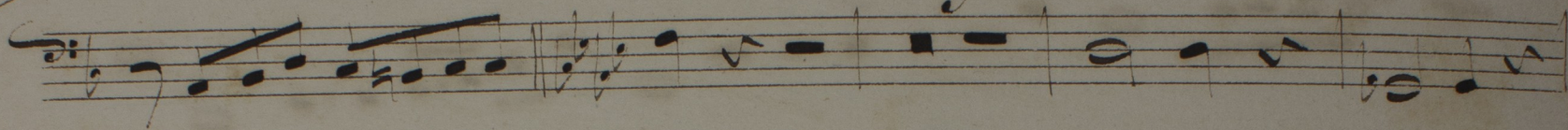
*Allegro*  
*Andante*

*Adagio.*

*In carnatus*



*12.*





Musical staff with a treble clef, a key signature of one flat, and a time signature of 2/4. It begins with a fermata over a whole note, followed by a series of eighth and sixteenth notes.

Musical staff with a treble clef, a key signature of one flat, and a time signature of 2/4. It features a fermata over a whole note, followed by a double bar line and a repeat sign.

Musical staff with a treble clef, a key signature of one flat, and a time signature of 2/4. It starts with the tempo marking *Allegro mod.<sup>to</sup>* and the text *Et Filium.* written in cursive. The music begins with a fermata over a whole note.

Musical staff with a treble clef, a key signature of one flat, and a time signature of 2/4. It continues the melodic line with eighth and sixteenth notes.

Musical staff with a treble clef, a key signature of one flat, and a time signature of 2/4. It includes a fermata over a whole note, followed by a double bar line and a repeat sign, and then continues with the melody.

Musical staff with a treble clef, a key signature of one flat, and a time signature of 2/4. It begins with a fermata over a whole note, followed by a double bar line and a repeat sign.

Musical staff with a treble clef, a key signature of one flat, and a time signature of 2/4. It starts with a fermata over a whole note, followed by a double bar line and a repeat sign.

Musical staff with a treble clef, a key signature of one flat, and a time signature of 2/4. It begins with a fermata over a whole note, followed by a double bar line and a repeat sign.

Musical staff with a treble clef, a key signature of one flat, and a time signature of 2/4. It features a fermata over a whole note, followed by a double bar line and a repeat sign, and then the text *Y. S. Sanctus.* written in cursive.

Two empty musical staves at the bottom of the page.



*Moderato.*

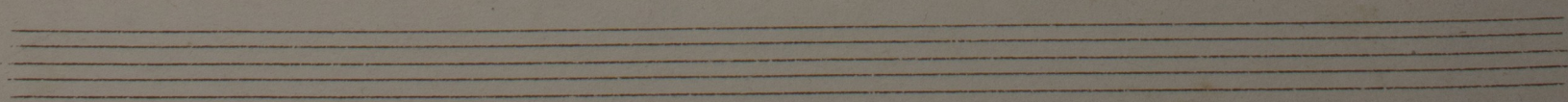
*Sanctus.*

Handwritten musical score for the *Sanctus* section. The tempo is marked *Moderato.* The score is written on five staves. The first staff begins with a treble clef, a common time signature, and the tempo marking *Moderato.* The title *Sanctus.* is written in a large, decorative script. The music consists of a single melodic line with various note values, rests, and dynamic markings such as *p* and *f*. There are also some performance instructions like *2* and *1* above notes. The piece concludes with a double bar line and a final cadence.

*Moderato.*

*Benedictus.*

Handwritten musical score for the *Benedictus* section. The tempo is marked *Moderato.* The score is written on four staves. The first staff begins with a treble clef, a common time signature, and the tempo marking *Moderato.* The title *Benedictus.* is written in a large, decorative script. The music consists of a single melodic line with various note values, rests, and dynamic markings such as *p* and *mf*. There are also some performance instructions like *2*, *3*, and *14.* above notes. The piece concludes with a double bar line and a final cadence.





*Adagio.*

*Agnus dei.*

117. *trio*

*Allegro.*

*Dono nobis.*

10. *mplo*

Musical staff with notes and measure number 22. Includes a blue diagonal line and the word *Lo*.

Musical staff with notes and a blue diagonal line.

Musical staff with notes and a blue diagonal line.

Musical staff with notes, measure number 8, and the word *Lo*. Includes a blue diagonal line and the word *trio*.

Musical staff with notes and a blue diagonal line.

Musical staff with notes, measure number 2, and the word *p*.

Musical staff with notes, measure number 10, and the word *Lo*.

Empty musical staves with handwritten text: *Zeit, H. Florian 4/5. 32 (Bruckner-Festwoche)*