



Messe von H. Bruckner:

Tromba et Corne 1^{mo}

Tempo Tact.

Tromba in B. Allegro.

Floria C E f mf

Musical notation with notes and rests.

Musical notation with notes and rests, including a first ending bracket.

Musical notation with notes and rests, including a first ending bracket.

Musical notation with notes and rests, including a first ending bracket.

Musical notation with notes and rests, including a first ending bracket.

Musical notation with notes and rests.

Andante.

Qui tollis C G mf

Quoniam C E mf no

Handwritten blue ink scribbles and markings.

Allo.

1 1

2

12.
12.

9.

Tee

H

Allegro Tromba in B.

Allo.

1

11.

cfo

H

mpo

Adagio.

Et incarnatus.

17.

18.

Allegro.

Et resurrexit.

H

mpo.

fo.

1 1 7.

ff *ff*

Langsamer: *Tempo^{mo}* *Claro in Gb* 119. 11.

ff 12.

Allegro moderato. *Et Filium.* 11.

5. *ff*

8 11 *ff*

Tromba in B. mod^{to} *Sanctus.* *Decres.* 2

ff

Handwritten musical notation for the first section, consisting of three staves. The first staff has a treble clef and contains notes with dynamics 'edda', 'fma', and 'f'. The second staff has a bass clef and contains notes with dynamics 'mf' and 'f'. The third staff is a continuation of the bass line.

Moderato. Corno in Es.
Benedictus.

Handwritten musical notation for the second section, consisting of six staves. The first staff has a treble clef and contains notes with dynamics 'sfz' and 'p'. The second staff has a bass clef and contains notes with dynamics 'sfz' and 'p'. The third staff has a bass clef and contains notes with dynamics 'sfz' and 'p'. The fourth staff has a bass clef and contains notes with dynamics 'pp' and 'mf'. The fifth staff has a bass clef and contains notes with dynamics 'sfz' and 'p'. The sixth staff has a bass clef and contains notes with dynamics 'sfz' and 'mf'.

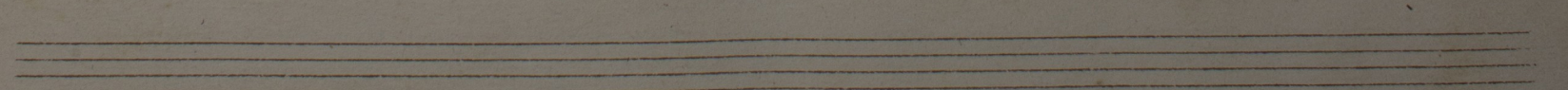
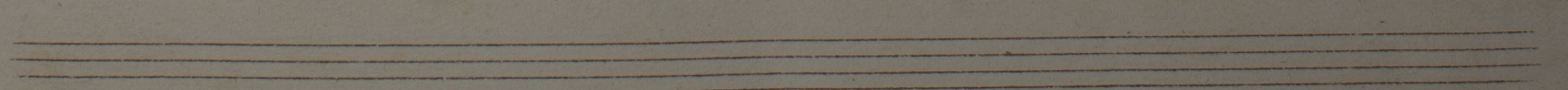
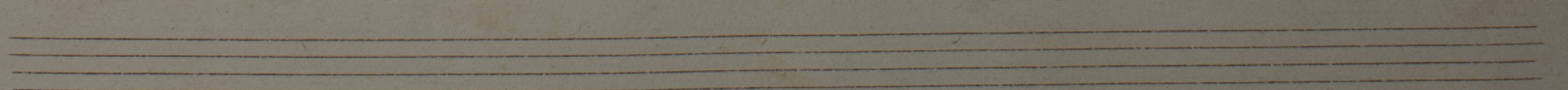
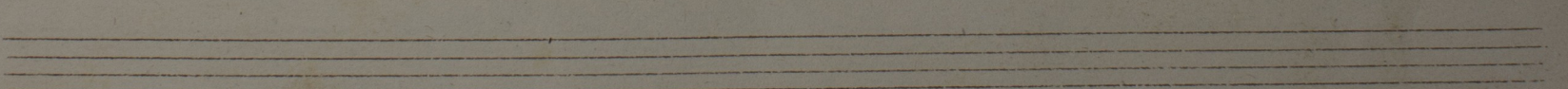
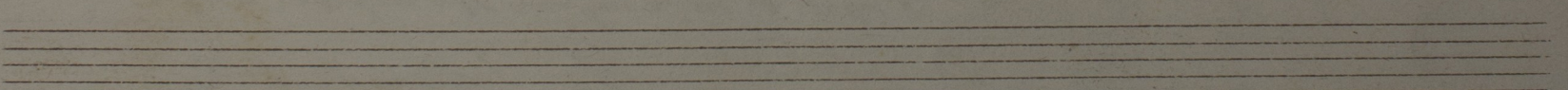
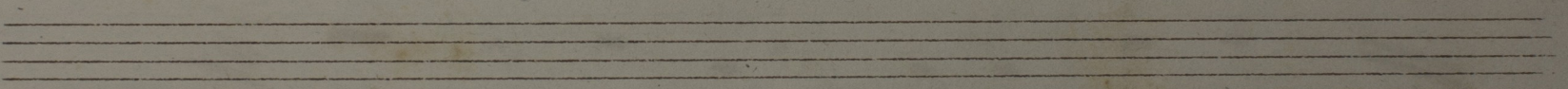
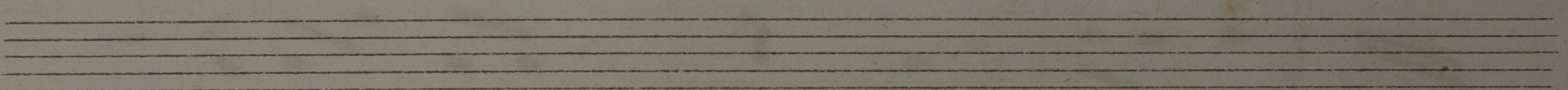
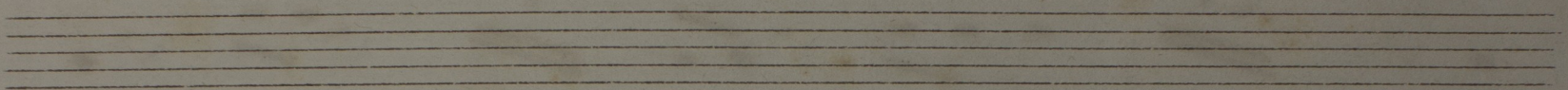
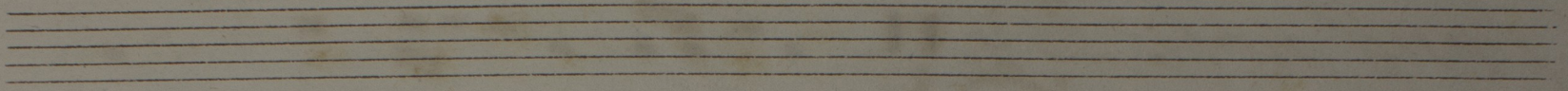
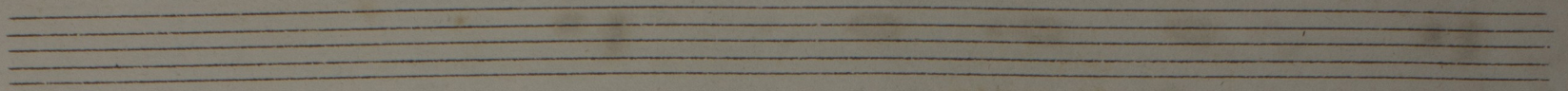
Adagio. Corno in B.
Agnus dei

Handwritten musical notation for the third section, consisting of two staves. The first staff has a treble clef and contains notes with dynamics 'mf'. The second staff has a bass clef and contains notes with dynamics 'p'.

Allegro. Tromba in B.
Dona nobis

Copied in Linz am 11. Sept. 854.

J. Schimatschek
St. Florian 4/1932. Originalinschrift und
Rudolf Riedlbauer *Druckaufsatz*



Agosto. H. Bruchner:

Tromba et Corno II^{do}



87

Tutti Tacet.

Allegro. Tromba in B.

Gloria $\text{C} \frac{4}{4}$ *ff*

Musical staff with notes and rests, including a triplet of eighth notes and a first ending bracket.

Musical staff with notes and rests, including a first ending bracket.

Musical staff with notes and rests, including a first ending bracket and a second ending bracket.

Musical staff with notes and rests, including a first ending bracket.

Musical staff with notes and rests, including a first ending bracket.

Andante.

Cui tollis $\text{C} \frac{9}{8}$ *ff*

Allegro

Quoniam $\text{C} \frac{17}{4}$ *ff*

Musical staff with notes and rests, including first and second ending brackets and a double bar line.

G. S.

12.

Allegro. Tromba in B.
Freddo.

Adagio.

Et in carnatus.

Allegro.

Et resurrexit.

Langsamer. Tempissimo Tromba aufgebaut

Allegro Moderato
Tromba

Tromba in B. Moderato
Sanctus

Solo

Moderato
Benedictus

Handwritten musical notation on two staves. The first staff is in treble clef with a key signature of one flat and a 2/4 time signature. It contains several measures of music with dynamic markings *p* and *pp*, and first endings marked with '1'. The second staff is in bass clef with a key signature of one flat and a 2/4 time signature, containing music with dynamic markings *pp* and *mf*, and a first ending marked with '1'.

Adagio
Agnus dei.

Handwritten musical notation on a single staff in bass clef, key signature of one flat, and 2/4 time signature. It includes a first ending marked with '1' and a blue handwritten word 'fuer' written above the staff.

Allagro. Tromba in B.
Sona nobis.

Handwritten musical notation on a single staff in bass clef, key signature of one flat, and 2/4 time signature. It includes a first ending marked with '1' and a blue handwritten word 'fuer' written above the staff.

Handwritten musical notation on a single staff in bass clef, key signature of one flat, and 2/4 time signature. It includes a first ending marked with '1' and a blue handwritten word 'fuer' written above the staff.

Handwritten musical notation on a single staff in bass clef, key signature of one flat, and 2/4 time signature. It includes a first ending marked with '1'.

Capit. Dna 11^{te} 7^{bra} 8. 54.

J. Schmalzer

St. Florian am 4. Mai 1932

Andreas Vierlmeister