

Allegro de Concert

pour le Piano forte

dedié
à Mlle F. Müller (de Vienne).

par F. Chopin.

Dev. 46

Leipzig
Breitkopf et Härtel

(M. S. 3481)



Handwritten musical score on aged paper with 18 staves. The text is mostly illegible due to fading and bleed-through from the reverse side. Faintly visible words include "Allegro", "Andante", and "Moderato".

Partial view of the adjacent page on the right, showing handwritten musical notation including staves and clefs.



Allegro maestoso

Handwritten musical notation for the first system, featuring treble and bass staves with notes, rests, and dynamic markings.

Handwritten musical notation for the second system, including treble and bass staves with complex rhythmic patterns and dynamic markings like "pp" and "cresc".

Handwritten musical notation for the third system, showing treble and bass staves with various musical notations and dynamic markings such as "cresc" and "p".

Handwritten musical notation for the fourth system, featuring treble and bass staves with intricate musical structures and dynamic markings like "p" and "cresc".

Handwritten musical notation for the fifth system, including treble and bass staves with notes, rests, and dynamic markings such as "ff".



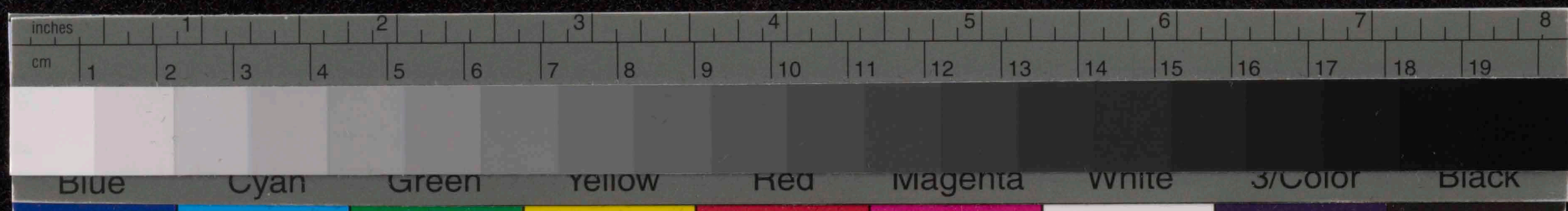
Handwritten musical notation on a grand staff. The system consists of two staves. The upper staff contains a melodic line with various note values and rests. The lower staff contains a complex accompaniment with many beamed notes and rests. A dynamic marking *pp* is visible in the lower right of the system.

Handwritten musical notation on a grand staff. The system consists of two staves. The upper staff features a melodic line with some slurs. The lower staff has a dense accompaniment. A dynamic marking *ff* is present in the middle of the system.

Handwritten musical notation on a grand staff. The system consists of two staves. The upper staff has a melodic line with several slurs. The lower staff contains a complex accompaniment with many beamed notes. A dynamic marking *pp* is visible in the lower left of the system.

Handwritten musical notation on a grand staff. The system consists of two staves. The upper staff has a melodic line with several slurs. The lower staff contains a complex accompaniment with many beamed notes. A dynamic marking *pp* is visible in the lower left of the system.

Handwritten musical notation on a grand staff. The system consists of two staves. The upper staff has a melodic line with several slurs. The lower staff contains a complex accompaniment with many beamed notes. A dynamic marking *pp* is visible in the lower left of the system.



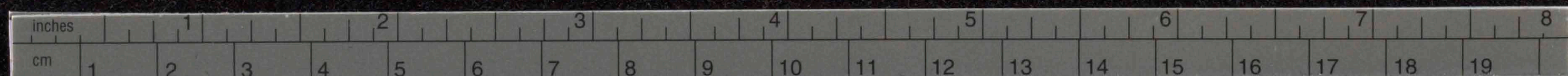
Handwritten musical score, first system. Treble and bass staves. Includes markings such as *resc* and *ped*. Measure numbers 4 and 10 are visible.

Handwritten musical score, second system. Treble and bass staves. Includes markings such as *ped*. Measure number 14 is visible.

Handwritten musical score, third system. Treble and bass staves. Includes marking *rit. - solen. >*. Measure number 16 is visible.

Handwritten musical score, fourth system. Treble and bass staves. Includes marking *rallent ando*. Measure number 20 is visible.

Handwritten musical score, fifth system. Treble and bass staves. Includes marking *acceler ando*. Measure number 22 is visible.



Handwritten musical score for a string instrument, consisting of six systems of two staves each. The notation includes treble and bass clefs, a key signature of two sharps (F# and C#), and a 2/4 time signature. The score is marked with various dynamics and performance instructions:

- System 1:** *molto* (first measure), *solce* (second measure), *ped* (pedal markings throughout).
- System 2:** *graz* (above the staff), *6 loco* (above the staff).
- System 3:** *gravelo* (above the staff), *ped* (pedal markings throughout).
- System 4:** *leggier.* (above the staff), *ped* (pedal markings throughout).
- System 5:** *gravelo* (above the staff), *gravelo* (above the staff), *ped* (pedal markings throughout).

The notation features complex rhythmic patterns, including triplets and sixteenth-note runs, and includes numerous accidentals and slurs. The manuscript is written in dark ink on aged, slightly yellowed paper.



Handwritten musical score system 1, consisting of two staves. The upper staff is in treble clef and the lower in bass clef. The key signature has two sharps (F# and C#). The system includes sixteenth-note passages, slurs, and dynamic markings such as *stretto* and *ff*. There are also some handwritten annotations like *ped* and *φ*.

Handwritten musical score system 2, consisting of two staves. It continues the musical piece with similar notation, including slurs and dynamic markings. The lower staff has some handwritten notes like *φ* and *ped*.

Handwritten musical score system 3, consisting of two staves. It features more complex rhythmic patterns and dynamic markings, including *sempre ff*. The notation includes many slurs and accents.

Handwritten musical score system 4, consisting of two staves. The music continues with various rhythmic values and dynamic markings. There are some handwritten notes like *φ* and *ped*.

Handwritten musical score system 5, consisting of two staves. This system includes dynamic markings like *ff* and *ten*. The notation is dense with slurs and accents. There are also some handwritten notes like *φ* and *ped*.



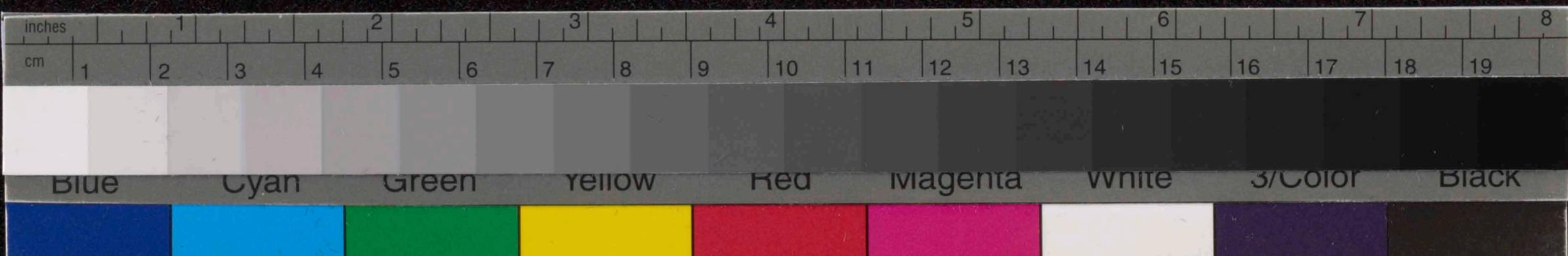
Handwritten musical score, first system. Treble clef, key signature of two sharps (F# and C#). The system consists of two staves. The upper staff contains a melodic line with various note values and rests. The lower staff contains a bass line with chords and single notes. Dynamic markings include *p* and *pp*. There are some handwritten annotations and a circled '6' above the final measure.

Handwritten musical score, second system. Treble clef, key signature of two sharps. The system consists of two staves. The upper staff continues the melodic line. The lower staff continues the bass line. Dynamic markings include *p*. A *loco* marking is present above the final measure of the upper staff.

Handwritten musical score, third system. Treble clef, key signature of two sharps. The system consists of two staves. The upper staff continues the melodic line. The lower staff continues the bass line. Dynamic markings include *p*. A *loco* marking is present above the final measure of the upper staff.

Handwritten musical score, fourth system. Treble clef, key signature of two sharps. The system consists of two staves. The upper staff continues the melodic line. The lower staff continues the bass line. Dynamic markings include *ff*. A *loco* marking is present above the final measure of the upper staff.

Handwritten musical score, fifth system. Treble clef, key signature of two sharps. The system consists of two staves. The upper staff continues the melodic line. The lower staff continues the bass line. Dynamic markings include *p*. A *loco* marking is present above the final measure of the upper staff.



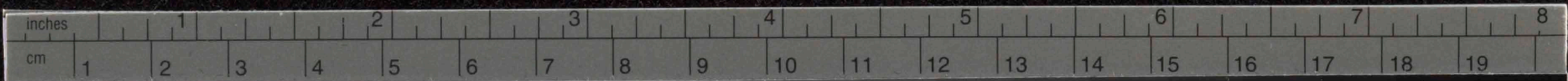
Handwritten musical notation, first system. Treble and bass staves. Includes dynamic markings *fe* and *crec*.

Handwritten musical notation, second system. Treble and bass staves. Includes dynamic marking *Dim*.

Handwritten musical notation, third system. Treble and bass staves. Includes dynamic markings *quasi* and *lento*.

Handwritten musical notation, fourth system. Treble and bass staves. Includes dynamic marking *crec*.

Handwritten musical notation, fifth system. Treble and bass staves. Includes dynamic markings *non ritenuto* and *sostenuto*.



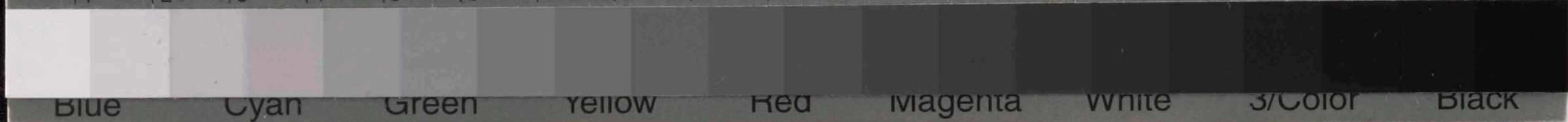
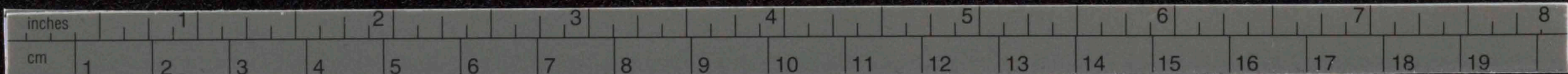
Handwritten musical notation on a grand staff (treble and bass clefs). The music features a complex melodic line in the treble clef and a more rhythmic accompaniment in the bass clef. The key signature is two sharps (F# and C#). The notation includes various note values, rests, and dynamic markings such as *mf* and *mfz*.

Handwritten musical notation on a grand staff. The treble clef part continues with a melodic line, while the bass clef part provides accompaniment. The key signature remains two sharps. Dynamic markings include *mf* and *mfz*.

Handwritten musical notation on a grand staff. The treble clef part features a melodic line with some slurs and accents. The bass clef part continues with accompaniment. The key signature is two sharps. Dynamic markings include *mf* and *mfz*.

Handwritten musical notation on a grand staff. The treble clef part has a melodic line with some slurs. The bass clef part continues with accompaniment. The key signature is two sharps. Dynamic markings include *mf* and *mfz*.

Handwritten musical notation on a grand staff. The treble clef part has a melodic line with some slurs. The bass clef part continues with accompaniment. The key signature is two sharps. Dynamic markings include *mf* and *mfz*.



Handwritten musical score, first system. It consists of two staves. The upper staff contains a melodic line with various notes and rests, marked with *grace* and *loco*. The lower staff contains a bass line with chords and notes, marked with *ten*, *3*, *3*, *a tempo*, and *grace*. There are also some handwritten annotations like *non ritenuto*.

Handwritten musical score, second system. It consists of two staves. The upper staff continues the melodic line with *grace* and *loco* markings. The lower staff continues the bass line with *grace* markings.

Handwritten musical score, third system. It consists of two staves. The upper staff continues the melodic line with *grace* and *loco* markings. The lower staff continues the bass line with *loco* markings.

Handwritten musical score, fourth system. It consists of two staves. The upper staff continues the melodic line. The lower staff continues the bass line.

Handwritten musical score, fifth system. It consists of two staves. The upper staff continues the melodic line. The lower staff continues the bass line, with a *cresc.* marking.



Handwritten musical notation, first system. Treble and bass staves. Includes markings: *graz*, *loco*, *graz*, *loco*. The notation features complex rhythmic patterns and accidentals.

Handwritten musical notation, second system. Treble and bass staves. Includes markings: *graz*, *loco*, *cresc*. The notation continues with complex rhythmic patterns and accidentals.

Handwritten musical notation, third system. Treble and bass staves. Includes markings: *graz*, *loco*. The notation continues with complex rhythmic patterns and accidentals.

Handwritten musical notation, fourth system. Treble and bass staves. Includes markings: *graz*, *loco*, *cresc*. The notation continues with complex rhythmic patterns and accidentals.

Handwritten musical notation, fifth system. Treble and bass staves. Includes markings: *graz*, *loco*. The notation continues with complex rhythmic patterns and accidentals.



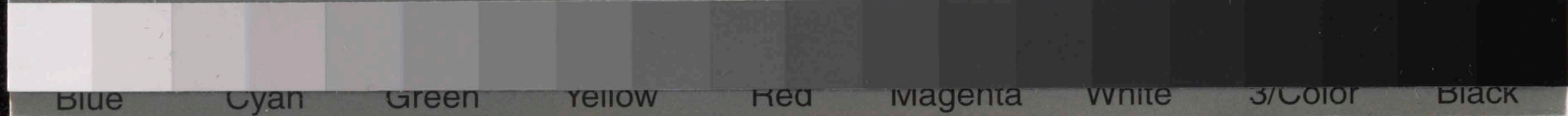
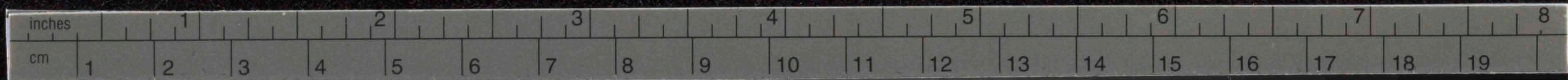
Handwritten musical score, first system. Treble and bass staves. Includes markings: *ten*, *8va*, *cresc*, *f*, *stretto*. The music features complex rhythmic patterns and dynamic markings.

Handwritten musical score, second system. Treble and bass staves. Includes markings: *low*, *sim*, *ritenuto*, *molto*, *solce*, *ten*. The music features complex rhythmic patterns and dynamic markings.

Handwritten musical score, third system. Treble and bass staves. Includes marking: *ten*. The music features complex rhythmic patterns and dynamic markings.

Handwritten musical score, fourth system. Treble and bass staves. Includes markings: *ten*, *legato*. The music features complex rhythmic patterns and dynamic markings.

Handwritten musical score, fifth system. Treble and bass staves. Includes marking: *lento*. The music features complex rhythmic patterns and dynamic markings.



Handwritten musical notation on a five-line staff. The top staff contains a melodic line with various notes and rests. The bottom staff contains a bass line with notes and rests. The word "lappia" is written above the second measure of the top staff.

Handwritten musical notation on a five-line staff. The top staff contains a melodic line with notes and rests. The bottom staff contains a bass line with notes and rests. The word "sua" is written above the first measure of the top staff.

Handwritten musical notation on a five-line staff. The top staff contains a melodic line with notes and rests. The bottom staff contains a bass line with notes and rests. The word "sua" is written above the first measure of the top staff.

Handwritten musical notation on a five-line staff. The top staff contains a melodic line with notes and rests. The bottom staff contains a bass line with notes and rests. The word "dolce" is written above the first measure of the top staff. The word "cres" is written above the fifth measure of the top staff. The word "rappohendo" is written above the sixth measure of the top staff.

Handwritten musical notation on a five-line staff. The top staff contains a melodic line with notes and rests. The bottom staff contains a bass line with notes and rests. The word "lappia" is written above the first measure of the top staff.



cresc

Handwritten musical notation for the first system, consisting of two staves. The top staff is in treble clef and the bottom in bass clef. The music includes various note values, rests, and dynamic markings such as *cresc* and *mf*. There are also some handwritten annotations like 'x' and 'p'.

ff
stretto

Handwritten musical notation for the second system, consisting of two staves. The music features notes, rests, and dynamic markings including *ff* and *stretto*. There are also some handwritten annotations like 'x' and 'p'.

gran *low*

Handwritten musical notation for the third system, consisting of two staves. The music includes notes, rests, and dynamic markings such as *gran* and *low*. There are also some handwritten annotations like 'x' and 'p'.

gran *low* *gran* *low* *gran* *low*

Handwritten musical notation for the fourth system, consisting of two staves. The music includes notes, rests, and dynamic markings such as *gran* and *low*. There are also some handwritten annotations like 'x' and 'p'.

fine

14-15



No. 10

The image shows ten staves of handwritten musical notation. The notation is written in dark ink on aged, yellowish paper. The first two staves appear to be a vocal line with lyrics written below the notes. The subsequent staves contain various musical notations, including notes, rests, and possibly bass lines. The handwriting is somewhat faded and the paper shows signs of age and wear.

HMS 42B

