

SIX
QUATUOR

à

Deux Violons, Taille,
et Basse Obligés
Composés

Par

GIUSEPPE HAYDN

à Vienne

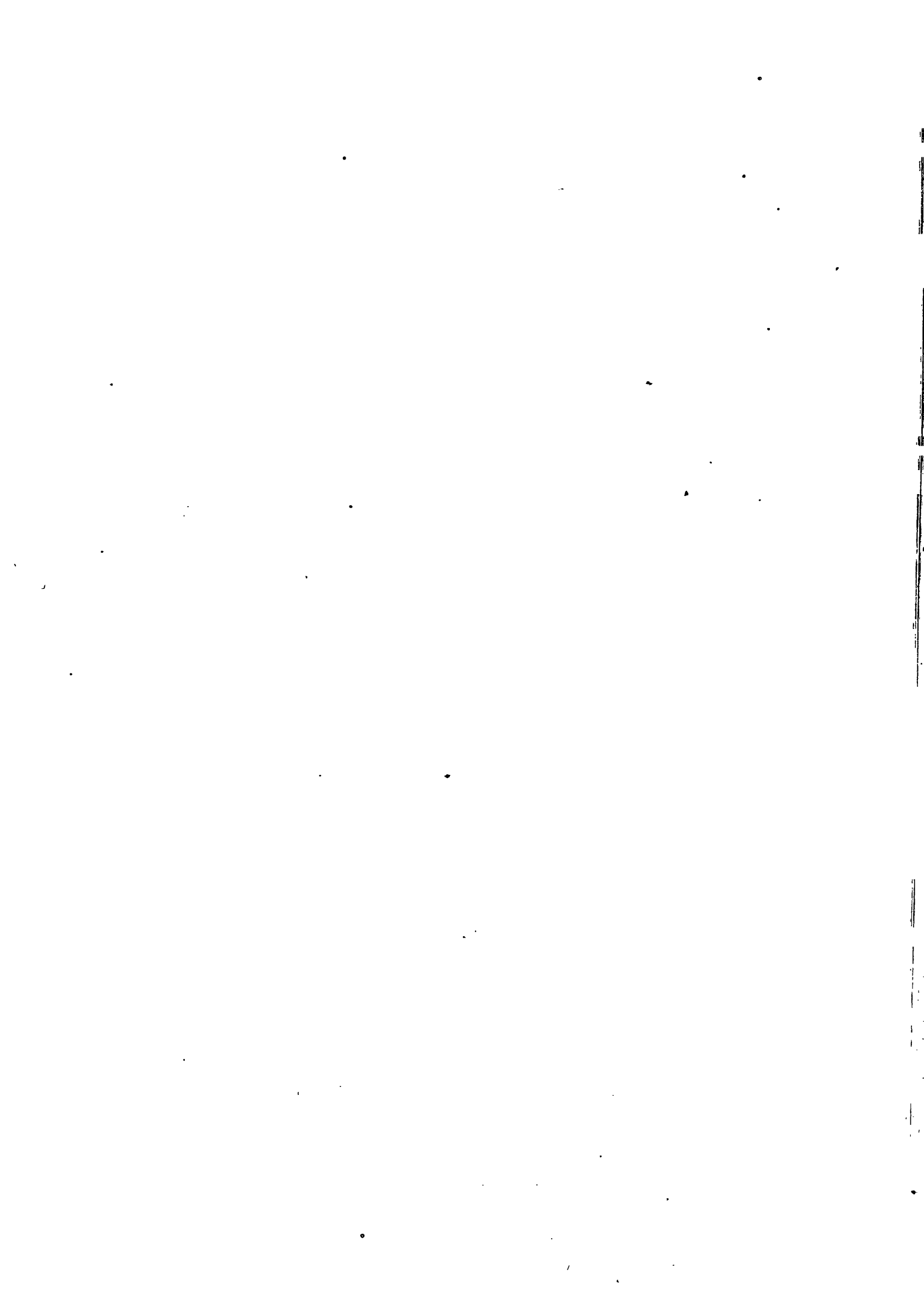
OPERA SECONDA.

A AMSTERDAM chez J.J. HUMMEL, Marchand & Imprimeur de Musique.

N^o 94.

Prix 5^{:-}





VIOLINO SECONDO

QUARTETTO I

16. *p* *f* *p* *f*

Menuetto

Trio

Adagio

f *p* *f* *p* *f*

VIOLINO SECONDO

The first section of the score consists of ten staves of music. It begins with a treble clef, a key signature of two sharps (F# and C#), and a 3/4 time signature. The music is characterized by a dense texture of sixteenth and thirty-second notes, creating a rapid, rhythmic pattern. There are several dynamic markings: *f* (forte) and *p* (piano). The section concludes with a double bar line and repeat signs.

The *Minuetto* section begins on the fifth staff of this block. It is written in a 3/4 time signature with a key signature of two sharps. The tempo is marked *Andante*. The melody is more melodic and features a variety of note values, including quarter, eighth, and sixteenth notes. Dynamic markings include *f*, *p*, and *pp*. The section ends with a double bar line and repeat signs.

The *Trio* section begins on the sixth staff of this block. It is in a 3/4 time signature with a key signature of two sharps. The tempo is marked *Andante*. The music features a prominent triplet pattern in the right hand. Dynamic markings include *f* and *p*. The section concludes with a double bar line and repeat signs.

The *All: Molto* section begins on the seventh staff of this block. It is in a 2/4 time signature with a key signature of two sharps. The tempo is marked *All: Molto*. The music is highly rhythmic, featuring a mix of eighth and sixteenth notes. Dynamic markings include *f*, *p*, and *pp*. The section ends with a double bar line and repeat signs.

The *Men. Da Capo* section begins on the eighth staff of this block. It is in a 2/4 time signature with a key signature of two sharps. The tempo is marked *All: Molto*. The music is highly rhythmic, featuring a mix of eighth and sixteenth notes. Dynamic markings include *f*, *p*, and *pp*. The section ends with a double bar line and repeat signs.

The final section of the score consists of four staves of music. It continues in a 2/4 time signature with a key signature of two sharps. The music is highly rhythmic, featuring a mix of eighth and sixteenth notes. Dynamic markings include *f*, *p*, and *pp*. The section concludes with a double bar line and repeat signs.

VIOLINO SECONDO

QUARTETTO II

Allegro

Menuetto

Trio

Adagio

VIOLINO SECONDO

The musical score for Violino Secondo, page 7, is divided into three distinct sections:

- Menuetto:** The first section is in 3/4 time. It begins with a *p* (piano) dynamic and features a mix of eighth and sixteenth notes. Dynamics shift to *f* (forte) and back to *p*. The section concludes with a double bar line and a repeat sign.
- Trio:** The second section is also in 3/4 time. It starts with a *p* dynamic and consists of a steady eighth-note accompaniment. It ends with a double bar line and a repeat sign.
- Presto:** The third section is in 2/4 time. It begins with a *p* dynamic and is characterized by a rapid eighth-note pattern. Dynamics fluctuate between *f* and *p*. The section ends with a double bar line and a repeat sign.

Throughout the score, various musical notations are used, including slurs, accents, and fingerings (1, 3). The page number 94 is printed at the bottom right corner.

VIOLINO SECONDO

QUARTETTO III

All. molto *f* *p*

Menuetto

Trio *p* *f*

Men
D.C.

con Sordini Adagio

VIOLINO SECONDO

First musical staff with treble clef, key signature of two flats, and a 3/4 time signature. It contains a series of eighth and sixteenth notes.

Second musical staff with treble clef, key signature of two flats, and a 3/4 time signature. It contains a series of eighth and sixteenth notes.

Third musical staff with treble clef, key signature of two flats, and a 3/4 time signature. It contains a series of eighth and sixteenth notes. Dynamics include *f*, *p*, and *pp*.

Fourth musical staff with treble clef, key signature of two flats, and a 3/4 time signature. It contains a series of eighth and sixteenth notes. Dynamics include *f*, *p*, and *pp*. Performance markings include *Movuetto*, *Pizzicato*, *Colarco*, and *Pizzxi*.

Fifth musical staff with treble clef, key signature of two flats, and a 3/4 time signature. It contains a series of eighth and sixteenth notes. Dynamics include *f*, *p*, and *pp*. Performance markings include *Pizzxi* and *Colar*.

Sixth musical staff with treble clef, key signature of two flats, and a 3/4 time signature. It contains a series of eighth and sixteenth notes. Dynamics include *f*, *p*, and *f*. Performance marking includes *Trio*.

Seventh musical staff with treble clef, key signature of two flats, and a 3/4 time signature. It contains a series of eighth and sixteenth notes. Dynamics include *p*.

Eighth musical staff with treble clef, key signature of two flats, and a 3/4 time signature. It contains a series of eighth and sixteenth notes. Dynamics include *p*. Performance markings include *Var. 1* and *Var. 2*.

Ninth musical staff with treble clef, key signature of two flats, and a 3/4 time signature. It contains a series of eighth and sixteenth notes. Dynamics include *p*. Performance marking includes *Var. 3*.

Tenth musical staff with treble clef, key signature of two flats, and a 3/4 time signature. It contains a series of eighth and sixteenth notes. Dynamics include *p*. Performance marking includes *Men Da Capo*.

Eleventh musical staff with treble clef, key signature of two flats, and a 2/4 time signature. It contains a series of eighth and sixteenth notes. Dynamics include *f*. Performance marking includes *Finale*.

Twelfth musical staff with treble clef, key signature of two flats, and a 2/4 time signature. It contains a series of eighth and sixteenth notes. Dynamics include *f*. Performance marking includes *Allegro*.

Thirteenth musical staff with treble clef, key signature of two flats, and a 2/4 time signature. It contains a series of eighth and sixteenth notes. Dynamics include *f*.

Fourteenth musical staff with treble clef, key signature of two flats, and a 2/4 time signature. It contains a series of eighth and sixteenth notes. Dynamics include *f*.

Fifteenth musical staff with treble clef, key signature of two flats, and a 2/4 time signature. It contains a series of eighth and sixteenth notes. Dynamics include *f*.

VIOLINO SECONDO

QUARTETTO IV

VIOLINO SECONDO

QUARTETTO V *p*
Presto *f* *p* *f*

Menuetto

Trio

Largo
Cantabile Allabreve

VIOLINO SECONDO

First staff of music, treble clef, key signature of one sharp (F#), starting with a treble clef and a key signature change to two sharps (F# and C#).

Second staff of music, treble clef, key signature of two sharps (F# and C#).

Third staff of music, treble clef, key signature of two sharps (F# and C#).

Fourth staff of music, treble clef, key signature of two sharps (F# and C#).

Fifth staff of music, treble clef, key signature of two sharps (F# and C#).

Sixth staff of music, treble clef, key signature of two sharps (F# and C#).

Seventh staff of music, treble clef, key signature of two sharps (F# and C#), 3/4 time signature, *Meruetto* tempo marking.

Eighth staff of music, treble clef, key signature of two sharps (F# and C#), 3/4 time signature, *Trio* section marking.

Ninth staff of music, treble clef, key signature of two sharps (F# and C#), 3/4 time signature, *Alleg. Da Capo* tempo marking.

Tenth staff of music, treble clef, key signature of two sharps (F# and C#), 2/4 time signature, *Finale Presto* tempo marking.

Eleventh staff of music, treble clef, key signature of two sharps (F# and C#), 2/4 time signature.

Twelfth staff of music, treble clef, key signature of two sharps (F# and C#), 2/4 time signature.

VIOLINO SECONDO

QUARTETTO VI

Adagio

Var. 1

Var. 2

Var. 3

Var. 4

Menuetto

Trio

VIOLINO SECONDO

Presto

Fin.

Da Capo

Mozzetto

Trio

Men. Da Capo

Presto

p *f* *p* *f* *p* *f*

fz

