



# YOU AND I

SONG

WORDS BY

*Ethel Lloyd Patterson*

MUSIC BY

**WARD-STEPHENS.**

Price 10 cents net

Soprano or Tenor.

Mezzo Soprano or Baritone.

Made in U.S.A.

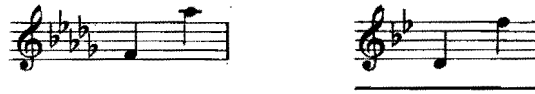
The **ARTHUR P. SCHMIDT Co.**  
BOSTON  
120 BOYLSTON ST.      NEW YORK  
8 WEST 40<sup>TH</sup> ST.

Copyright 1914 by Arthur P. Schmidt.

R

To  
MADAME BUCKHOUT

# You and I



ETHEL LLOYD PATTERSON\*

WARD-STEPHENS

*mp*

*Ped.* \*

*mp*

O - ver the breast — of the Dream - er's sea —

*p*

Love to the wind - - ward, Love on the lee, — Spray, — on a fast fill-ing

*p*

*Ped.* \*

\*By permission

Copyright 1914 by Arthur P. Schmidt  
International Copyright Secured  
Public Performance Permitted

sail and we \_\_\_\_\_ Sun - kissed \_\_\_\_\_ wind - kissed \_\_\_\_\_

*cresc.* *mf*

*cresc.*

*Red.* *Red.*

kiss - ing and free! \_\_\_\_\_ You and I! \_\_\_\_\_ Just you and I! \_\_\_\_\_

*f* *mp*

*f* *p*

*Red.* \* *Red.* \*

You and I! \_\_\_\_\_ Just you and I! \_\_\_\_\_ O what a song \_\_\_\_\_ for two hearts to sing \_\_\_\_\_

\* *Red.*

Song of a bird at birth of spring! You and I! Just you and

I!

Straight for the heart of the setting sun Far, in our wake is a

day that is done Sing - ing we sail for a night just be-gun

*mp* Lit, by God's stars — com-ing out one by one — *rit.*

You and I! — Just you and I! O what a song — for two

hearts to sing — Song of a bird — at birth of spring — *ff*

*f* You and I! — Just you and I!

# RECENT SONGS

	Net		Net
ADAMS, ERNEST HARRY		HOPKINSON, FRANCIS	
THE WIND-BLOWN HILL (2 keys)	.50	"THE FIRST AMERICAN COMPOSER"	
TO-DAY (2 keys)	.40	MY DAYS HAVE BEEN SO WONDROUS FREE	.40
DREAMS OF YESTERYEAR (2 keys)	.40	(2 keys)	
A GARLANDED LANE (2 keys)	.45	O'ER THE HILLS (2 keys)	.45
ASHFORD, EMMA L.		INNIS, LAURA S.	
HOME-COMING (2 keys)	.45	MY RICHES (2 keys)	.40
AYLWARD, FLORENCE		MCCASKILL, IAN	
IN THIS QUIET HOUR (2 keys)	.40	YEARNINGS	.40
BARBOUR, FLORENCE NEWELL		MARSH, W. J.	
WHERE HAPPINESS GROWS (2 keys)	.45	A FLOWER WREATH. Song Suite for So-	
BY THE BENDING TIDE (2 keys)	.45	piano, Mezzo-Soprano and Contralto	1.25
BRAINE, ROBERT		CANTERBURY BELLS (3 keys)	.40
COME TO THE WILDWOOD. Waltz Song.		MEMORIES (2 keys)	.40
(2 keys)	.60	TO-NIGHT (2 keys)	.40
BRANSCOMBE, GENA		METCALF, JOHN W.	
SPIRIT OF MOTHERHOOD (2 keys)	.45	THE DESERT TRAIL (2 keys)	.50
CLARKE, J. LELAND		ETERNITY (2 keys)	.45
ACROSS THE FIELDS (2 keys)	.40	MAH DIXIE LAND (2 keys)	.40
COX, RALPH		MILLIGAN, HAROLD VINCENT	
THE HEART'S NEED (2 keys)	.40	APRIL, MY APRIL (3 keys)	.45
IN A SOUTHERN GARDEN	.40	MOFFAT, ALFRED	
DOBSON, E. ALDRICH		MELANIA (Old English) (2 keys)	.40
SONS OF MANITOU. American Indian		MORSE, CHARLES H.	
Song Cycle (2 keys)	1.25	ALL IN ALL (2 keys)	.40
GIDEON, HENRY		NYVALL, DAVID, Jr.	
BY THE CRADLE OF YANKELE (2 keys)	.30	INDIAN LOVE CALL (2 keys)	.40
RAISINS AND ALMONDS (2 keys)	.40	PEERY, ROB ROY	
SONG OF THE LITTLE BIRD (2 keys)	.40	JOY IS IN MY HEART (3 keys)	.40
GRANT-SCHAEFER, G. A.		NIGHT (2 keys)	.40
Londonderry Air. "WOULD GOD I WERE		RISHER, ANNA PRISCILLA	
THE TENDER APPLE BLOSSOMS (3 keys)	.40	THE PIPER'S SONG (2 keys)	.45
THE HIDDEN VIOLET (2 keys)	.40	HEART OF MINE (2 keys)	.45
THE LONG-TAIL BLUE	.40	TERRY, ROBERT HUNTINGTON	
APRIL FOOL (2 keys)	.40	THE MORNING IS CALLING (2 keys)	.40
MUSIEU BAINJO (Creole) (2 keys)	.40	LAZIN' ALONG (2 keys)	.40
THE LITTLE ANGEL BAND (Negro) (2 keys)	.45	SONG FOR THE SEASONS (2 keys)	.40
RED RIVER BOAT SONG (French-Canadian)	.40	EARLY NEWS (2 keys)	.40
ST. LAWRENCE BOAT SONG (French		AWAKE! AWAKE MY LOVE. Waltz Song	
Canadian)	.45	(2 keys)	.50
HARRIS, CUTHBERT		WARD-STEPHENS	
THE ROSE WILL BLOOM AGAIN (2 keys)	.40	BABY'S LAUGH (2 keys)	.40
THE FAIRY GARDENERS (2 keys)	.45		

## SONGS WITH OBLIGATO

BARBOUR, FLORENCE NEWELL		DOBSON, E. ALDRICH	
WHERE HAPPINESS GROWS (Violin)		LEGEND OF THE WATERFALL	
(2 keys)	.45	(Flute or Violin) (2 keys)	.45
BEACH, MRS. H. H. A.		FOOTE, ARTHUR	
THE YEAR'S AT THE SPRING (Violin)		I'M WEARING AWA' (Violin)	.45
(2 keys)	.45	MARSH, W. J.	
BRANSCOMBE, GENA		O PERFECT LOVE (Violin) (2 keys)	.50
SPIRIT OF MOTHERHOOD (Violin)		RISHER, ANNA PRISCILLA	
(2 keys)	.45	A WITHERED ROSE (Violin) (2 keys)	.50

The Arthur P. Schmidt Co.

BOSTON  
120 Boylston Street

NEW YORK  
8 West 40th Street