

16. Erster Verlust

from *Album für die Jugend. Op. 68* (1848)

Arranged for recorders from the original score for piano by Andrea Bornstein

Robert Schumann (1810 - 1856)

Not fast

Musical score for recorders S1, S2, A, and B, measures 1-7. The score is in 2/4 time and B-flat major. S1 has a melodic line with slurs and ties. S2 has a supporting line with eighth notes and rests. A and B have bass lines with rests and occasional notes.

Musical score for recorders S1, S2, A, and B, measures 8-15. The score continues from the previous system. S1 has a melodic line with slurs and ties. S2 has a supporting line with eighth notes and rests. A and B have bass lines with rests and occasional notes.

Musical score for recorders S1, S2, A, and B, measures 16-23. The score is marked *Più lentamente* and *A tempo*. S1 has a melodic line with slurs and ties. S2 has a supporting line with eighth notes and rests. A and B have bass lines with rests and occasional notes.

Musical score for recorders S1, S2, A, and B, measures 24-31. The score continues from the previous system. S1 has a melodic line with slurs and ties. S2 has a supporting line with eighth notes and rests. A and B have bass lines with rests and occasional notes.

16. Erster Verlust

from *Album für die Jugend. Op. 68* (1848)

Arranged for recorders from the original score for piano by Andrea Bornstein

Robert Schumann (1810 - 1856)

Not fast



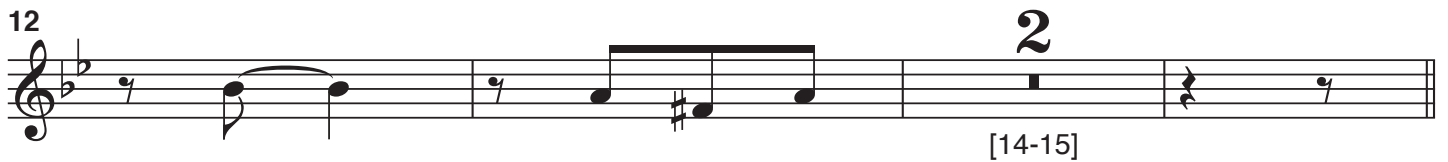
16. Erster Verlust

from *Album für die Jugend. Op. 68* (1848)

Arranged for recorders from the original score for piano by Andrea Bornstein

Robert Schumann (1810 - 1856)

Not fast



16. Erster Verlust

from *Album für die Jugend. Op. 68* (1848)

Arranged for recorders from the original score for piano by Andrea Bornstein

Robert Schumann (1810 - 1856)

Not fast

A

6

12

16 *Più lentamente* *A tempo*

22

28

16. Erster Verlust

from *Album für die Jugend. Op. 68* (1848)

Arranged for recorders from the original score for piano by Andrea Bornstein

Robert Schumann (1810 - 1856)

Not fast

B 

16 

