

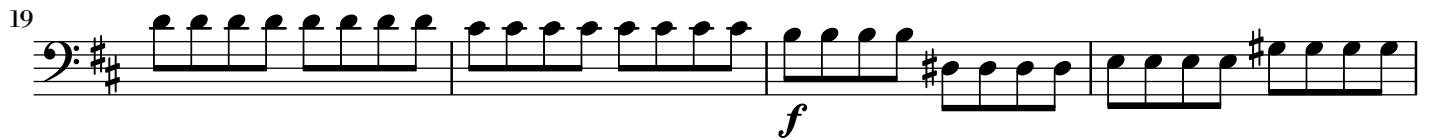
# Sinfonie in D

Basso

Franz Joseph Haydn

Hob. I:13 (1763)

*Allegro molto*



42



46



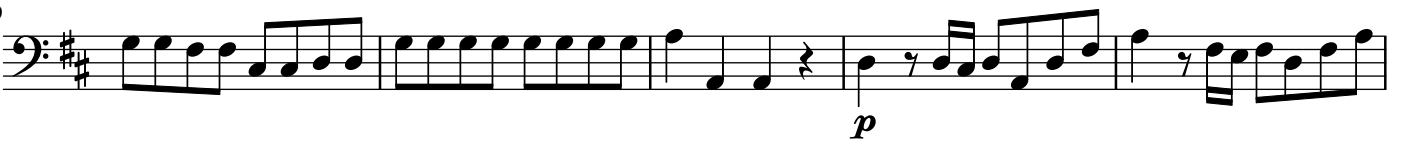
50



54



59



64



69



74



78



83



Adagio cantabile

Violoncello solo

Basso

Measures 1-2 of the score. The Violoncello solo part (treble clef) begins with a half note G4, followed by a series of eighth and sixteenth notes. The Basso part (bass clef) starts with a piano (*p*) dynamic and features a steady eighth-note accompaniment.

Measures 3-4. The Violoncello solo part continues with a melodic line, including a triplet of eighth notes in measure 3. The Basso part maintains its accompaniment.

Measures 5-6. The Violoncello solo part features a triplet of eighth notes in measure 5 and another triplet in measure 6. The Basso part continues with its accompaniment.

Measures 7-8. The Violoncello solo part has a more active melodic line with many sixteenth notes. The Basso part continues with its accompaniment.

Measures 9-10. The Violoncello solo part includes a trill (*tr*) in measure 9. The Basso part continues with its accompaniment.

Measures 11-12. The Violoncello solo part has a trill (*tr*) in measure 11. The Basso part continues with its accompaniment.

Measures 13-14. The Violoncello solo part has a trill (*tr*) in measure 13. The Basso part continues with its accompaniment.

15

Measures 15-17. The top staff features a complex melodic line with eighth-note triplets and sixteenth-note runs. The bottom staff provides a steady bass accompaniment with eighth notes and rests.

18

Measures 18-20. Measure 18 includes a trill (tr) in the top staff. Measure 19 features a forte (f) dynamic marking. Measure 20 features a piano (p) dynamic marking. The top staff continues with intricate melodic patterns, while the bottom staff maintains a consistent rhythmic accompaniment.

21

Measures 21-23. Measure 21 includes eighth-note triplets in both staves. The top staff continues with rapid melodic passages, and the bottom staff provides a rhythmic foundation with eighth notes and rests.

24

Measures 24-25. The top staff features a change in time signature to 12/8. The melodic line is highly active with sixteenth-note runs. The bottom staff continues with a steady eighth-note accompaniment.

26

Measures 26-27. The top staff continues with dense melodic textures in 12/8 time. The bottom staff provides a consistent bass line with eighth notes and rests.

28

Measures 28-29. Measure 28 includes a trill (tr) in the top staff. The melodic line in the top staff is highly rhythmic and complex. The bottom staff continues with a steady accompaniment.

30

Measures 30-31. Measure 30 includes a trill (tr) in the top staff. The piece concludes with a final cadence in the top staff and a steady bass line in the bottom staff.





Finale

Allegro molto

*p* *p*

9

*f*

21

*f*

31

*f*

39

*f*

48

*p* *f*

57

*f*

69

*f*

84

92

100

109

120

130

139

152

162