

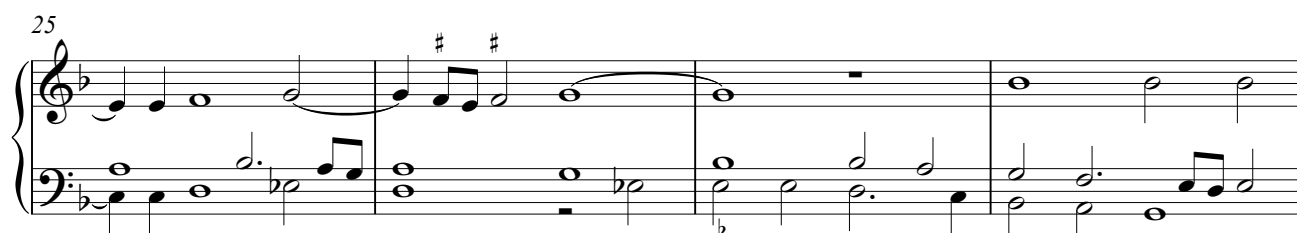
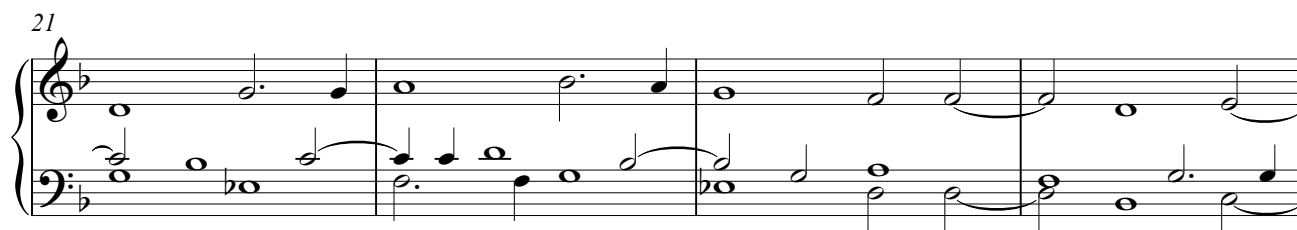
# Ego dixi Domine, miserere mei

Motettarum trium vocum 1577 12, Magnum opus musicum 42  
alla quinta bassa

Orlande de Lassus (Mons 1532 - München 1594)

Transcription Arnold den Teuling 2018

Prima pars. Trium vocum. XXXXII



29

33

37

40

43

46 Secunda pars

50

53

Measures 53-56: The right hand (treble clef) begins with a half note G4, followed by quarter notes A4, Bb4, and C5. The left hand (bass clef) has a half note G3, followed by quarter notes F3, E3, and D3. A slur connects the first two measures of the left hand. The piece is in a key with one flat (Bb major or Dm) and 4/4 time.

57

Measures 57-60: The right hand continues with quarter notes D5, C5, Bb4, and A4. The left hand has a half note G3, followed by quarter notes F3, E3, and D3. A slur connects the first two measures of the right hand. The piece is in a key with one flat (Bb major or Dm) and 4/4 time.

61

Measures 61-63: The right hand has a whole rest in measure 61, followed by quarter notes G4, A4, and Bb4. The left hand has a half note G3, followed by quarter notes F3, E3, and D3. The piece is in a key with one flat (Bb major or Dm) and 4/4 time.

64

Measures 64-66: The right hand has a half note G4, followed by quarter notes A4, Bb4, and C5. The left hand has a half note G3, followed by quarter notes F3, E3, and D3. The piece is in a key with one flat (Bb major or Dm) and 4/4 time.

67

Measures 67-69: The right hand has a half note G4, followed by quarter notes A4, Bb4, and C5. The left hand has a half note G3, followed by quarter notes F3, E3, and D3. The piece is in a key with one flat (Bb major or Dm) and 4/4 time.

70

Measures 70-73: The right hand has a whole rest in measure 70, followed by quarter notes G4, A4, and Bb4. The left hand has a half note G3, followed by quarter notes F3, E3, and D3. The piece is in a key with one flat (Bb major or Dm) and 4/4 time.

74

Measures 74-77: The right hand has a half note G4, followed by quarter notes A4, Bb4, and C5. The left hand has a half note G3, followed by quarter notes F3, E3, and D3. The piece is in a key with one flat (Bb major or Dm) and 4/4 time.

The image displays a musical score for a piece by Heinrich Lassus, titled "Ego dixi - alla quinta bassa". The score is presented in two systems, measures 78-81. The notation is in a single system with a grand staff (treble and bass clefs). The key signature is one flat (B-flat). The time signature is not explicitly shown but is implied to be common time (C). The notation includes various note values (quarter, eighth, and sixteenth notes), rests, and bar lines. The first system (measures 78-80) shows a melodic line in the treble clef and a supporting line in the bass clef. The second system (measures 81) concludes the piece with a final cadence. The notation is clear and legible, with a focus on the melodic contour and harmonic support.

The editions 1576, 1577 and 1604, do not give bar lines, but it was usual to use them in keyboard intabulations.

The piece has been notated with chiavette or high clefs, meaning that it should be performed a fifth down. This is the version alla quinta bassa, a fifth down. I made an edition come stà, at is notated pitch, as well.

See my edition for voices or instruments for the text, translation and critical notes.