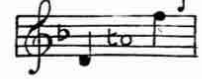


N°1 IN D^b



N°2 IN F



THINE

* SONG *

WORDS BY

P. J. O'REILLY

Music by

VALENTINE HEMERY.

COPYRIGHT MCMXIII
BY GOULD & CO

PRICE 2/- NET

GOULD & BOLTTLER
24, POLAND STREET,
LONDON, W.1.

New York: Edward Schuberth & Co. Agents

PRINTED IN ENGLAND

THINE.

WORDS BY
P. J. O'REILLY.

MUSIC BY
VALENTINE HEMERY.

Allegro con appassionata.

VOICE.

PIANO.

f

Risoluto.

rall.

a tempo.

cres.

I want no love but
thy love, I crave no heart but thine. To

thee, and to thee on - - ly, I raise a throne di -

- vine. As sun - beams to the sum - - mer, As

stars to win - ter night, So art thou love of

mine to me, My trea - sure and my light. I

want no love but thy love, I crave no heart but

p *rit.*

thine!

a tempo. *f*

The sun may sink in

Parlando. *rit.* *f*

dark - ness, The stars wane and de - - cay, The

cres.

sea be - come a de - sert, And worlds may pass a -

rall.

way. But the liv - - ing love I bear thee, So

Cantabile.

mf
colla voce.

pure and so di - vine, Shall through the years e -

stringendo.

accel.
cres.

- ter - nal flame And bind my soul to thine! And

f

allargando. *a tempo.*

bind my soul to thine! I want no love but

f allargando. *f a tempo.*

thy love, I crave no heart but thine, I

cres.

cres.

want no love but thy love! I crave no heart but

rit.

ff rit.

thine!

ff accel. *sf*

WHEN SKIES ARE GREY.

WORDS BY
NORMAN MERRICK.

MUSIC BY
ALBERT DURNFORD.

VOICE *Slowly.*

PIANO *f* *rall.*

espressivo

Give me one flow'r of hap - py mem - o - ry, Be -

p col voce

fore _____ you go a - way, _____

p *sf*