

# CHORALE PRELUDE

(from: 'Schmücke dich, o liebe Seele' - 1724)

Score (03':35")

Adapted for Trumpet and Organ

Peter Gerritz (1681 - 1728)

Arr. Michel Rondeau

1. Praeludium ♩ = 90

Trumpet in C

Organ

The first system of the Praeludium features a Trumpet in C and an Organ. The Trumpet part begins with a whole rest, followed by a melodic line of eighth and quarter notes. The Organ part provides a rhythmic accompaniment with a steady eighth-note pattern in the right hand and a more active bass line in the left hand.

C Tpt.

Org.

The second system continues the Praeludium. The C Trumpet part has a whole rest at the beginning, then enters with a melodic line. The Organ part maintains its accompaniment, with the right hand playing a consistent eighth-note pattern and the left hand providing harmonic support.

C Tpt.

Org.

The third system of the Praeludium shows the C Trumpet part continuing its melodic line. The Organ part's accompaniment remains consistent, with the right hand playing eighth notes and the left hand playing a more active bass line.

2. Choral

C Tpt.

Org.

The Choral section begins at measure 11. The C Trumpet part has a whole rest, followed by a melodic line with a fermata. The Organ part provides a harmonic accompaniment with a steady eighth-note pattern in the right hand and a more active bass line in the left hand.

## CHORALE PRELUDE - Gerritz - Score

C Tpt.

Org.

17

17

C Tpt.

Org.

22

22

C Tpt.

Org.

3. Variatio

28

28

C Tpt.

Org.

34

34

CHORALE PRELUDE - Gerritz - Score

C Tpt.

Org.

Measures 39-43 of the score. The C Tpt. part (top staff) begins with a melodic line in measure 39, marked with a trill (tr) and a fermata. The Organ part (middle and bottom staves) provides accompaniment with chords and moving lines. Measure 40 features a repeat sign. Measure 41 has a trill (tr) and a fermata. Measure 42 has a trill (tr) and a fermata. Measure 43 ends with a fermata.

C Tpt.

Org.

Measures 44-49 of the score. The C Tpt. part (top staff) has a melodic line in measure 44, marked with a trill (tr) and a fermata. The Organ part (middle and bottom staves) continues with accompaniment. Measure 45 has a trill (tr) and a fermata. Measure 46 has a trill (tr) and a fermata. Measure 47 has a trill (tr) and a fermata. Measure 48 has a trill (tr) and a fermata. Measure 49 ends with a fermata.

C Tpt.

Org.

Measures 50-54 of the score. The C Tpt. part (top staff) has a melodic line in measure 50, marked with a fermata. The Organ part (middle and bottom staves) continues with accompaniment. Measure 51 has a fermata. Measure 52 has a fermata. Measure 53 has a fermata. Measure 54 ends with a fermata.

# CHORALE PRELUDE

(from: 'Schmücke dich, o liebe Seele' - 1724)

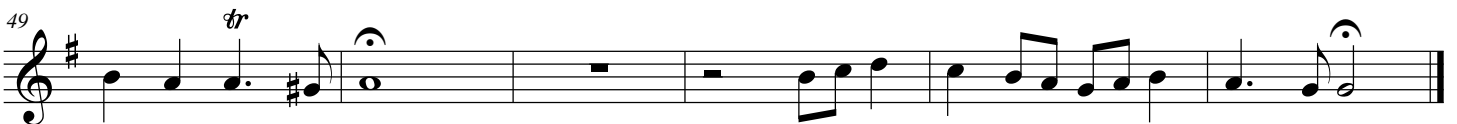
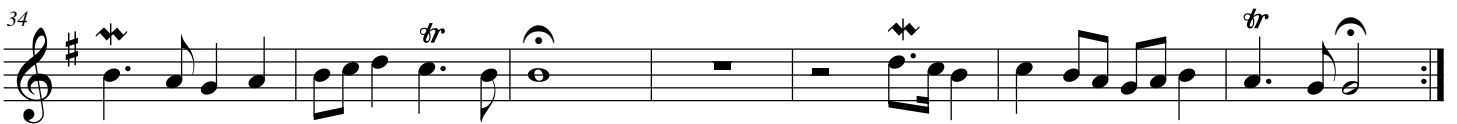
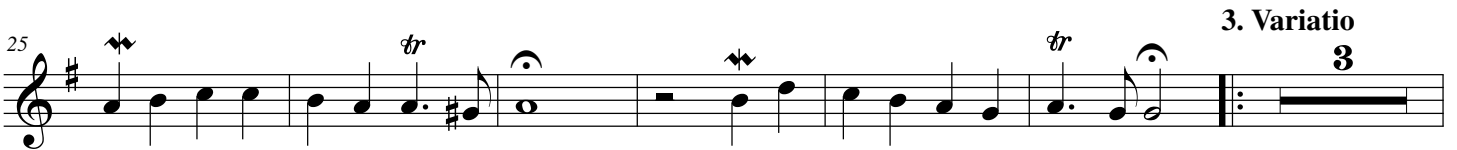
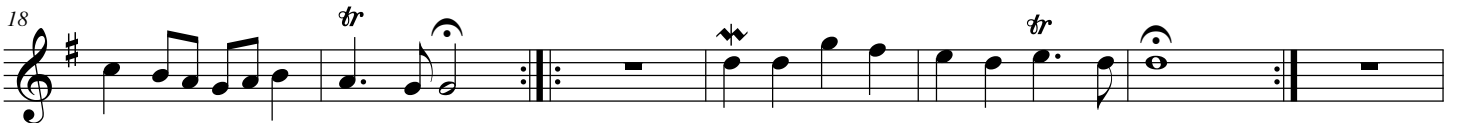
Adapted for Trumpet and Organ

## Trumpet in B $\flat$

Peter Gerritz (1681 - 1728)

Arr. Michel Rondeau

### 1. Praeludium $\text{♩} = 90$



# CHORALE PRELUDE

(from: 'Schmücke dich, o liebe Seele' - 1724)

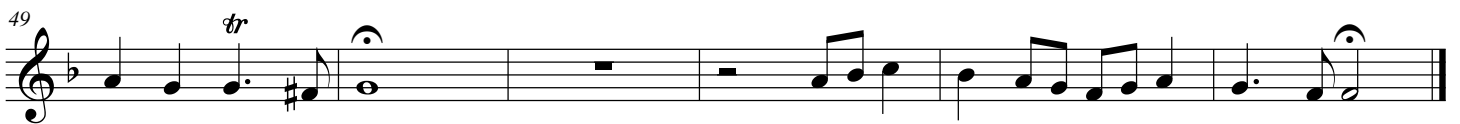
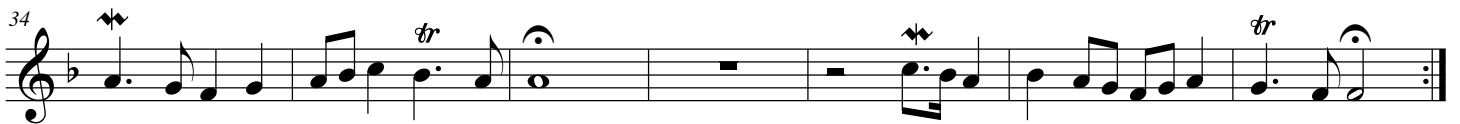
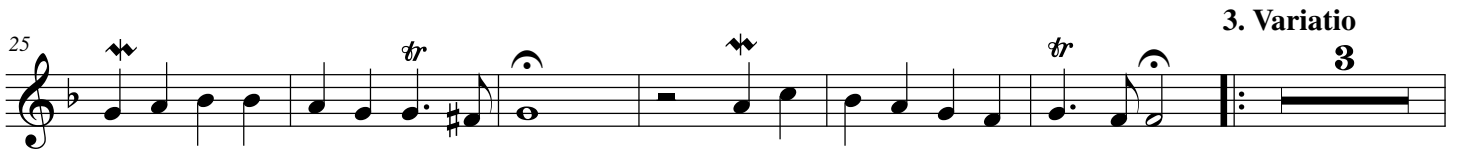
Adapted for Trumpet and Organ

## Trumpet in C

Peter Gerritz (1681 - 1728)

Arr. Michel Rondeau

### 1. Praeludium $\text{♩} = 90$



# CHORALE PRELUDE

(from: 'Schmücke dich, o liebe Seele' - 1724)

Adapted for Trumpet and Organ

Peter Gerritz (1681 - 1728)

Arr. Michel Rondeau

## Organ

Trumpet in C

1. Praeludium ♩ = 90

C Tpt.

Org.

C Tpt.

Org.

C Tpt.

Org.

2. Choral

CHORALE PRELUDE - Gerritz - Organ

C Tpt. 17

Org. 17

C Tpt. 22

Org. 22

C Tpt. 28

Org. 28

3. Variatio

C Tpt. 34

Org. 34

CHORALE PRELUDE - Gerritz - Organ

C Tpt. <sup>39</sup>

Org. <sup>39</sup>

This system contains measures 39 through 43. The C Tpt. part (top staff) begins with a treble clef, a key signature of one flat, and a common time signature. It features a melodic line with a trill (tr) over the second measure and a repeat sign at the end of the first phrase. The Organ part (bottom two staves) is in bass clef and provides a harmonic accompaniment with chords and moving lines. The organ part also includes a trill (tr) over the second measure and a repeat sign.

C Tpt. <sup>44</sup>

Org. <sup>44</sup>

This system contains measures 44 through 48. The C Tpt. part continues the melodic line with a trill (tr) over the second measure and a sharp sign (#) appearing in the final measure. The Organ part continues its accompaniment with a trill (tr) over the second measure and a sharp sign (#) in the final measure.

C Tpt. <sup>50</sup>

Org. <sup>50</sup>

This system contains measures 50 through 54. The C Tpt. part has a whole rest in the first measure, followed by a melodic line. The Organ part continues with a trill (tr) in the first measure and a repeat sign at the end of the system.