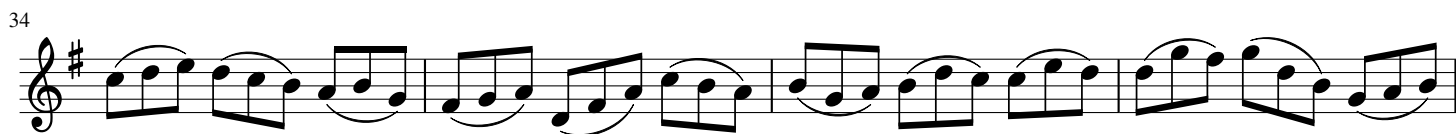


Orchestra Soprano

6. & 10. ChoralFesto Visitationis Mariae.

BWV 147

Johann Sebastian Bach (1685 - 1750)



Orchestra Alto

Festo Visitationis Mariae.

BWV 147

6. & 10. Choral.

Johann Sebastian Bach (1685 - 1750)

The image displays a musical score for the Orchestra Alto part of Johann Sebastian Bach's 'Feste Visitationis Mariae', BWV 147. The score is written in treble clef with a key signature of one sharp (F#) and a 3/4 time signature. It consists of 12 staves of music, with measure numbers 6, 7, 15, 21, 29, 35, 41, 47, 52, 57, 62, and 67 indicated at the beginning of each staff. The music features a consistent eighth-note rhythmic pattern with various melodic lines. There are two instances of a fermata with a '2' above it, occurring at measures 15-16 and 21-22. The score concludes with a final measure (67) ending in a double bar line.

Orchestra Tenore

6. & 10. ChoralFesto Visitationis Mariae.

BWV 147

Johann Sebastian Bach (1685 - 1750)

8

12

21

31

40

50

58

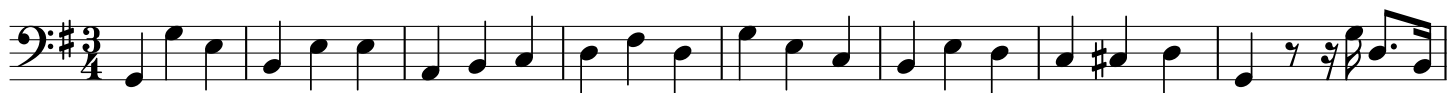
65

Orchestra Basso

6. & 10. ChoralFesto Visitationis Mariae.

BWV 147

Johann Sebastian Bach (1685 - 1750)



9



16



24



31



39



46



54



62

