

Oboe 2

“Per Questa Bella Mano”

W.A. Mozart (1756-1791)

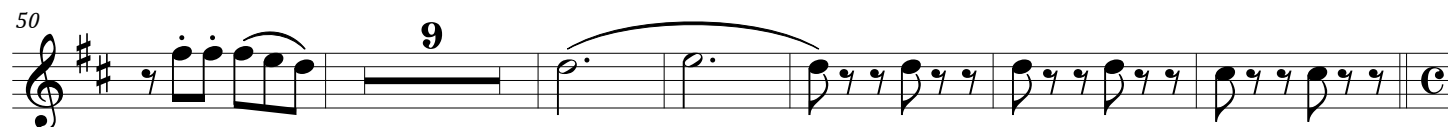
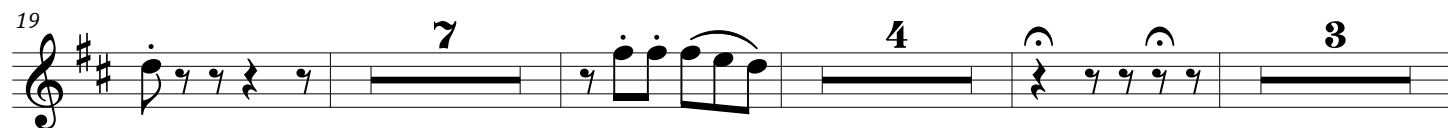
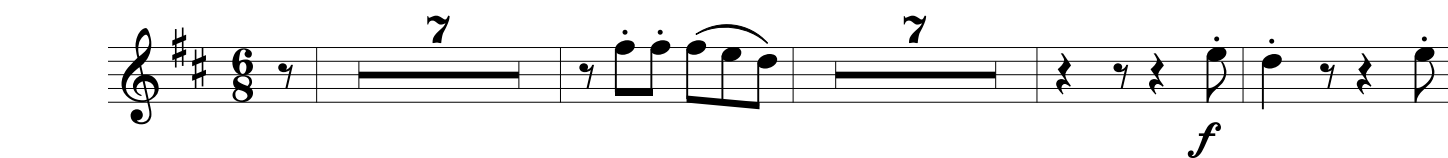
ARIA for Bass with Orchestral

K. 612

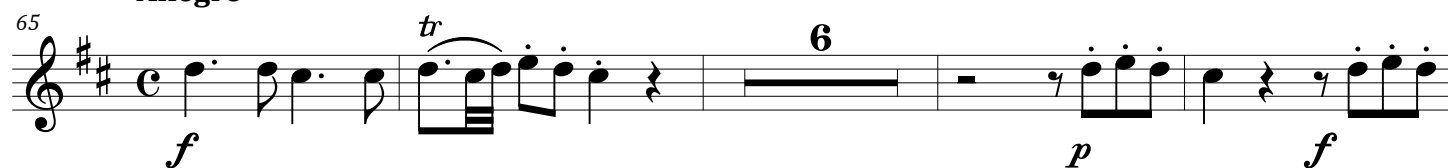
Accompaniment and with obbligato Double Bass

Engraved by S.A. Jawadiwar

Andante

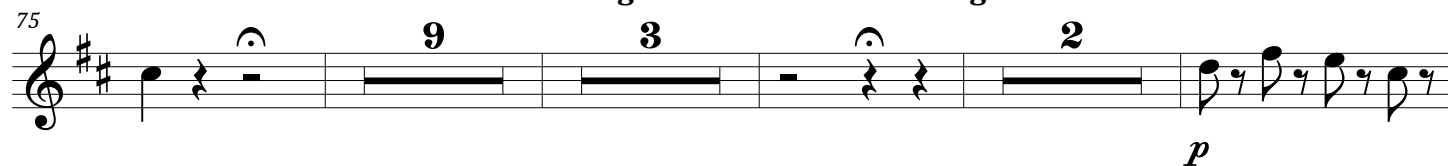


Allegro



Adagio

Allegro



"Per Questa Bella Mano"

Adagio

Allegro

99

9 3 6

f

Detailed description: This musical staff covers measures 99 to 119. It begins with a treble clef and a key signature of two sharps (F# and C#). Measure 99 starts with a whole rest, followed by a quarter rest, then a dotted quarter note G4, an eighth note A4, and a dotted eighth note B4. Measure 100 has a quarter note A4, a quarter rest, and a whole note G4. Measures 101-102 contain a whole rest. Measures 103-104 contain a whole note G4. Measures 105-106 contain a whole rest. Measures 107-108 contain a whole note G4. Measures 109-110 contain a whole rest. Measures 111-112 contain a whole note G4. Measures 113-114 contain a whole rest. Measures 115-116 contain a whole note G4. Measures 117-118 contain a whole rest. Measure 119 contains a whole note G4. The dynamics *f* is written below measure 99. The numbers 9, 3, and 6 are written above measures 101, 103, and 105 respectively, indicating fingerings for the G notes.

120

p

Detailed description: This musical staff covers measures 120 to 122. It begins with a treble clef and a key signature of two sharps (F# and C#). Measure 120 has a whole note G4. Measure 121 has a whole note G4. Measure 122 has a whole note G4. The dynamic *p* is written below measure 120. A slur connects the G notes in measures 120 and 121.

123

4

f

Detailed description: This musical staff covers measures 123 to 132. It begins with a treble clef and a key signature of two sharps (F# and C#). Measure 123 has a whole note G4. Measure 124 has a whole note G4. Measure 125 has a whole note G4. Measure 126 has a quarter note A4, a quarter rest, and a whole note G4. Measures 127-128 contain a whole note G4. Measures 129-130 contain a whole note G4. Measures 131-132 contain a whole note G4. The dynamic *f* is written below measure 130. The number 4 is written above measure 127, indicating a fingering for the G note.

133

tr

Detailed description: This musical staff covers measures 133 to 142. It begins with a treble clef and a key signature of two sharps (F# and C#). Measure 133 has a dotted quarter note G4, an eighth note A4, and a dotted eighth note B4. Measure 134 has a quarter note A4, a quarter rest, and a whole note G4. Measure 135 has a dotted quarter note G4, an eighth note A4, and a dotted eighth note B4. Measure 136 has a quarter note A4, a quarter rest, and a whole note G4. Measures 137-138 contain a whole note G4. Measures 139-140 contain a whole note G4. Measures 141-142 contain a whole note G4. The dynamic *tr* is written above measure 133, indicating a trill.