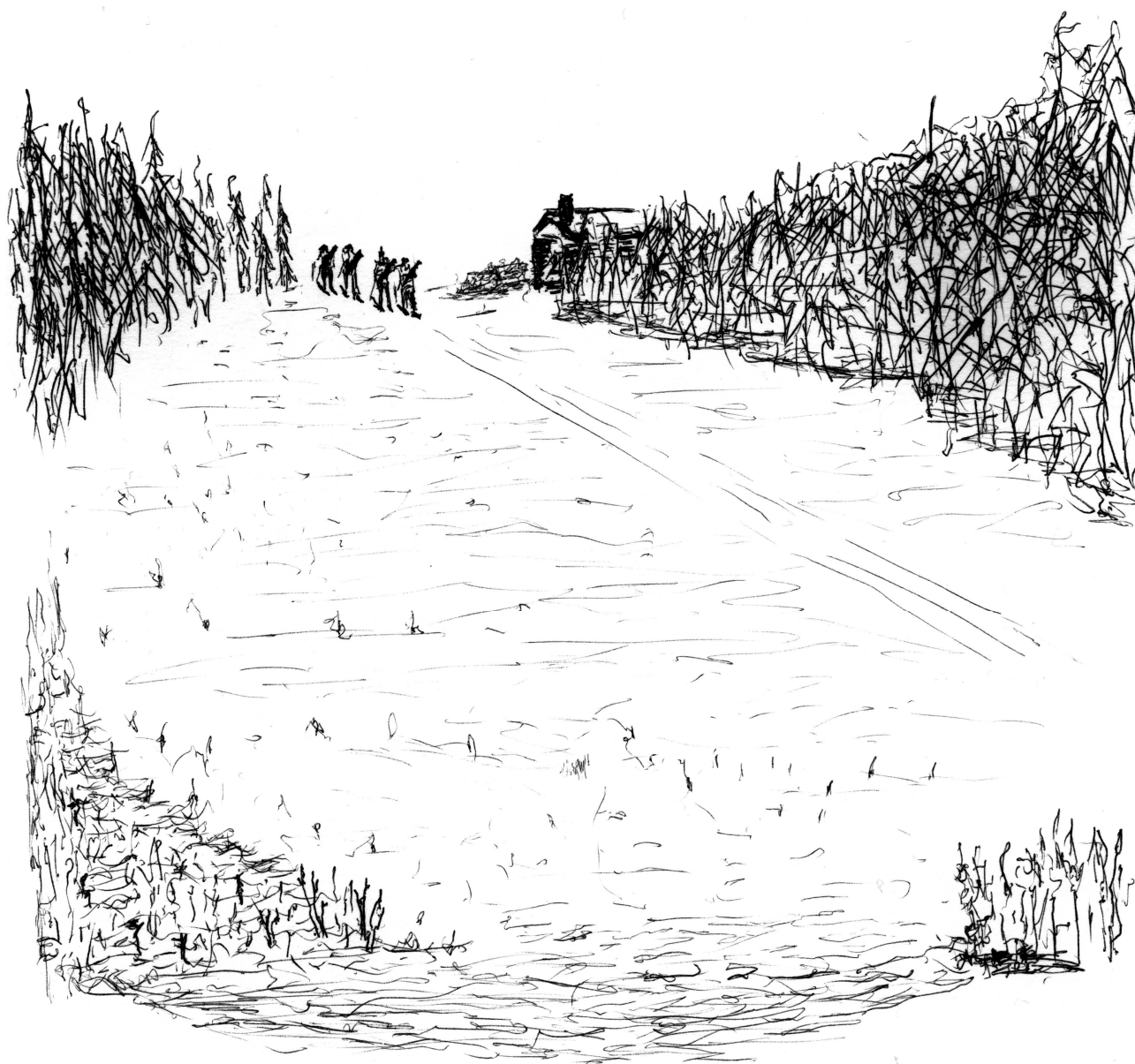


Clarinet in B \flat II

Sinfonietta "The Unknown"



Peter Dyson
2003

First Episode.

Into Action - 30th November 1939

Allegro con moto (♩ = 110)

2 5

p *mf*

3 10 3

mf *f*

15 **A** 10 25 **B** 7

C 9 **D** 45

f *f* *f*

50 2

ff *ff*

E 7 **F**

mf

65 *mf*

70 *mf* *mf*

G 75 4 80

mf *f*

© Copyright 2003 Peter Dyson



Licensed under Creative Commons Attribution Non-commercial No Derivatives 4.0

H **13**

I **11** **J** **26** **135**

2 **140**

145 **K** **16** **L** **2** **165**

170

175 **M** **4** **185**

190 **N** **3** **18**

210 **O** **8** **220**

225 **230**

Clarinet in B \flat II

Second Episode.

Breakthrough - 12th February 1939

1 Grave moderato ($\text{♩} = 60$)

13 A 22

B 18 C 32

D 5

p *f* *ff* *p*

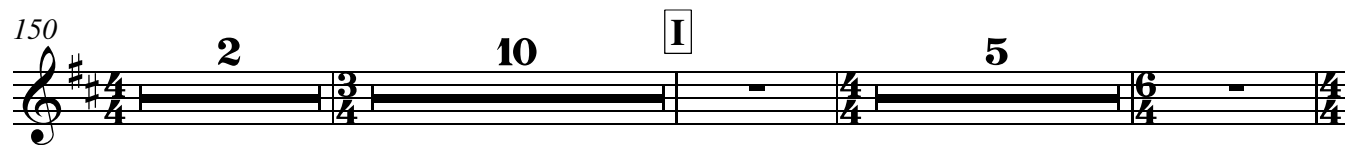
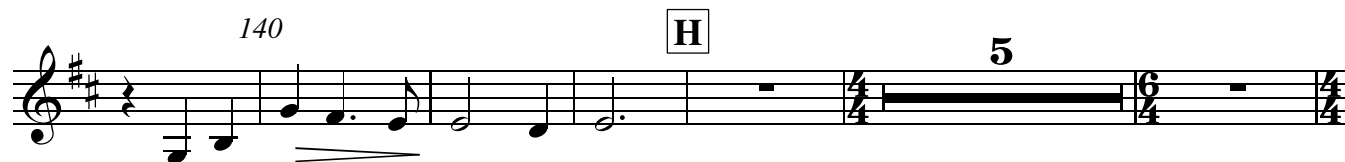
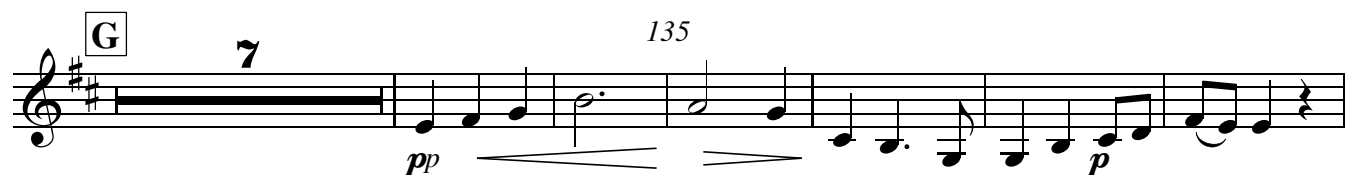
95

f *ff* *p*

100

ff *p*

E 13 F 9



Clarinet in B \flat II

Third Episode.

Aftermath - 13th March 1940

Allegro non troppo (♩ = 100)

1 18 **A** 20

mf mf

25 $\underline{3}$

mf mf mf

30 $\underline{3}$ $\underline{3}$ $\underline{3}$

mf 35

mf $\underline{3}$ f

B 40 $\underline{3}$ $\underline{3}$

f f

45 $\underline{3}$ $\underline{3}$

f f f

50 $\underline{3}$ $\underline{3}$ 55

C 60

f

65

f

Clarinet in B♭ II

70 **D** 75

f 80 *f* 85

E 90 **40**

F 135 **27**

G 165

170

175 *mf*

180

185 **H** *f* *mf* **2**

Clarinet in B \flat II

190 **2** **2** 195
mf *mf* *mf* *mf*

200 **I** **8**
p

13 230
mf

235 **J** **22**
p *p*

260 **6** **K** **58**
mf

325 **L** 330
f

335 **4**

M **31** rit. ($\bullet = 95$) **3**

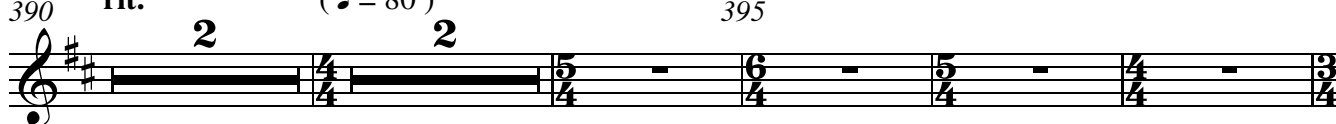
Detailed description: This page of a musical score for Clarinet in B-flat II contains measures 190 through 330. The music is written in a single staff with a treble clef and a key signature of two sharps (F# and C#). The score is divided into several systems, each containing multiple measures. Measure numbers are placed above the staff at the beginning of each system. Rehearsal marks are indicated by boxed letters: I, J, K, L, and M. Dynamic markings include *mf* (mezzo-forte), *p* (piano), and *f* (forte). Performance instructions include accents, slurs, and a ritardando (rit.) marking. Some measures contain rests, and there are several long horizontal lines representing sustained notes or rests. The tempo is marked as $\bullet = 95$ in the final system.

rit. (♩ = 90) **6** rit. **N** (♩ = 85) **6**



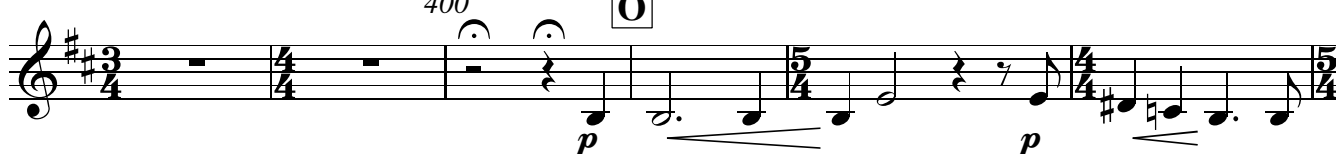
A musical staff in treble clef with a key signature of two sharps (F# and C#). It contains two measures of rests. The first measure is marked with a '6' above it, and the second measure is marked with an 'N' in a box above it. The tempo is indicated as 'rit.' (ritardando) and '(♩ = 90)' for the first measure, and 'rit.' and '(♩ = 85)' for the second measure.

390 rit. (♩ = 80) 395



A musical staff in treble clef with a key signature of two sharps. It contains six measures of rests. The first measure is marked with a '2' above it, and the second measure is marked with a '2' above it. The tempo is indicated as 'rit.' and '(♩ = 80)'. The measure numbers 390 and 395 are placed above the first and fifth measures respectively.

400 **O**



A musical staff in treble clef with a key signature of two sharps. It contains six measures of music. The first measure is a whole rest. The second measure is a whole rest. The third measure has a half note with a fermata above it. The fourth measure has a quarter note. The fifth measure has a quarter note. The sixth measure has a quarter note. The tempo is indicated as 'p' (piano). The measure number 400 is placed above the third measure, and a circled 'O' is placed above the fourth measure.

405



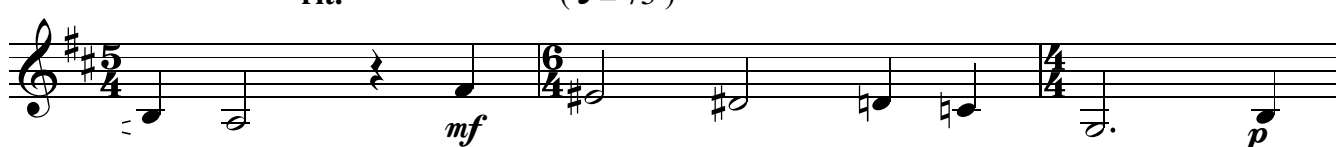
A musical staff in treble clef with a key signature of two sharps. It contains six measures of music. The first measure has a quarter note. The second measure has a quarter note. The third measure has a quarter note. The fourth measure has a quarter note. The fifth measure has a quarter note. The sixth measure has a quarter note. The tempo is indicated as 'p' (piano) for the first measure, 'p' for the second, and 'pp' (pianissimo) for the third. The measure number 405 is placed above the first measure.

P 410



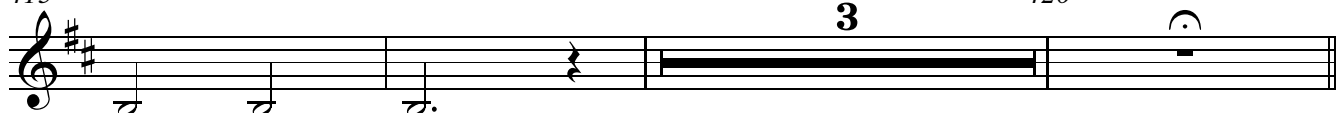
A musical staff in treble clef with a key signature of two sharps. It contains six measures of music. The first measure has a quarter note. The second measure has a quarter note. The third measure has a quarter note. The fourth measure has a quarter note. The fifth measure has a quarter note. The sixth measure has a quarter note. The tempo is indicated as 'p' (piano) for the fourth measure. The measure number 410 is placed above the first measure, and a circled 'P' is placed above the first measure.

rit. (♩ = 75)



A musical staff in treble clef with a key signature of two sharps. It contains six measures of music. The first measure has a quarter note. The second measure has a quarter note. The third measure has a quarter note. The fourth measure has a quarter note. The fifth measure has a quarter note. The sixth measure has a quarter note. The tempo is indicated as 'rit.' and '(♩ = 75)'. The measure number 415 is placed above the first measure, and 'mf' (mezzo-forte) is placed below the third measure, and 'p' (piano) is placed below the sixth measure.

415 **3** 420



A musical staff in treble clef with a key signature of two sharps. It contains six measures of music. The first measure has a quarter note. The second measure has a quarter note. The third measure has a quarter note. The fourth measure has a quarter note. The fifth measure has a quarter note. The sixth measure has a quarter note. The measure number 415 is placed above the first measure, and the measure number 420 is placed above the fifth measure. A circled '3' is placed above the fifth measure.