

Parthia B-Dur

(PadK 4.30)

Franz Krommer

Allegro moderato

Fagott 1

Measures 1-4. Dynamics: *f*, *p*.

5

Measures 5-8. Dynamics: *f*, *p*.

10

Measures 9-12. Dynamics: *f*, *p*.

15

Measures 13-16. Dynamics: *f*, *p*.

20

Measures 17-20. Dynamics: *f*.

23

Measures 21-24. Dynamics: *p*.

27

Measures 25-28. Dynamics: *p*.

32

Measures 29-32. Dynamics: *f*.

38

Measures 33-38. Dynamics: *f*.

42

Measures 39-42. Dynamics: *f*.

46

51

56

61

66

71

76

81

86

91

96

101

Musical notation for measure 101, bass clef, key signature of two flats. The measure contains a sequence of eighth notes: G2, F2, E2, D2, C2, B1, A1, G1, F1, E1, D1, C1. A slur covers the first two notes (G2, F2), with a fermata over the F2. A dynamic marking of *f* is placed below the measure.

106

Musical notation for measure 106, bass clef, key signature of two flats. The measure contains a sequence of eighth notes: G2, F2, E2, D2, C2, B1, A1, G1, F1, E1, D1, C1. A dynamic marking of *p* is placed below the first note. A slur covers the last six notes (B1, A1, G1, F1, E1, D1), with a dynamic marking of *f* placed below the measure. A dynamic marking of *p* is placed below the last note.

111

Musical notation for measure 111, bass clef, key signature of two flats. The measure contains a sequence of eighth notes: G2, F2, E2, D2, C2, B1, A1, G1, F1, E1, D1, C1. A dynamic marking of *f* is placed below the measure.

115

Musical notation for measure 115, bass clef, key signature of two flats. The measure contains a sequence of eighth notes: G2, F2, E2, D2, C2, B1, A1, G1, F1, E1, D1, C1.

119

Musical notation for measure 119, bass clef, key signature of two flats. The measure contains a sequence of eighth notes: G2, F2, E2, D2, C2, B1, A1, G1, F1, E1, D1, C1. A dynamic marking of *p* is placed below the measure.

124

Musical notation for measure 124, bass clef, key signature of two flats. The measure contains a sequence of eighth notes: G2, F2, E2, D2, C2, B1, A1, G1, F1, E1, D1, C1. A dynamic marking of *f* is placed below the measure.

129

Musical notation for measure 129, bass clef, key signature of two flats. The measure contains a sequence of eighth notes: G2, F2, E2, D2, C2, B1, A1, G1, F1, E1, D1, C1.

132

Musical notation for measure 132, bass clef, key signature of two flats. The measure contains a sequence of eighth notes: G2, F2, E2, D2, C2, B1, A1, G1, F1, E1, D1, C1.

136

Musical notation for measure 136, bass clef, key signature of two flats. The measure contains a sequence of eighth notes: G2, F2, E2, D2, C2, B1, A1, G1, F1, E1, D1, C1. A dynamic marking of *f* is placed below the first note. A dynamic marking of *p* is placed below the last note.

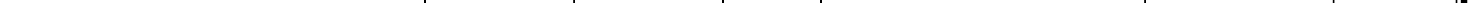
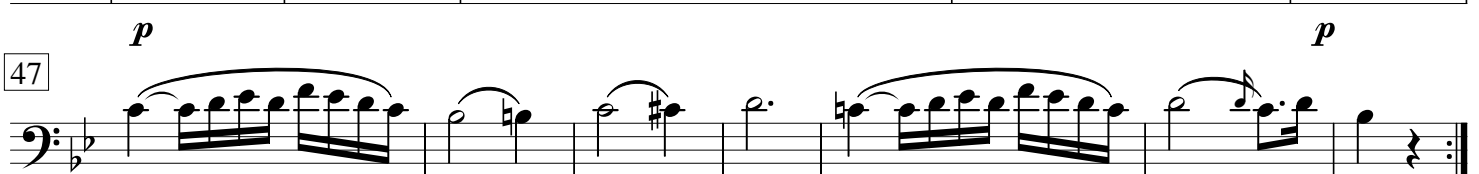
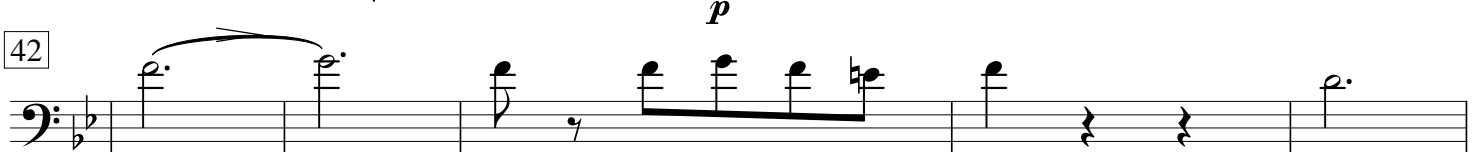
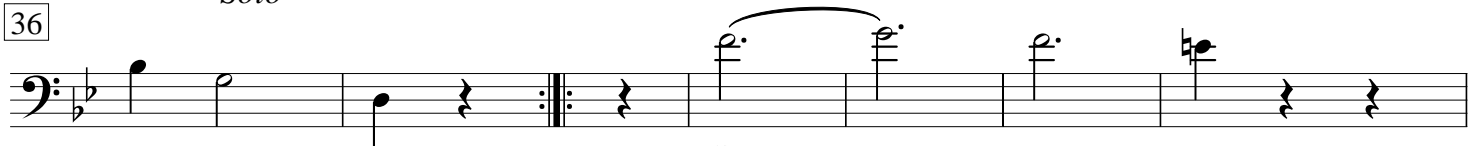
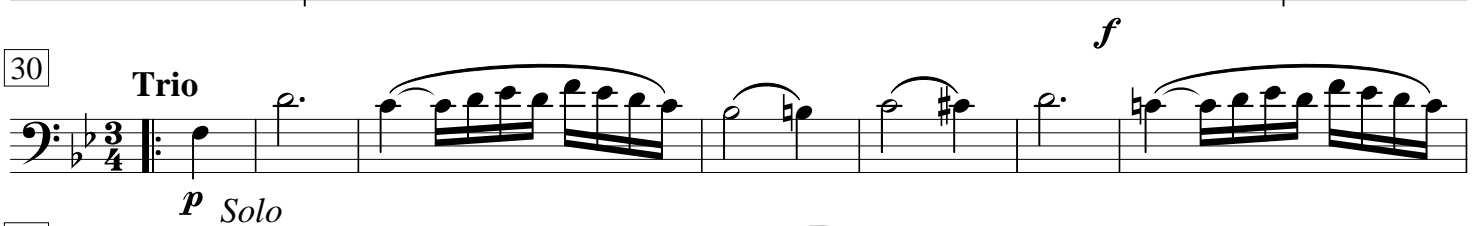
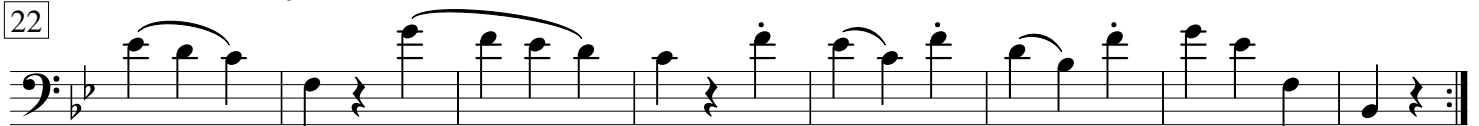
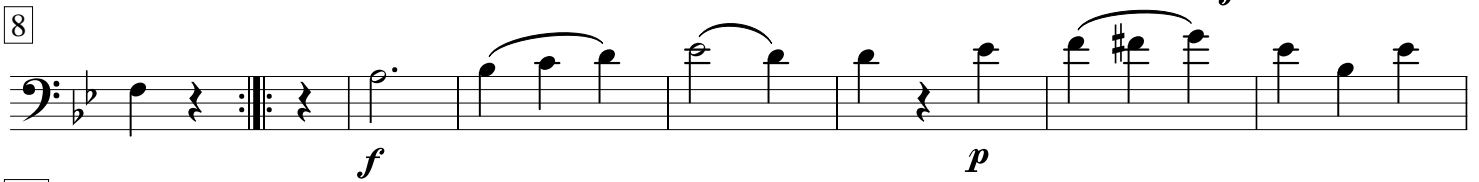
140

Musical notation for measure 140, bass clef, key signature of two flats. The measure contains a sequence of eighth notes: G2, F2, E2, D2, C2, B1, A1, G1, F1, E1, D1, C1. A dynamic marking of *p* is placed below the measure.

144

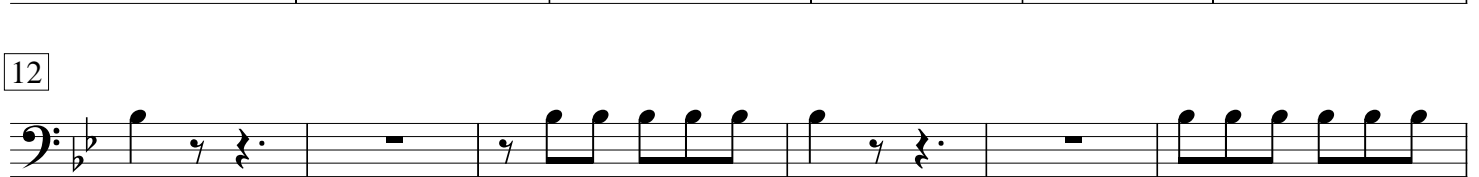
Musical notation for measure 144, bass clef, key signature of two flats. The measure contains a sequence of eighth notes: G2, F2, E2, D2, C2, B1, A1, G1, F1, E1, D1, C1. A dynamic marking of *p* is placed below the first note. A dynamic marking of *pp* is placed below the last note.

Menuetto



Menuetto da capo

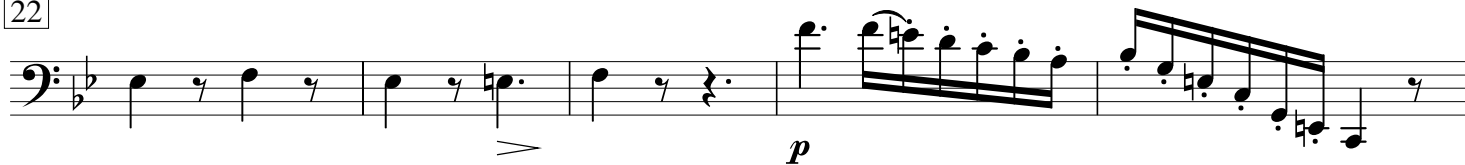
Andante



18



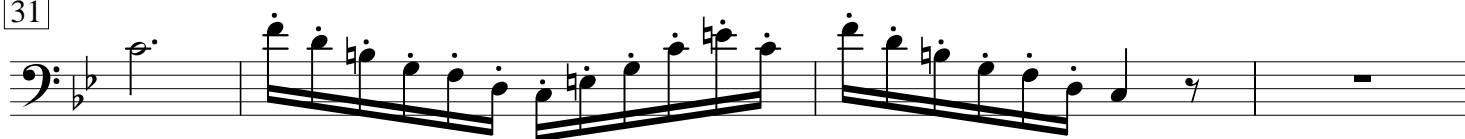
22



27



31



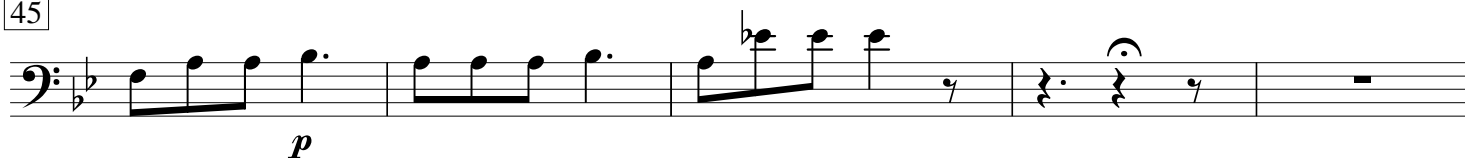
35



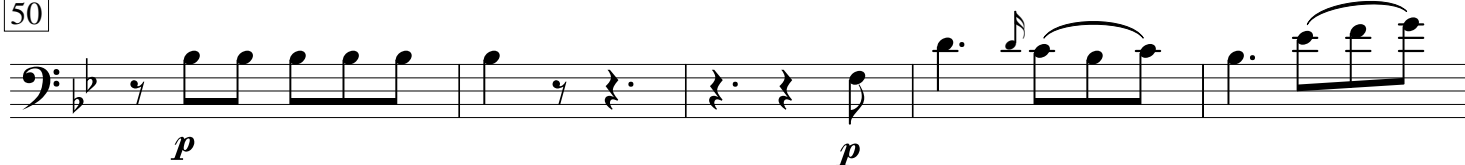
40



45



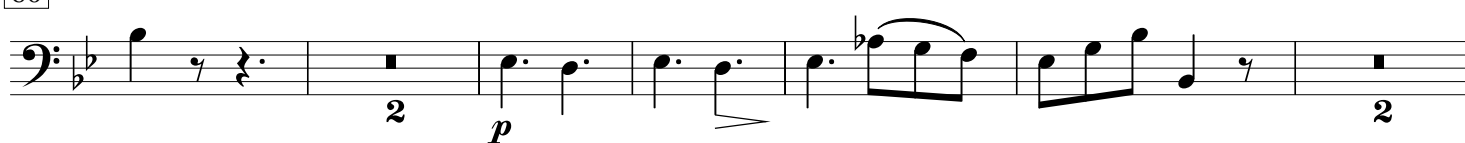
50



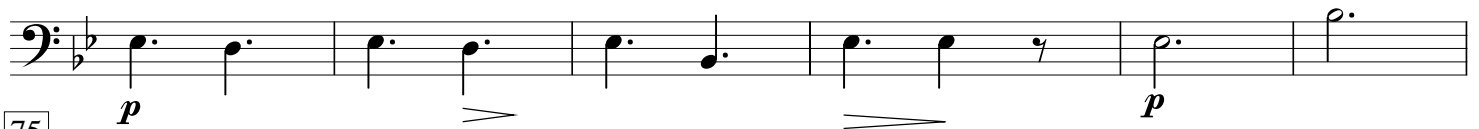
55



60



69



75



80



83



87



93



98



102



Rondo



18



25



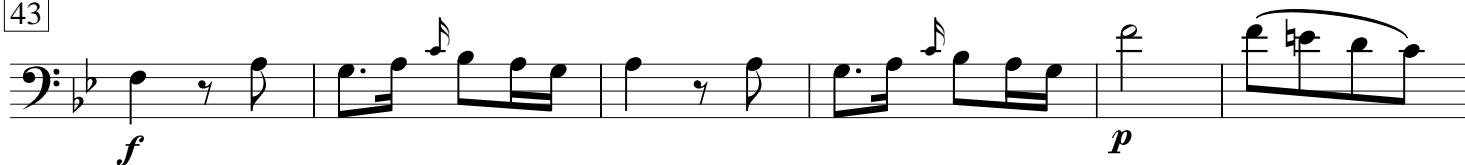
31



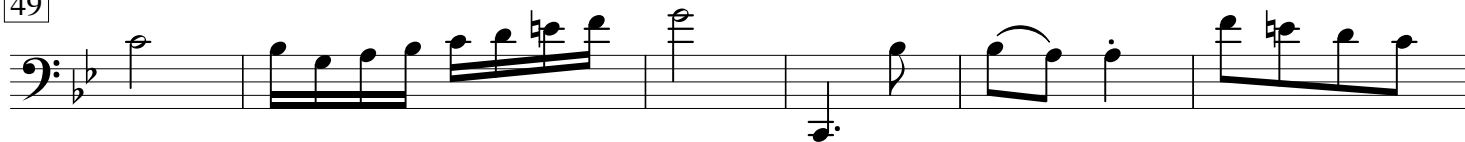
37



43



49



55



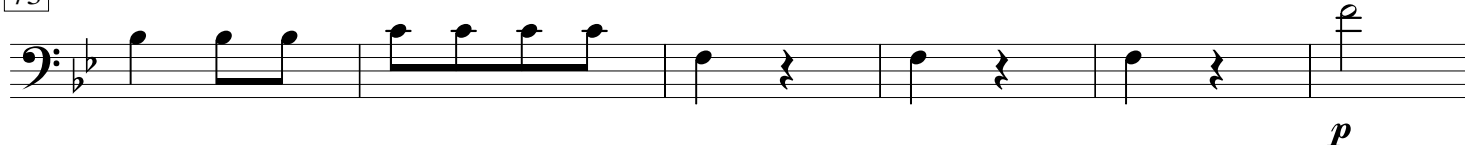
61



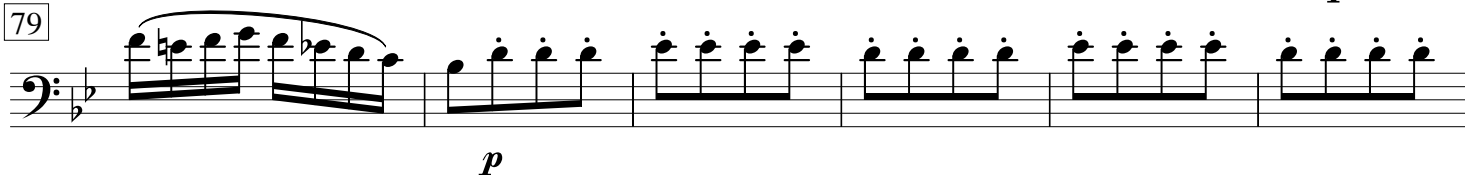
67



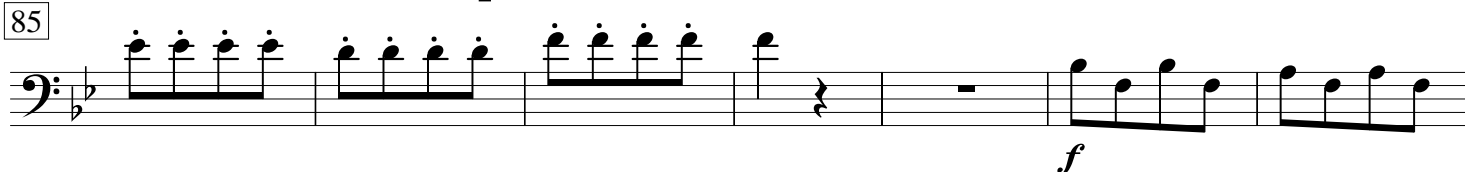
73



79



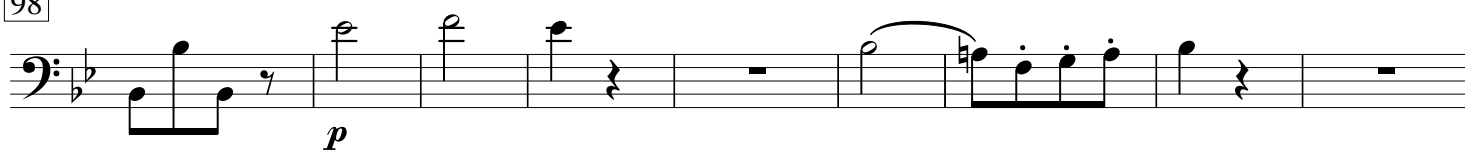
85



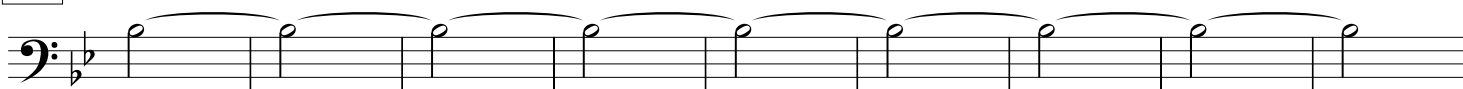
92



98



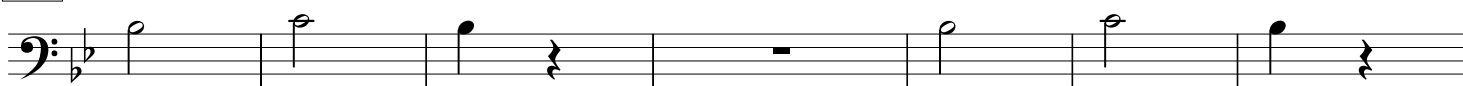
107



116



123



130



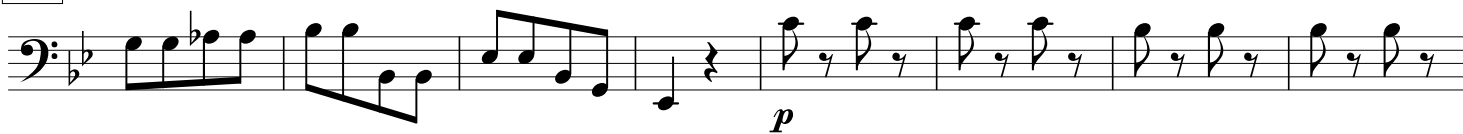
137



144



151



159



166



172

Musical notation for measure 172, bass clef, B-flat major. The measure contains a sequence of eighth notes: G2, F2, E2, D2, C2, B1, A1, G1. The first four notes are beamed together. The fifth note (C2) has a sharp sign above it. The sixth note (B1) has a flat sign above it. The seventh note (A1) has a sharp sign above it. The eighth note (G1) has a flat sign above it. The measure ends with a fermata over the G1 note, followed by a rest. The dynamic marking *f* is placed below the staff.

179

Musical notation for measure 179, bass clef, B-flat major. The measure contains a sequence of eighth notes: G2, F2, E2, D2, C2, B1, A1, G1. The notes are beamed in pairs: (G2, F2), (E2, D2), (C2, B1), (A1, G1). The measure ends with a fermata over the G1 note.

185

Musical notation for measure 185, bass clef, B-flat major. The measure contains a sequence of eighth notes: G2, F2, E2, D2, C2, B1, A1, G1. The first four notes are beamed together. The fifth note (C2) has a sharp sign above it. The sixth note (B1) has a flat sign above it. The seventh note (A1) has a sharp sign above it. The eighth note (G1) has a flat sign above it. The measure ends with a fermata over the G1 note, followed by a rest. The dynamic marking *p* is placed below the staff.

191

Musical notation for measure 191, bass clef, B-flat major. The measure contains a sequence of eighth notes: G2, F2, E2, D2, C2, B1, A1, G1. The first four notes are beamed together. The fifth note (C2) has a sharp sign above it. The sixth note (B1) has a flat sign above it. The seventh note (A1) has a sharp sign above it. The eighth note (G1) has a flat sign above it. The measure ends with a fermata over the G1 note, followed by a rest. The dynamic marking *f* is placed below the staff.

197

Musical notation for measure 197, bass clef, B-flat major. The measure contains a sequence of eighth notes: G2, F2, E2, D2, C2, B1, A1, G1. The first four notes are beamed together. The fifth note (C2) has a sharp sign above it. The sixth note (B1) has a flat sign above it. The seventh note (A1) has a sharp sign above it. The eighth note (G1) has a flat sign above it. The measure ends with a fermata over the G1 note, followed by a rest. The dynamic marking *p* is placed below the staff.

203

Musical notation for measure 203, bass clef, B-flat major. The measure contains a sequence of eighth notes: G2, F2, E2, D2, C2, B1, A1, G1. The first four notes are beamed together. The fifth note (C2) has a sharp sign above it. The sixth note (B1) has a flat sign above it. The seventh note (A1) has a sharp sign above it. The eighth note (G1) has a flat sign above it. The measure ends with a fermata over the G1 note, followed by a rest. The dynamic marking *f* is placed below the staff.

210

Musical notation for measure 210, bass clef, B-flat major. The measure contains a sequence of eighth notes: G2, F2, E2, D2, C2, B1, A1, G1. The first four notes are beamed together. The fifth note (C2) has a sharp sign above it. The sixth note (B1) has a flat sign above it. The seventh note (A1) has a sharp sign above it. The eighth note (G1) has a flat sign above it. The measure ends with a fermata over the G1 note, followed by a rest. The dynamic marking *f* is placed below the staff.

218

Musical notation for measure 218, bass clef, B-flat major. The measure contains a sequence of eighth notes: G2, F2, E2, D2, C2, B1, A1, G1. The first four notes are beamed together. The fifth note (C2) has a sharp sign above it. The sixth note (B1) has a flat sign above it. The seventh note (A1) has a sharp sign above it. The eighth note (G1) has a flat sign above it. The measure ends with a fermata over the G1 note, followed by a rest.

225

Musical notation for measure 225, bass clef, B-flat major. The measure contains a sequence of eighth notes: G2, F2, E2, D2, C2, B1, A1, G1. The first four notes are beamed together. The fifth note (C2) has a sharp sign above it. The sixth note (B1) has a flat sign above it. The seventh note (A1) has a sharp sign above it. The eighth note (G1) has a flat sign above it. The measure ends with a fermata over the G1 note, followed by a rest. The dynamic marking *f* is placed below the staff.