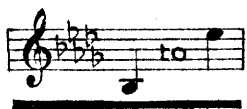


NO 1 IN D<sup>b</sup>.



NO 2 IN E<sup>b</sup>.



# CYRIL SCOTT.

## NIGHT SONG

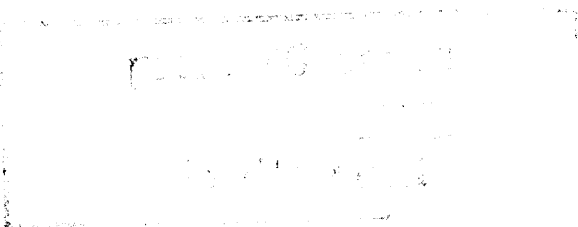
COMPOSED FOR

VOICE & PIANOFORTE

WORDS BY

ROSAMUND MARRIOTT WATSON.

price ~~60 c.~~  
copyright, mcmxv,  
by Elkin & Co., Ltd.  
may be sung in public  
without fee or license.



New York:  
G. Ricordi & Co.,  
14, East 43<sup>rd</sup> Street,  
London: Elkin & Co., Ltd.

## NIGHT- SONG.

Who is it sings the gypsies' song to-night  
 To muted strings  
 Deep in the linden shade beyond the light,  
 My casement flings?

Can it be Death who sings. Ah no, not he,  
 For he is old,—  
 His voice is like the murmur of the sea,  
 When light grows cold.

Who is it sings once more, once more again  
 The gypsy song?—  
 Song of the open road, the starry plain  
 Estranged so long.

Come to the woods, come for the woods are green,  
 The sweet airs blow  
 The hawthorn boughs the forest boles between  
 Are white as snow.

The wet leaves stir; the dim trees dream again  
 Of vanished Springs:—  
 Out in the night, out in the slow, soft rain,  
 My lost youth sings.

*Rosamund Marriott Watson.*


For George Whitehouse.

# NIGHT- SONG.

Words by  
ROSAMUND MARRIOTT WATSON.

CYRIL SCOTT.

*Allegretto moderato.*

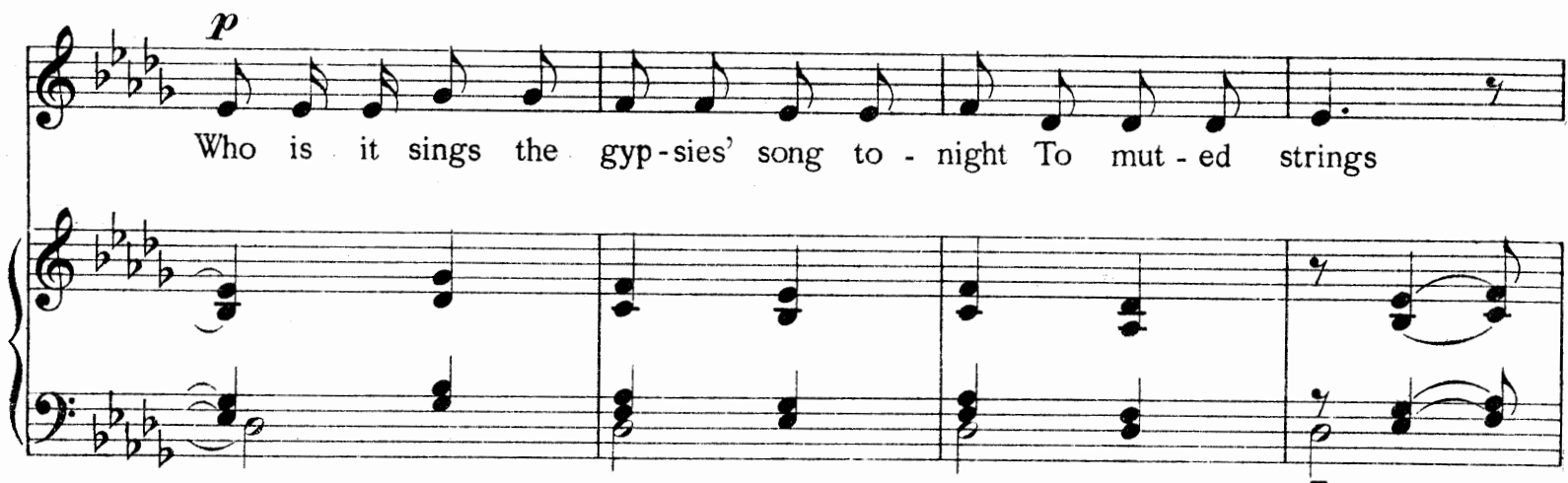
VOICE. 

PIANO. *p molto legato*  
*una Corda*



*dim.*

*p*  
Who is it sings the gyp-sies' song to - night To mut - ed strings



Deep in the lin - den shade be - yond the

light, My case - ment flings?

Can it be Death who sings. Ah no, not he, For he is

old,- His voice is like the mur - mur of the

*ten.*  
 sea, When light grows cold.

Who is it sings once more, once more a -

- gain The gyp - sy song? - Song of the o - pen

road, the star - ry plain Es - tranged so long.

*mf* 3  
Come to the woods, come, for the woods are

*mf*  
Ped. \*

Detailed description: This system contains the first two measures of the piece. The vocal line begins with a rest, followed by a triplet of eighth notes (G4, A4, B4) and a quarter note (C5). The piano accompaniment features a bass line with a half note (G3) and a quarter note (A3), and a treble line with a half note (G4) and a quarter note (A4). A piano dynamic marking (*mf*) is present in both parts. Pedal and asterisk markings are located below the piano part.

green, The sweet airs blow The haw - thorn

Detailed description: This system contains measures 3 and 4. The vocal line continues with a quarter note (D5), a quarter note (E5), and a quarter note (F5). The piano accompaniment continues with a half note (G4) and a quarter note (A4) in the bass, and a half note (G4) and a quarter note (A4) in the treble.

boughs the for - est boles be - tween Are

Detailed description: This system contains measures 5 and 6. The vocal line continues with a quarter note (G4), a quarter note (A4), and a quarter note (B4). The piano accompaniment continues with a half note (G4) and a quarter note (A4) in the bass, and a half note (G4) and a quarter note (A4) in the treble.

white as snow. The

Detailed description: This system contains measures 7 and 8. The vocal line continues with a quarter note (C5), a quarter note (D5), and a quarter note (E5). The piano accompaniment continues with a half note (G4) and a quarter note (A4) in the bass, and a half note (G4) and a quarter note (A4) in the treble.

*p*

wet leaves stir; the dim trees dream a - gain Of van - ished

*f* *dim.*

Springs:- Out in the night, out in the slow, soft

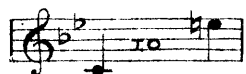
*mf* *dim.*

*ten.* *Tranquillo*

rain, My lost youth sings.

*dim.* *pp*

Nº 1 IN B<sup>b</sup>



Nº 2 IN C



For Nora Panfili.

# MEDITATION.

ERNEST DOWSON.

CYRIL SCOTT.

*Andante semplice.*

VOICE. *p*

They are not long, the

PIANO. *p*

*delicately*

weep - ing and the laugh - ter, Love and de - sire and

hate, *mp* I think they have no