

Suite B-Dur (Nr. 2)

Ouverture

J. A. Reichenauer

[Adagio]

Viola

6

11

18

26

34

42

58

66

74

82

90

98

1. 2. *Presto* $\frac{2}{4}$

108

115

121

129

143

finis

152

[Presto] $\frac{2}{4}$

[Bourrée]

[Allegro]

8

15

finis

26

32

da capo

Aria

Andante

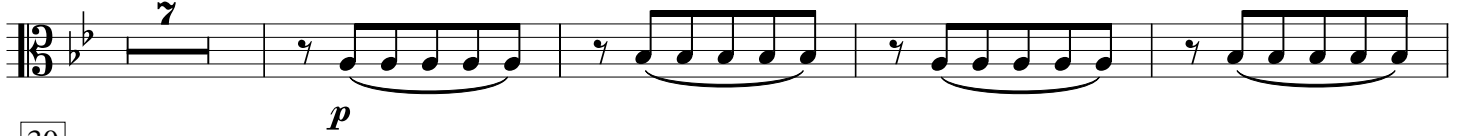
7



13



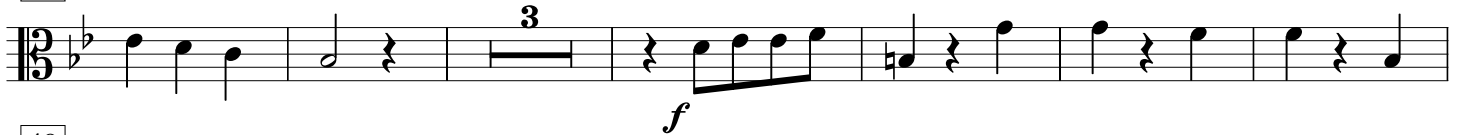
19



30



40



49



55

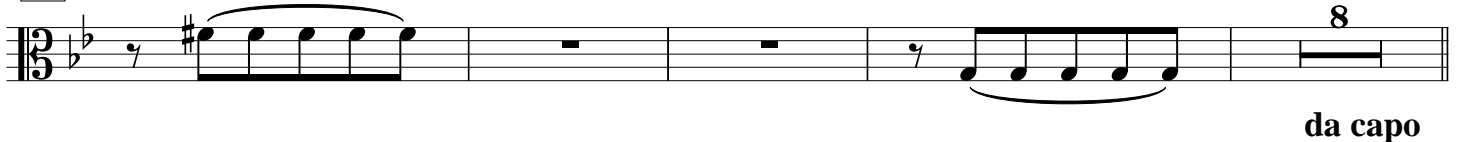


62

finis



68



da capo

Gavotte



8



15

25

35

Menuet

9

finis

18

27

da capo

Duetto

8

Menuet da capo